



UK Office

Everest Biotech Ltd

Cherwell Innovation Centre
77 Heyford Park
Upper Heyford
Oxfordshire
OX25 5HD
UK

Enquiries:

info@everestbiotech.com

Sales:

sales@everestbiotech.com

Tech support:

support@everestbiotech.com

Tel: +44 (0)1869 238326

Fax: +44 (0)1869 238327

US Office

Everest Biotech c/o Abcore

405 Maple Street, Suite A106
Ramona,
CA 92065
USA

Inquiries:

info@everestbiotech.com

Sales:

usasales@everestbiotech.com

Tech support:

support@everestbiotech.com

Tel: 888-320-4628 (toll-free)

Fax: 888-841-9041

www.everestbiotech.com

**Research Use Only. Not for
diagnostic or therapeutic use.**

EB05248 - Goat Anti-PLRG1 Antibody

Size: 100µg specific antibody in 200µl



Target Protein

Principal Names: PLRG1, pleiotropic regulator 1 (PRL1 homolog, Arabidopsis), PRL1, MGC110980, pleiotropic regulator 1 (PRL1, Arabidopsis homolog), pleiotropic regulator 1 (PRL1 homolog, Arabidopsis), pleiotropic regulator 1 (PRL1, Arabidopsis homolog)

Official Symbol: PLRG1

Accession Number(s): NP_002660.1; NP_001188493.1

Human GeneID(s): [5356](#)

Non-Human GeneID(s): 60376 (rat)

Important Comments: This antibody is expected to recognise isoform 1 (NP_002660.1) and isoform 2 (NP_001188493.1).

Immunogen

Peptide with sequence C-PVSWKPEIIKKRF, from the C Terminus of the protein sequence according to NP_002660.1; NP_001188493.1.

Please note the [peptide](#) is available for sale.

Purification and Storage

Purified from goat serum by ammonium sulphate precipitation followed by antigen affinity chromatography using the immunizing peptide.

Supplied at 0.5 mg/ml in Tris saline, 0.02% sodium azide, pH7.3 with 0.5% bovine serum albumin.

Aliquot and store at -20°C. Minimize freezing and thawing.

Applications Tested

Peptide ELISA: antibody detection limit dilution 1:16000.

Western blot: Approx 60kDa band observed in nuclear lysates of cell lines HEK293 and NIH3T3 (calculated MW of 57.2kDa according to Human NP_002660.1 and 56.9kDa according to Mouse NP_058064.2). Recommended concentration: 0.1-0.3µg/ml. Primary incubation was 1 hour.

IHC: Paraffin embedded Human Prostate. Recommended concentration: 5µg/ml.

Species Reactivity

Tested: Human, Mouse

Expected from sequence similarity: Human, Mouse, Rat, Dog, Pig, Cow

Specific Reference

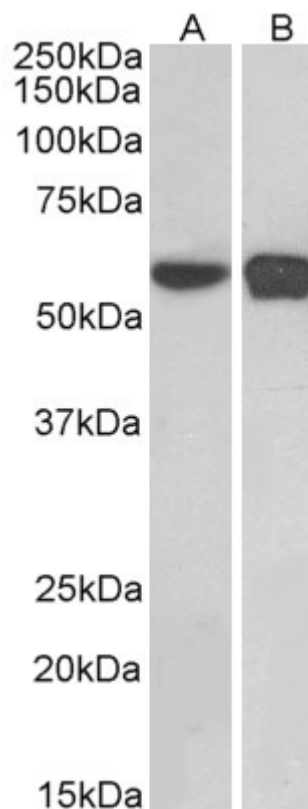
This antibody (previous batch) has been successfully used in WB and ICC on Human:

Llères D, Denegri M, Biggiogera M, Ajuh P, Lamond AI.

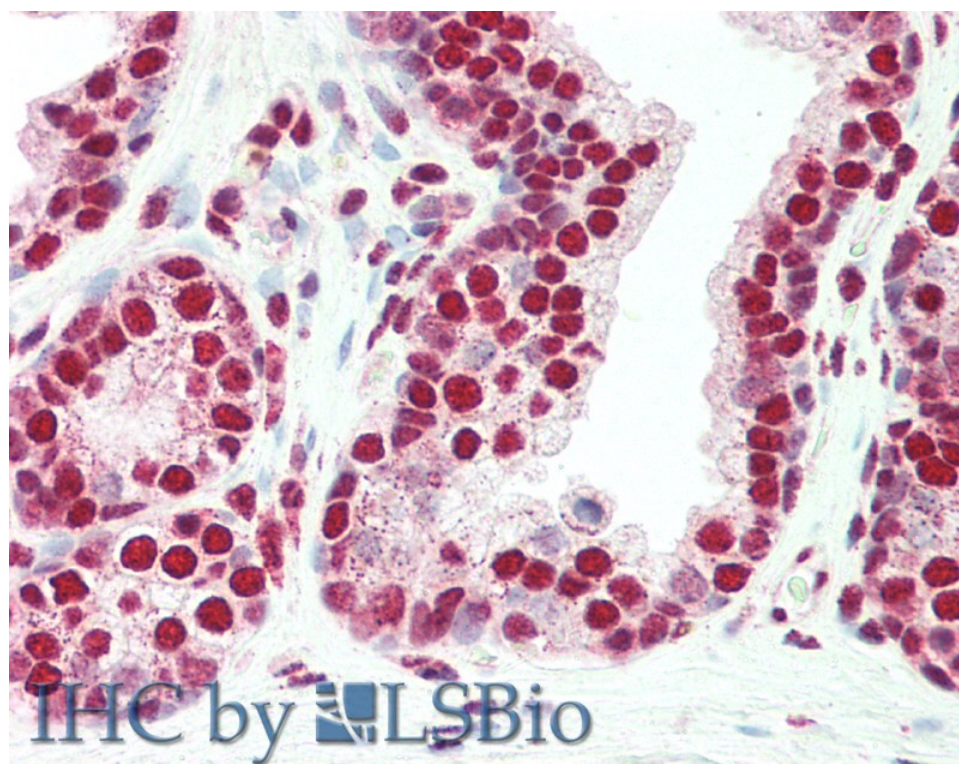
Direct interaction between hnRNP-M and CDC5L/PLRG1 proteins affects alternative splice site choice.

EMBO Rep. 2010 Jun;11(6):445-51.

PMID: 20467437



EB05248 (0.1µg/ml) staining of HEK293 (A) and NIH3T3 (B) nuclear cell lysates (35µg protein in RIPA buffer).
Detected by chemiluminescence.



EB05248 (5µg/ml) staining of paraffin embedded Human Prostate. Steamed antigen retrieval with citrate buffer pH 6, AP-staining.