

UK Office

Everest Biotech Ltd

Cherwell Innovation Centre
77 Heyford Park
Upper Heyford
Oxfordshire
OX25 5HD
UK

Enquiries:

info@everestbiotech.com

Sales:

sales@everestbiotech.com

Tech support:

support@everestbiotech.com

Tel: +44 (0)1869 238326

www.everestbiotech.com

**Research Use Only. Not for
diagnostic or therapeutic use.**

EB08993 - Goat Anti-PMSCl1 Antibody

Size: 100µg specific antibody in 200µl



Target Protein

Principal Names: EXOSC9, exosome component 9, PM/Scl-75, PMSCL1, RRP45, Rrp45p, p5, p6, P75 polymyositis-scleroderma overlap syndrome associated autoantigen, PMSCL autoantigen, 75kD, autoantigen PM/Scl 1, polymyositis/scleroderma autoantigen 1 (75kD), polymyositis/scleroderma autoantigen 1, 75kDa

Official Symbol: EXOSC9

Accession Number(s): NP_001029366.1; NP_005024.2

Human GeneID(s): [5393](#)

Important Comments: This antibody is expected to recognize both reported isoforms (NP_001029366.1; NP_005024.2).

Immunogen

Peptide with sequence C-RTQTTSKQEKAP, from the C Terminus of the protein sequence according to NP_001029366.1; NP_005024.2.

Please note the [peptide](#) is available for sale.

Purification and Storage

Purified from goat serum by ammonium sulphate precipitation followed by antigen affinity chromatography using the immunizing peptide.

Supplied at 0.5 mg/ml in Tris saline, 0.02% sodium azide, pH7.3 with 0.5% bovine serum albumin.

Aliquot and store at -20°C. Minimize freezing and thawing.

Applications Tested

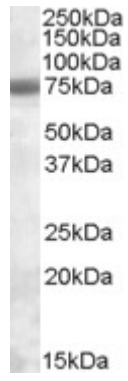
Peptide ELISA: antibody detection limit dilution 1:64000.

Western blot: Approx. 75kDa band observed in lysates of cell line Jurkat (calculated MW of 50.8kDa according to NP_001029366.1). The observed molecular weight corresponds to earlier findings in literature with different antibodies (Alderuccio, J Exp Med. 1991 Apr 1;173(4):941-52; PMID: 2007859). Recommended concentration: 0.3-1µg/ml.

Species Reactivity

Tested: Human

Expected from sequence similarity: Human



EB08993 (0.3 μ g/ml) staining of Jurkat lysate (35 μ g protein in RIPA buffer). Primary incubation was 1 hour.
Detected by chemiluminescence.