



UK Office

Everest Biotech Ltd

Cherwell Innovation Centre
77 Heyford Park
Upper Heyford
Oxfordshire
OX25 5HD
UK

Enquiries:

info@everestbiotech.com

Sales:

sales@everestbiotech.com

Tech support:

support@everestbiotech.com

Tel: +44 (0)1869 238326

www.everestbiotech.com

**Research Use Only. Not for
diagnostic or therapeutic use.**

EB07640 - Goat Anti-PNPLA2 / ATGL Antibody

Size: 100µg specific antibody in 200µl



Target Protein

Principal Names: PNPLA2, ATGL, patatin-like phospholipase domain containing 2, 1110001C14Rik, DKFZp667M109, FP17548, TTS-2.2, adipose triglyceride lipase, desnutrin, transport-secretion protein 2.2, triglyceride hydrolase

Official Symbol: PNPLA2

Accession Number(s): NP_065109.1

Human GeneID(s): [57104](#)

Immunogen

Peptide with sequence C-PARPHGPEDKDQ, from the internal region of the protein sequence according to NP_065109.1.

Please note the [peptide](#) is available for sale.

Purification and Storage

Purified from goat serum by ammonium sulphate precipitation followed by antigen affinity chromatography using the immunizing peptide.

Supplied at 0.5 mg/ml in Tris saline, 0.02% sodium azide, pH7.3 with 0.5% bovine serum albumin.

Aliquot and store at -20°C. Minimize freezing and thawing.

Applications Tested

Peptide ELISA: antibody detection limit dilution 1:8000.

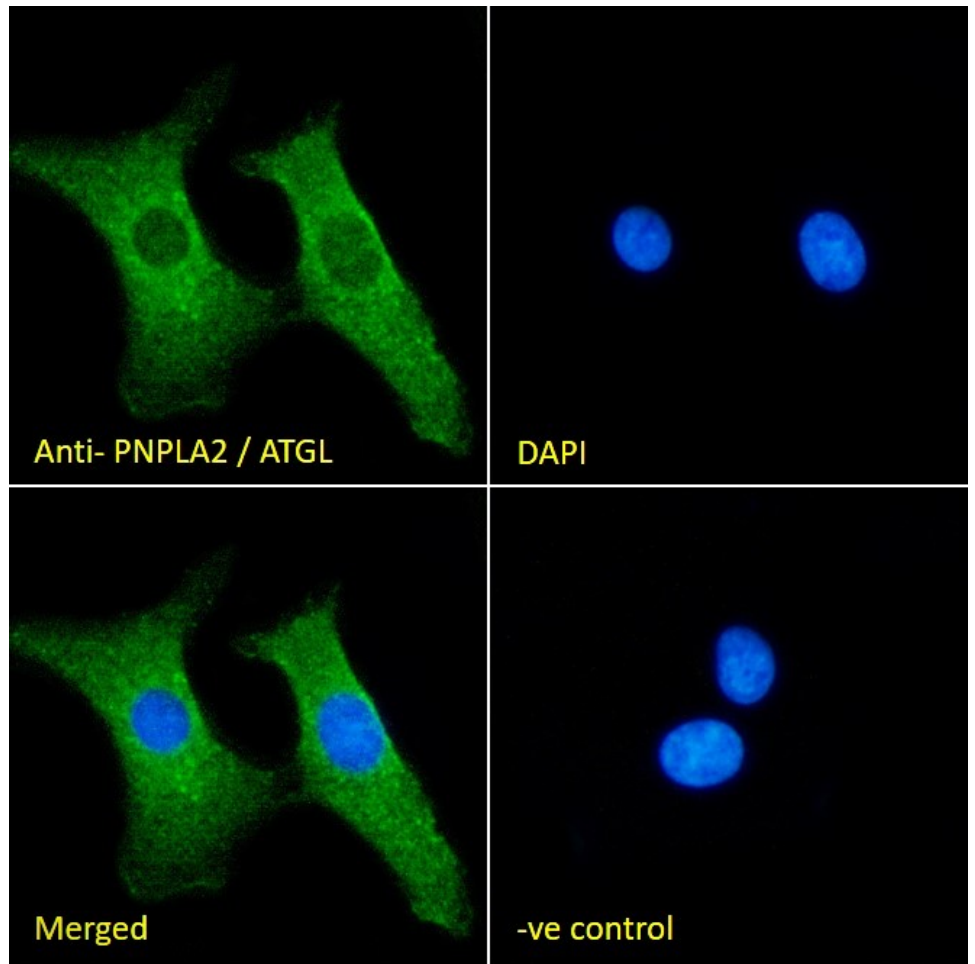
Immunofluorescence: Strong expression of the protein seen in the cytoplasm and lipid droplets of HEK293 cells. Recommended concentration: 10µg/ml.

Flow Cytometry: Flow cytometric analysis of HEK293 cells. Recommended concentration: 10ug/ml.

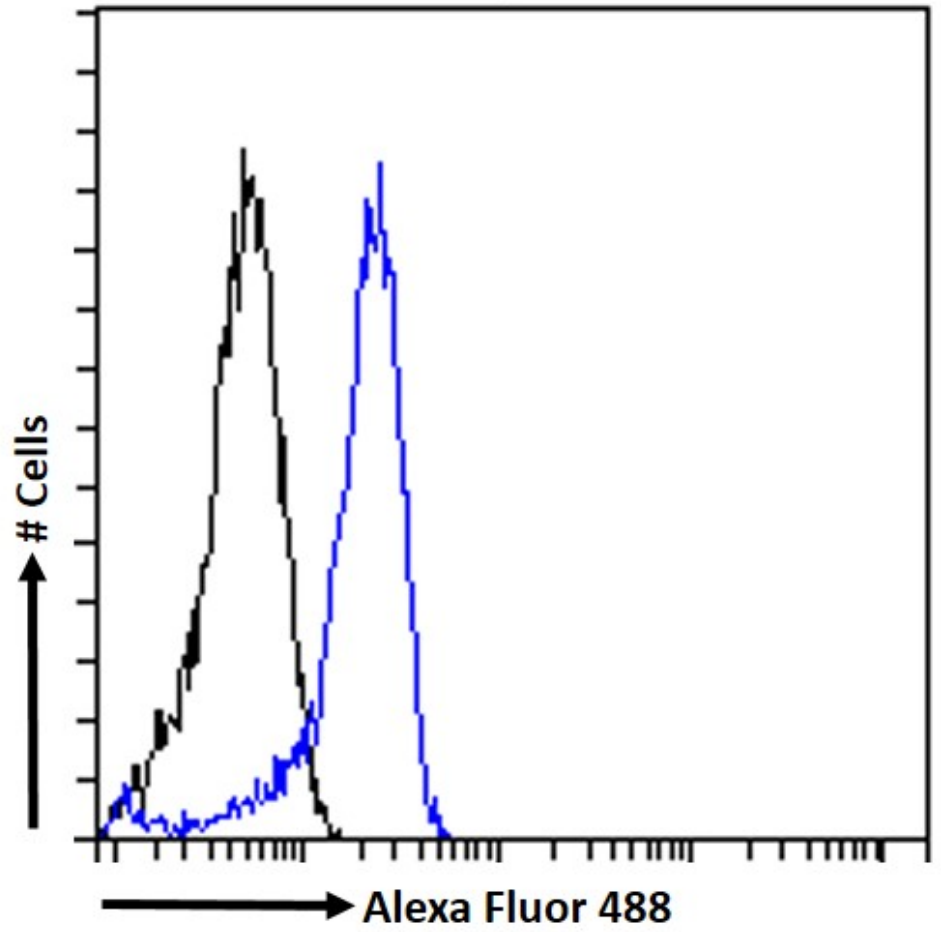
Species Reactivity

Tested: Human

Expected from sequence similarity: Human



EB07640 Immunofluorescence analysis of paraformaldehyde fixed HEK293 cells, permeabilized with 0.15% Triton. Primary incubation 1hr (10ug/ml) followed by Alexa Fluor 488 secondary antibody (2ug/ml), showing lipid droplet and cytoplasmic staining. The nuclear stain is DAPI (blue). Negative control: Unimmunized goat IgG (10ug/ml) followed by Alexa Fluor 488 secondary antibody (2ug/ml).



EB07640 Flow cytometric analysis of paraformaldehyde fixed HEK293 cells (blue line), permeabilized with 0.5% Triton. Primary incubation 1hr (10ug/ml) followed by Alexa Fluor 488 secondary antibody (1ug/ml). IgG control: Unimmunized goat IgG (black line) followed by Alexa Fluor 488 secondary antibody.