



International Office

Everest Biotech Ltd

Vector Laboratories, Inc.
6737 Mowry Ave
Newark, CA 94560
United States

Customer Service:

customerservice@vectorlabs.com

Technical Service:

technical@vectorlabs.com

Tel: +1 (800) 227-6666

www.everestbiotech.com

**Research Use Only. Not for
diagnostic or therapeutic use.**

EB12012 - Goat Anti-polo-like kinase 3 (aa320-333) Antibody

Size: 100µg specific antibody in 200µl



Target Protein

Principal Names: PLK3, polo-like kinase 3, CNK, FNK, PRK, FGF-inducible kinase, PLK-3, cytokine-inducible kinase, cytokine-inducible serine/threonine-protein kinase, proliferation-related kinase, serine/threonine-protein kinase PLK3

Official Symbol: PLK3

Accession Number(s): NP_004064.2

Human GeneID(s): [1263](#)

Immunogen

Peptide with sequence PDRLPISSCVTPD, from the internal region of the protein sequence according to NP_004064.2.

Please note the [peptide](#) is available for sale.

Purification and Storage

Purified from goat serum by ammonium sulphate precipitation followed by antigen affinity chromatography using the immunizing peptide.

Supplied at 0.5 mg/ml in Tris saline, 0.02% sodium azide, pH7.3 with 0.5% bovine serum albumin.

Aliquot and store at -20°C. Minimize freezing and thawing.

Applications Tested

Peptide ELISA: antibody detection limit dilution 1:128000.

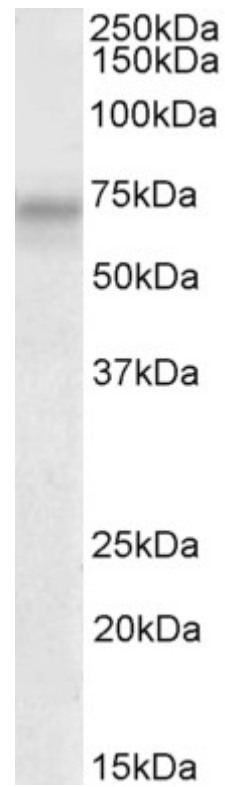
Western blot: Approx 70kDa band observed in lysates of cell line HeLa (calculated MW of 71.6kDa according to NP_004064.2). Recommended concentration: 1-3µg/ml. Primary incubation 1 hour at room temperature.

IHC: In paraffin embedded Human Kidney shows vesicular staining in the cytoplasm of collective tubules. Recommended concentration, 5-10µg/ml.

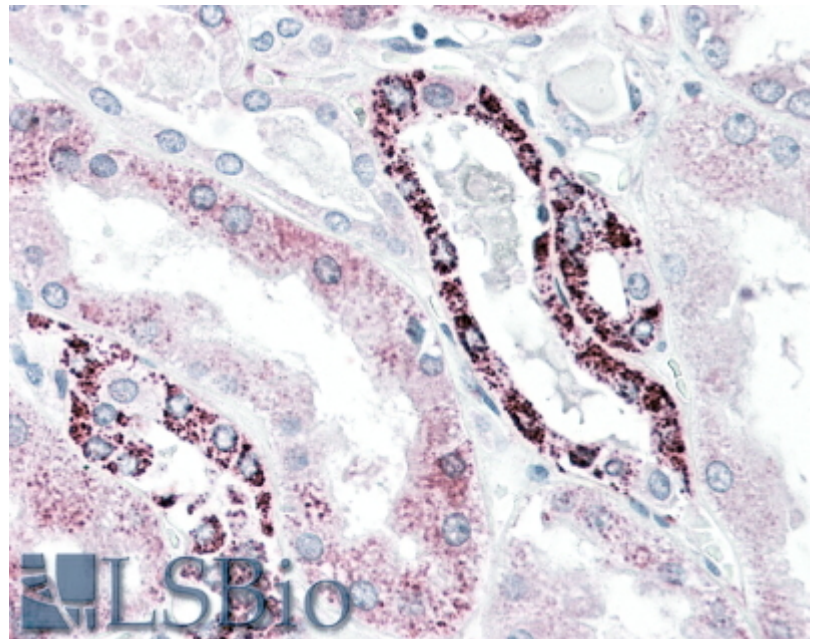
Species Reactivity

Tested: Human

Expected from sequence similarity: Human



EB12012 (2 μ g/ml) staining of HeLa lysate (35 μ g protein in RIPA buffer). Detected by chemiluminescence.



EB12012 (5 μ g/ml) staining of paraffin embedded Human Kidney. Steamed antigen retrieval with citrate buffer pH 6, AP-staining.