



## UK Office

### Everest Biotech Ltd

Cherwell Innovation Centre  
77 Heyford Park  
Upper Heyford  
Oxfordshire  
OX25 5HD  
UK

Enquiries:

[info@everestbiotech.com](mailto:info@everestbiotech.com)

Sales:

[sales@everestbiotech.com](mailto:sales@everestbiotech.com)

Tech support:

[support@everestbiotech.com](mailto:support@everestbiotech.com)

Tel: +44 (0)1869 238326

Fax: +44 (0)1869 238327

## US Office

### Everest Biotech c/o Abcore

405 Maple Street, Suite A106  
Ramona,  
CA 92065  
USA

Inquiries:

[info@everestbiotech.com](mailto:info@everestbiotech.com)

Sales:

[usasales@everestbiotech.com](mailto:usasales@everestbiotech.com)

Tech support:

[support@everestbiotech.com](mailto:support@everestbiotech.com)

Tel: 888-320-4628 (toll-free)

Fax: 888-841-9041

[www.everestbiotech.com](http://www.everestbiotech.com)

**Research Use Only. Not for  
diagnostic or therapeutic use.**

## EB12012 - Goat Anti-polo-like kinase 3 (aa320-333) Antibody

Size: 100µg specific antibody in 200µl



### Target Protein

**Principal Names:** PLK3, polo-like kinase 3, CNK, FNK, PRK, FGF-inducible kinase, PLK-3, cytokine-inducible kinase, cytokine-inducible serine/threonine-protein kinase, proliferation-related kinase, serine/threonine-protein kinase PLK3

**Official Symbol:** PLK3

**Accession Number(s):** NP\_004064.2

**Human GeneID(s):** [1263](#)

### Immunogen

Peptide with sequence PDRLPISSCVTVPD, from the internal region of the protein sequence according to NP\_004064.2.

Please note the [peptide](#) is available for sale.

### Purification and Storage

Purified from goat serum by ammonium sulphate precipitation followed by antigen affinity chromatography using the immunizing peptide.

Supplied at 0.5 mg/ml in Tris saline, 0.02% sodium azide, pH7.3 with 0.5% bovine serum albumin.

Aliquot and store at -20°C. Minimize freezing and thawing.

### Applications Tested

**Peptide ELISA:** antibody detection limit dilution 1:128000.

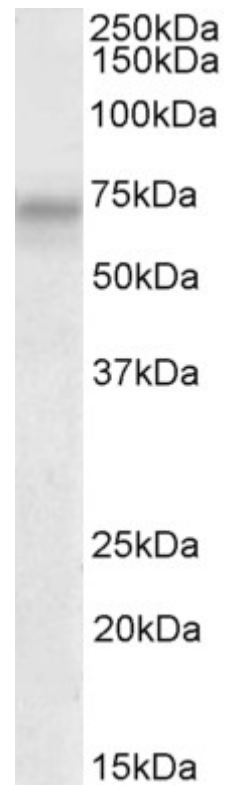
**Western blot:** Approx 70kDa band observed in lysates of cell line HeLa (calculated MW of 71.6kDa according to NP\_004064.2). Recommended concentration: 1-3µg/ml. Primary incubation 1 hour at room temperature.

**IHC:** In paraffin embedded Human Kidney shows vesicular staining in the cytoplasm of collective tubules. Recommended concentration, 5-10µg/ml.

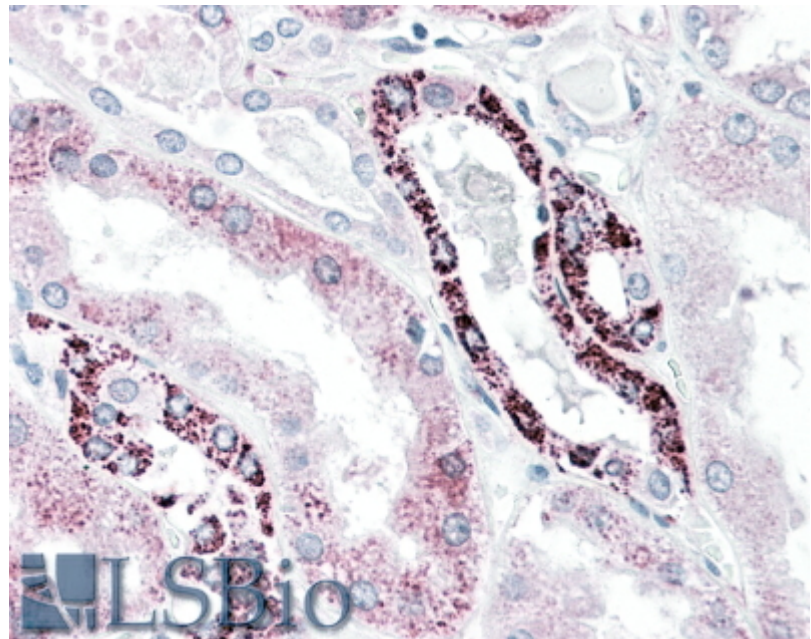
### Species Reactivity

**Tested:** Human

**Expected from sequence similarity:** Human



EB12012 (2 $\mu$ g/ml) staining of HeLa lysate (35 $\mu$ g protein in RIPA buffer). Detected by chemiluminescence.



EB12012 (5 $\mu$ g/ml) staining of paraffin embedded Human Kidney. Steamed antigen retrieval with citrate buffer pH 6, AP-staining.