

UK Office

Everest Biotech Ltd

Cherwell Innovation Centre
77 Heyford Park
Upper Heyford
Oxfordshire
OX25 5HD
UK

Enquiries:

info@everestbiotech.com

Sales:

sales@everestbiotech.com

Tech support:

support@everestbiotech.com

Tel: +44 (0)1869 238326

www.everestbiotech.com

**Research Use Only. Not for
diagnostic or therapeutic use.**

EB09836 - Goat Anti-PON2 Antibody

Size: 100µg specific antibody in 200µl



Target Protein

Principal Names: A-esterase 2, aromatic esterase 2, paraoxonase 2, paraoxonase nirs, serum arylalkylphosphatase 2, serum paraoxonase/arylesterase 2, PON2

Official Symbol: PON2

Accession Number(s): NP_000296.2; NP_001018171.1

Human GeneID(s): [5445](#)

Non-Human GeneID(s): 330260 (mouse), 296851 (rat)

Important Comments: This antibody is expected to recognize isoforms 1 and 2 (NP_000296.2; NP_001018171.1).

Immunogen

Peptide with sequence C-ERLLALRNRLKAS, from the internal region of the protein sequence according to NP_000296.2; NP_001018171.1.

Please note the [peptide](#) is available for sale.

Purification and Storage

Purified from goat serum by ammonium sulphate precipitation followed by antigen affinity chromatography using the immunizing peptide.

Supplied at 0.5 mg/ml in Tris saline, 0.02% sodium azide, pH7.3 with 0.5% bovine serum albumin.

Aliquot and store at -20°C. Minimize freezing and thawing.

Applications Tested

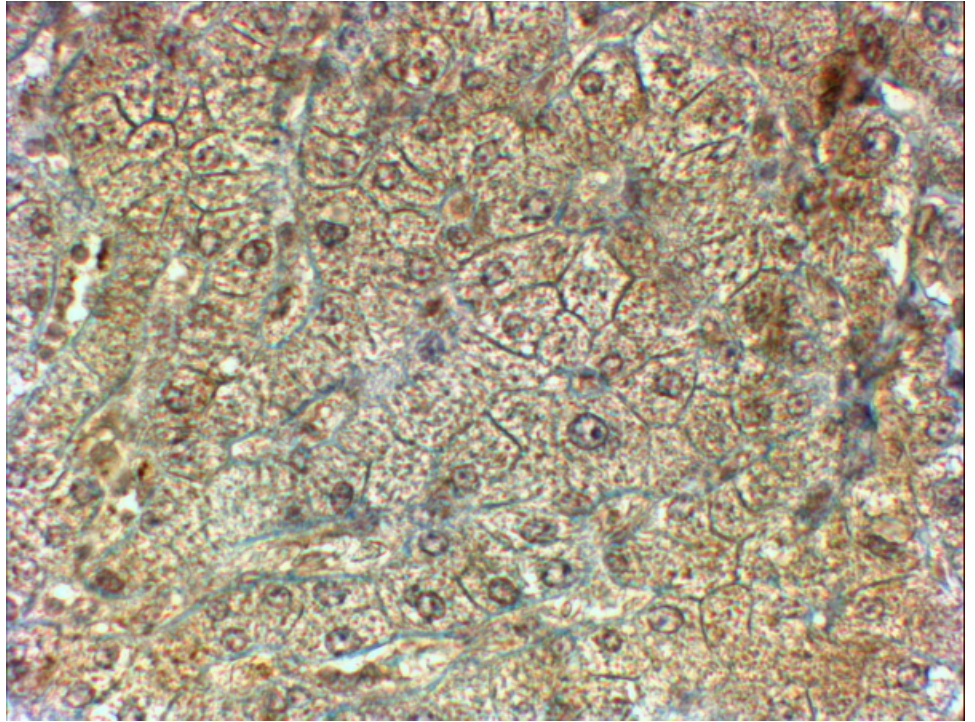
Peptide ELISA: antibody detection limit dilution 1:4000.

IHC: In paraffin embedded Human Liver shows membranous staining surrounding the hepatocytes and some background. Recommended concentration, 2-4µg/ml.

Species Reactivity

Tested: Human

Expected from sequence similarity: Human, Mouse, Rat, Pig, Dog, Cow



EB09836 (2 μ g/ml) staining of paraffin embedded Human Liver. Steamed antigen retrieval with citrate buffer pH 6, HRP-staining.