



International Office

Everest Biotech Ltd

Vector Laboratories, Inc.
6737 Mowry Ave
Newark, CA 94560
United States

Customer Service:

customerservice@vectorlabs.com

Technical Service:

technical@vectorlabs.com

Tel: +1 (800) 227-6666

www.everestbiotech.com

**Research Use Only. Not for
diagnostic or therapeutic use.**

EB09835 - Goat Anti-PON2 Antibody

Size: 100µg specific antibody in 200µl



Target Protein

Principal Names: A-esterase 2, aromatic esterase 2, paraoxonase 2, paraoxonase nirs, serum arylalkylphosphatase 2, serum paraoxonase/arylesterase 2, PON2

Official Symbol: PON2

Accession Number(s): NP_000296.2; NP_001018171.1

Human GeneID(s): [5445](#)

Non-Human GeneID(s): 296851 (rat)

Important Comments: This antibody is expected to recognize isoforms 1 and 2 (NP_000296.2; NP_001018171.1).

Immunogen

Peptide with sequence C-EKPRARELRIS, from the internal region of the protein sequence according to NP_000296.2; NP_001018171.1.

Please note the [peptide](#) is available for sale.

Purification and Storage

Purified from goat serum by ammonium sulphate precipitation followed by antigen affinity chromatography using the immunizing peptide.

Supplied at 0.5 mg/ml in Tris saline, 0.02% sodium azide, pH7.3 with 0.5% bovine serum albumin.

Aliquot and store at -20°C. Minimize freezing and thawing.

Applications Tested

Peptide ELISA: antibody detection limit dilution 1:32000.

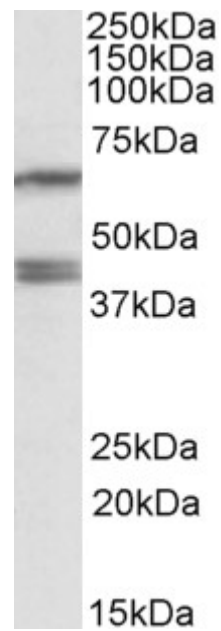
Western blot: Approx 40kDa double band observed in lysates of HepG2 (calculated MW of 39.4kDa according to NP_000296.2 and of 38.0kDa according to NP_001018171.1). Recommended concentration: 0.2-0.6µg/ml. Primary incubation was 1 hour. An additional band of unknown identity was also consistently observed at 60kDa. This band was successfully blocked by incubation with the immunizing peptide.

IHC: Paraffin embedded Human Placenta. Recommended concentration: 3.75µg/ml.

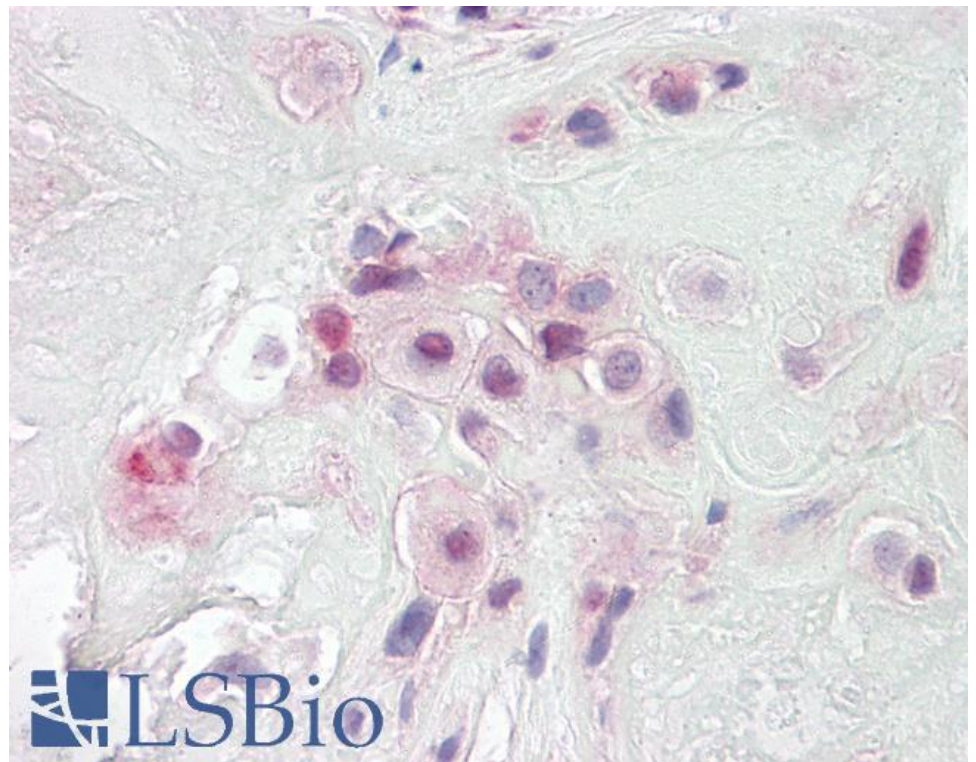
Species Reactivity

Tested: Human

Expected from sequence similarity: Human, Rat, Pig, Dog



EB09835 (0.2 μ g/ml) staining of HepG2 lysate (35 μ g protein in RIPA buffer). Detected by chemiluminescence.



EB09835 (3.75 μ g/ml) staining of paraffin embedded Human Placenta. Steamed antigen retrieval with citrate buffer pH 6, AP-staining.