



International Office

Everest Biotech Ltd

Vector Laboratories, Inc.
6737 Mowry Ave
Newark, CA 94560
United States

Customer Service:

customerservice@vectorlabs.com

Technical Service:

technical@vectorlabs.com

Tel: +1 (800) 227-6666

www.everestbiotech.com

**Research Use Only. Not for
diagnostic or therapeutic use.**

EB10018 - Goat Anti-POU2AF1 Antibody

Size: 100µg specific antibody in 200µl



Target Protein

Principal Names: BOB1, OBF1, OBF-1, OCAB, POU class 2 associating factor 1, POU domain, class 2, associating factor 1, POU2AF1

Official Symbol: POU2AF1

Accession Number(s): NP_006226.2

Human GeneID(s): [5450](#)

Immunogen

Peptide with sequence C-DSDAYALNHTLSVE, from the C Terminus of the protein sequence according to NP_006226.2.

Please note the [peptide](#) is available for sale.

Purification and Storage

Purified from goat serum by ammonium sulphate precipitation followed by antigen affinity chromatography using the immunizing peptide.

Supplied at 0.5 mg/ml in Tris saline, 0.02% sodium azide, pH7.3 with 0.5% bovine serum albumin.

Aliquot and store at -20°C. Minimize freezing and thawing.

Applications Tested

Peptide ELISA: antibody detection limit dilution 1:8000.

Western blot: In transfected HEK293 transiently expressing full-length Human POU2AF1 (myc and DYKDDDDK tagged), a band of approx. 38kDa was observed. No bands were observed in mock-transfected HEK293 and the same band was observed using anti-DYKDDDDK tag antibody. Recommended concentration, 1-2µg/ml.

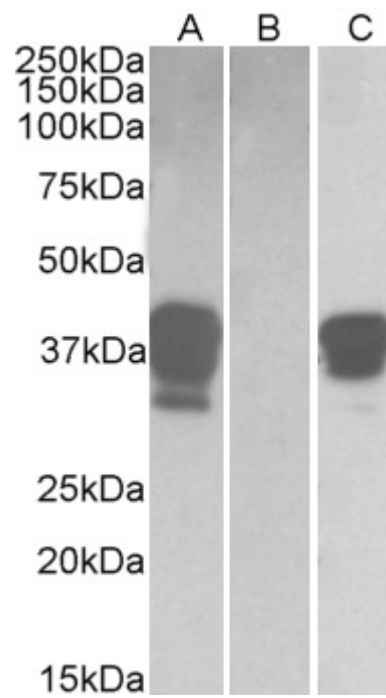
IHC: In paraffin embedded Human Spleen shows nuclear staining in the germinal center with stronger nucleoli staining in some of the B cells. Recommended concentration, 3-5µg/ml.

Purchase the +ve control! The transfected lysate used to QC this product is available for sale. Please email sales@everestbiotech.com to request datasheet, pricing and delivery information.

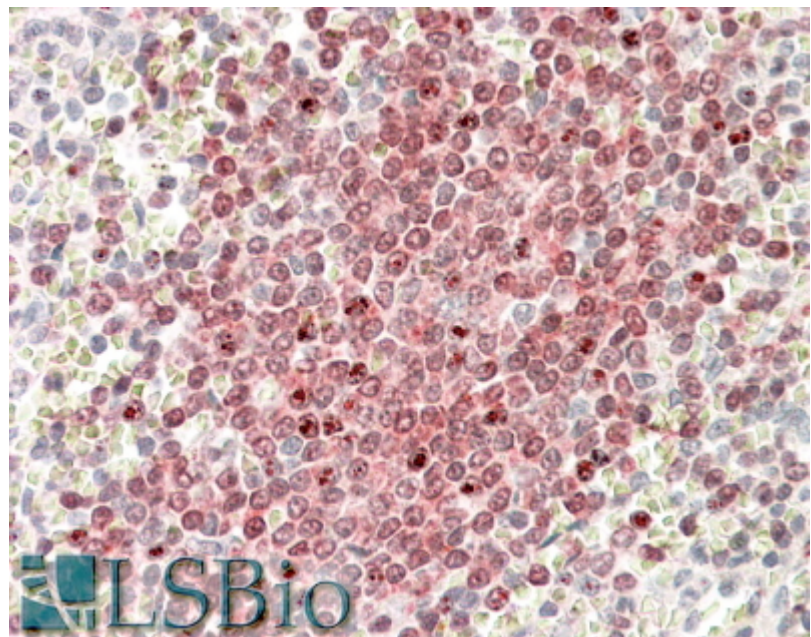
Species Reactivity

Tested: Human

Expected from sequence similarity: Human, Dog, Cow



HEK293 lysate (10ug protein in RIPA buffer) overexpressing Human POU2AF1 with DYKDDDDK tag probed with EB10018(1ug/ml) in Lane A and probed with anti- DYKDDDDK Tag (1/3000) in lane C. Mock-transfected HEK293 probed with EB10018(1mg/ml) in Lane B. Primary incubations were for 1 hour. Detected by chemiluminescence.



In paraffin embedded Human Spleen shows nuclear staining in the germinal center with stronger nucleoli staining in some of the B cells. Recommended concentration, 3-5µg/ml.