



International Office

Everest Biotech Ltd

Vector Laboratories, Inc.
6737 Mowry Ave
Newark, CA 94560
United States

Customer Service:

customerservice@vectorlabs.com

Technical Service:

technical@vectorlabs.com

Tel: +1 (800) 227-6666

www.everestbiotech.com

**Research Use Only. Not for
diagnostic or therapeutic use.**

EB10024 - Goat Anti-POU2F3 Antibody

Size: 100µg specific antibody in 200µl



Target Protein

Principal Names: Epoc-1, FLJ40063, MGC126698, OCT11, PLA-1, POU class 2 homeobox 3, POU domain, class 2, transcription factor 3, POU transcription factor, Skn-1a, POU2F3

Official Symbol: POU2F3

Accession Number(s): NP_055167.2

Human GeneID(s): [25833](#)

Immunogen

Peptide with sequence C-EPHLEASQHLPVPKH, from the internal region of the protein sequence according to NP_055167.2.

Please note the [peptide](#) is available for sale.

Purification and Storage

Purified from goat serum by ammonium sulphate precipitation followed by antigen affinity chromatography using the immunizing peptide.

Supplied at 0.5 mg/ml in Tris saline, 0.02% sodium azide, pH7.3 with 0.5% bovine serum albumin.

Aliquot and store at -20°C. Minimize freezing and thawing.

Applications Tested

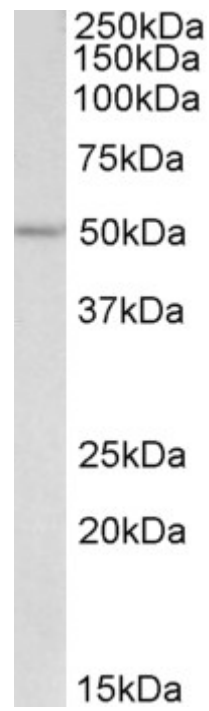
Peptide ELISA: antibody detection limit dilution 1:32000.

Western blot: Approx 50kDa band observed in lysates of cell lines HEK293 and HepG2 (calculated MW of 47.4kDa according to NP_055167.2). Recommended concentration: 1-3µg/ml.

Species Reactivity

Tested: Human

Expected from sequence similarity: Human, Rat, Dog, Cow



EB10024 (2µg/ml) staining of HEK293 lysate (35µg protein in RIPA buffer). Primary incubation was 1 hour.
Detected by chemiluminescence.