



## UK Office

### Everest Biotech Ltd

Cherwell Innovation Centre  
77 Heyford Park  
Upper Heyford  
Oxfordshire  
OX25 5HD  
UK

Enquiries:

[info@everestbiotech.com](mailto:info@everestbiotech.com)

Sales:

[sales@everestbiotech.com](mailto:sales@everestbiotech.com)

Tech support:

[support@everestbiotech.com](mailto:support@everestbiotech.com)

Tel: +44 (0)1869 238326

Fax: +44 (0)1869 238327

## US Office

### Everest Biotech c/o Abcore

405 Maple Street, Suite A106  
Ramona,  
CA 92065  
USA

Inquiries:

[info@everestbiotech.com](mailto:info@everestbiotech.com)

Sales:

[usasales@everestbiotech.com](mailto:usasales@everestbiotech.com)

Tech support:

[support@everestbiotech.com](mailto:support@everestbiotech.com)

Tel: 888-320-4628 (toll-free)

Fax: 888-841-9041

[www.everestbiotech.com](http://www.everestbiotech.com)

**Research Use Only. Not for  
diagnostic or therapeutic use.**

## EB10032 - Goat Anti-POU4F2 Antibody

Size: 100µg specific antibody in 200µl



### Target Protein

**Principal Names:** BRN3.2, BRN3B, Brn-3b, Brn3b POU domain transcription factor, POU class 4 homeobox 2, POU domain class 4 transcription factor 2, POU domain protein, POU domain, class 4, transcription factor 2, POU4F2

**Official Symbol:** POU4F2

**Accession Number(s):** NP\_004566.2

**Human GeneID(s):** [5458](#)

**Important Comments:** This antibody is not expected to cross-react to the similar POU4F3 (GeneID 5459)

### Immunogen

Peptide with sequence HGLPSHMGCMDSVD, from the internal region of the protein sequence according to NP\_004566.2.

Please note the [peptide](#) is available for sale.

### Purification and Storage

Purified from goat serum by ammonium sulphate precipitation followed by antigen affinity chromatography using the immunizing peptide.

Supplied at 0.5 mg/ml in Tris saline, 0.02% sodium azide, pH7.3 with 0.5% bovine serum albumin.

Aliquot and store at -20°C. Minimize freezing and thawing.

### Applications Tested

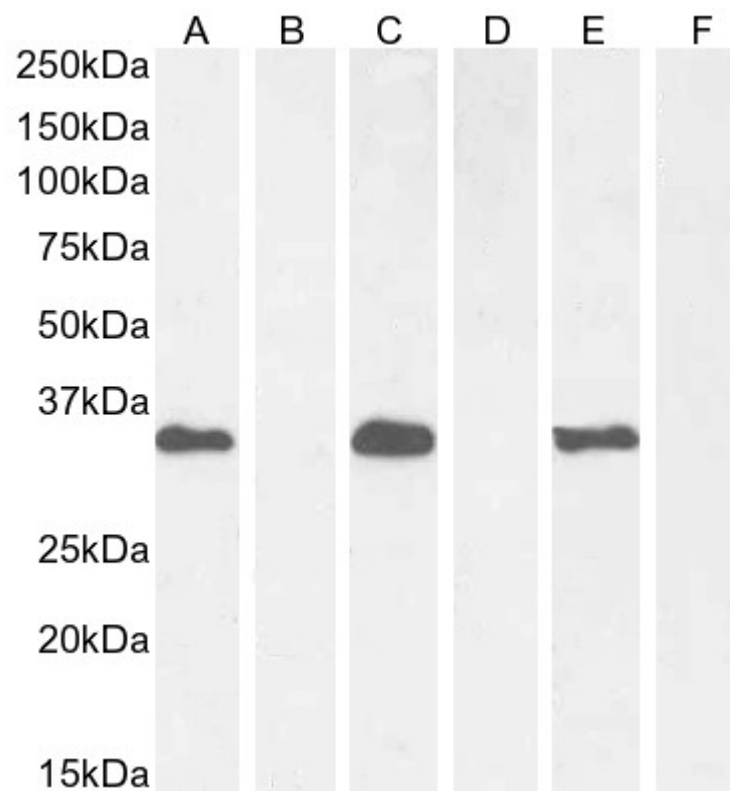
**Peptide ELISA:** antibody detection limit dilution 1:32000.

**Western blot:** Approx. 35kDa band observed in Human, Mouse and Rat Brain lysates (calculated MW of 43.1kDa according to Human NP\_004566.2, ). This band was successfully blocked by incubation with the immunizing peptide. Recommended concentration: 1-3µg/ml. Primary incubation 1 hour at room temperature.

### Species Reactivity

**Tested:** Human, Mouse, Rat

**Expected from sequence similarity:** Human, Mouse, Rat, Dog, Cow



EB10032 (1 $\mu$ g/ml) staining of Human Cerebellum (A) + peptide (B), Mouse Brain (C) + peptide (D), and Rat Brain (E) + peptide (F) lysate (35 $\mu$ g protein in RIPA buffer). Detected by chemiluminescence.