



## UK Office

### Everest Biotech Ltd

Cherwell Innovation Centre  
77 Heyford Park  
Upper Heyford  
Oxfordshire  
OX25 5HD  
UK

Enquiries:

[info@everestbiotech.com](mailto:info@everestbiotech.com)

Sales:

[sales@everestbiotech.com](mailto:sales@everestbiotech.com)

Tech support:

[support@everestbiotech.com](mailto:support@everestbiotech.com)

Tel: +44 (0)1869 238326

Fax: +44 (0)1869 238327

## US Office

### Everest Biotech c/o Abcore

405 Maple Street, Suite A106  
Ramona,  
CA 92065  
USA

Inquiries:

[info@everestbiotech.com](mailto:info@everestbiotech.com)

Sales:

[usasales@everestbiotech.com](mailto:usasales@everestbiotech.com)

Tech support:

[support@everestbiotech.com](mailto:support@everestbiotech.com)

Tel: 888-320-4628 (toll-free)

Fax: 888-841-9041

[www.everestbiotech.com](http://www.everestbiotech.com)

**Research Use Only. Not for  
diagnostic or therapeutic use.**

## EB06474 - Goat Anti-PPAR delta (Isoform 1) Antibody

Size: 100µg specific antibody in 200µl



### Target Protein

**Principal Names:** PPARD, FAAR, NUC1, NUCI, NR1C2, NUCII, PPARB, MGC3931, PPAR-beta, peroxisome proliferative activated receptor, delta, nuclear hormone receptor 1, peroxisome proliferator-activated receptor delta, OTTHUMP00000016256, OTTHUMP00000016257

**Official Symbol:** PPARD

**Accession Number(s):** NP\_006229.1

**Human GeneID(s):** [5467](#)

**Important Comments:** This antibody is expected to recognise isoform 1 (NP\_006229) of PPAR delta, but not isoform 2, a shorter protein (NP\_803184) with a different C-terminus.

### Immunogen

Peptide with sequence CHPLLQEIYKDMY, from the C Terminus of the protein sequence according to NP\_006229.1.

Please note the [peptide](#) is available for sale.

### Purification and Storage

Purified from goat serum by ammonium sulphate precipitation followed by antigen affinity chromatography using the immunizing peptide.

Supplied at 0.5 mg/ml in Tris saline, 0.02% sodium azide, pH7.3 with 0.5% bovine serum albumin.

Aliquot and store at -20°C. Minimize freezing and thawing.

### Applications Tested

**Peptide ELISA:** antibody detection limit dilution 1:32000.

**Western blot:** Approx 55kDa band observed in T cell line MOLT4 lysates (calculated MW of 49.9kDa according to NP\_006229.1). Recommended concentration: 1-3µg/ml. Primary incubation was 1 hour.

### Species Reactivity

**Tested:** Human

**Expected from sequence similarity:** Human, Mouse, Rat, Pig, Cow

### Specific Reference

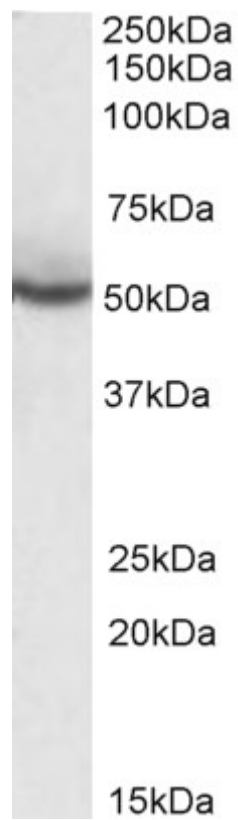
**This antibody (previous batch) has been successfully used in Western blot on Rat:**

Minamiyama Y, Takemura S, Kodai S, Shinkawa H, Tsukioka T, Ichikawa H, Naito Y, Yoshikawa T, Okada S

Iron restriction improves type 2 diabetes mellitus in Otsuka Long-Evans Tokushima fatty rats.

Am J Physiol Endocrinol Metab. 2010 Jun; 298(6):E1140-9.

PMID: 20215574



EB06474 (0.3 $\mu$ g/ml) staining of MOLT4 lysate (35 $\mu$ g protein in RIPA buffer). Detected by chemiluminescence.