

UK Office

Everest Biotech Ltd

Cherwell Innovation Centre
77 Heyford Park
Upper Heyford
Oxfordshire
OX25 5HD
UK

Enquiries:

info@everestbiotech.com

Sales:

sales@everestbiotech.com

Tech support:

support@everestbiotech.com

Tel: +44 (0)1869 238326

www.everestbiotech.com

**Research Use Only. Not for
diagnostic or therapeutic use.**

EB08233 - Goat Anti-PPP2R3A Antibody

Size: 100µg specific antibody in 200µl



Target Protein

Principal Names: PPP2R3A, protein phosphatase 2 (formerly 2A), regulatory subunit B\1\1, alpha, PPP2R3, PR130, PR72, PP2A, subunit B, B\1\1-PR72/PR130, PP2A, subunit B, B72/B130 isoforms, PP2A, subunit B, R3 isoform, Serine/threonine protein phosphatase 2A, 72/130 kDa regul

Official Symbol: PPP2R3A

Accession Number(s): NP_002709.2; NP_871626.1

Human GeneID(s): [5523](#)

Important Comments: This antibody is expected to recognise both reported isoforms (NP_002709.2; NP_871626.1).

Immunogen

Peptide with sequence C-QKDVENDGPEPSD, from the internal region of the protein sequence according to NP_002709.2; NP_871626.1.

Please note the [peptide](#) is available for sale.

Purification and Storage

Purified from goat serum by ammonium sulphate precipitation followed by antigen affinity chromatography using the immunizing peptide.

Supplied at 0.5 mg/ml in Tris saline, 0.02% sodium azide, pH7.3 with 0.5% bovine serum albumin.

Aliquot and store at -20°C. Minimize freezing and thawing.

Applications Tested

Peptide ELISA: antibody detection limit dilution 1:16000.

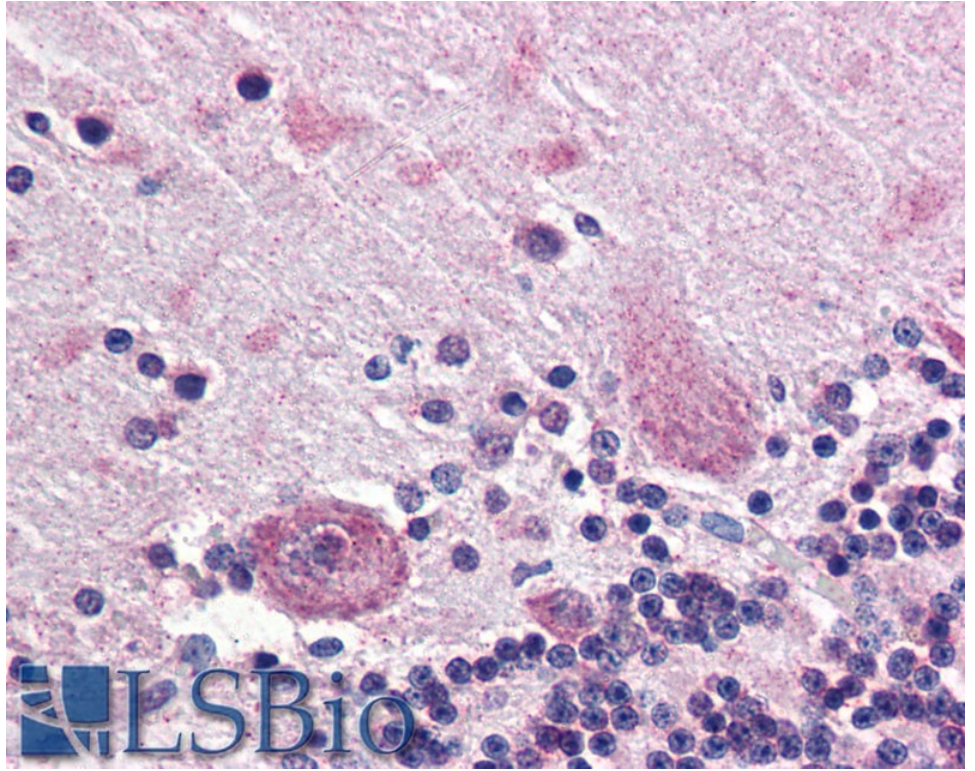
Western blot: Preliminary experiments gave an approx 80kDa band in Human Skeletal Muscle lysates after 1µg/ml antibody staining. Please note that currently we cannot find an explanation in the literature for the band we observe given the calculated size of 130kDa according to NP_002709.2 and of 61.1kDa according to NP_871626.1. The 80kDa band was successfully blocked by incubation with the immunizing peptide.

IHC: Paraffin embedded Human Brain (Cerebellum). Recommended concentration: 5µg/ml.

Species Reactivity

Tested: Human

Expected from sequence similarity: Human



EB08233 (5µg/ml) staining of paraffin embedded Human Cerebellum. Steamed antigen retrieval with citrate buffer pH 6, AP-staining.