

UK Office

Everest Biotech Ltd

Cherwell Innovation Centre
77 Heyford Park
Upper Heyford
Oxfordshire
OX25 5HD
UK

Enquiries:

info@everestbiotech.com

Sales:

sales@everestbiotech.com

Tech support:

support@everestbiotech.com

Tel: +44 (0)1869 238326

www.everestbiotech.com

**Research Use Only. Not for
diagnostic or therapeutic use.**

EB05234 - Goat Anti-PPP2R5A Antibody

Size: 100µg specific antibody in 200µl



Target Protein

Principal Names: PPP2R5A, protein phosphatase 2, regulatory subunit B (B56), alpha isoform, MGC131915, PP2A, B subunit, B1 alpha isoform, PP2A, B subunit, B56 alpha isoform, PP2A, B subunit, PR61 alpha isoform, PP2A, B subunit, R5 alpha isoform, serine/threonine protein phosphatase 2A, 56 kDa regulatory subunit, alpha isoform, protein phosphatase 2, regulatory subunit B1, alpha isoform, B56A, MGC131915, PR61A

Official Symbol: PPP2R5A

Accession Number(s): NP_006234.1

Human GeneID(s): [5525](#)

Immunogen

Peptide with sequence C-AYNMHSILSNTSAE, from the C Terminus of the protein sequence according to NP_006234.1.

Please note the [peptide](#) is available for sale.

Purification and Storage

Purified from goat serum by ammonium sulphate precipitation followed by antigen affinity chromatography using the immunizing peptide.

Supplied at 0.5 mg/ml in Tris saline, 0.02% sodium azide, pH7.3 with 0.5% bovine serum albumin.

Aliquot and store at -20°C. Minimize freezing and thawing.

Applications Tested

Peptide ELISA: antibody detection limit dilution 1:32000.

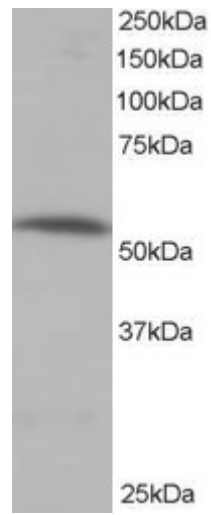
Western blot: Approx 55kDa band observed in human heart and skeletal muscle lysate (calculated MW of 56.2kDa according to NP_006234.1). Recommended for use at 0.5-2µg/ml.

IHC: Paraffin embedded Human Heart and Brain (Cortex). Recommended concentration: 5µg/ml.

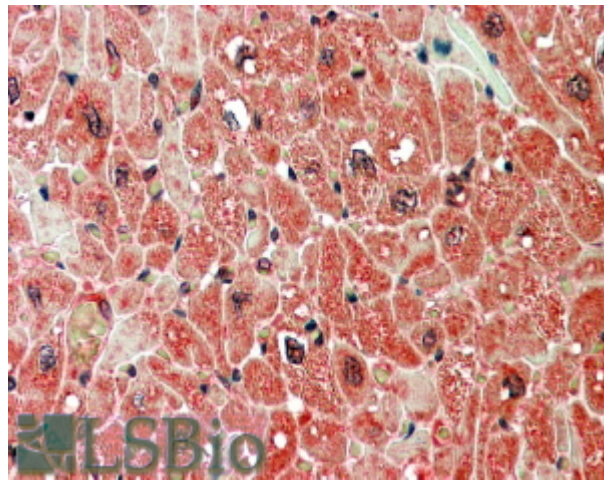
Species Reactivity

Tested: Human

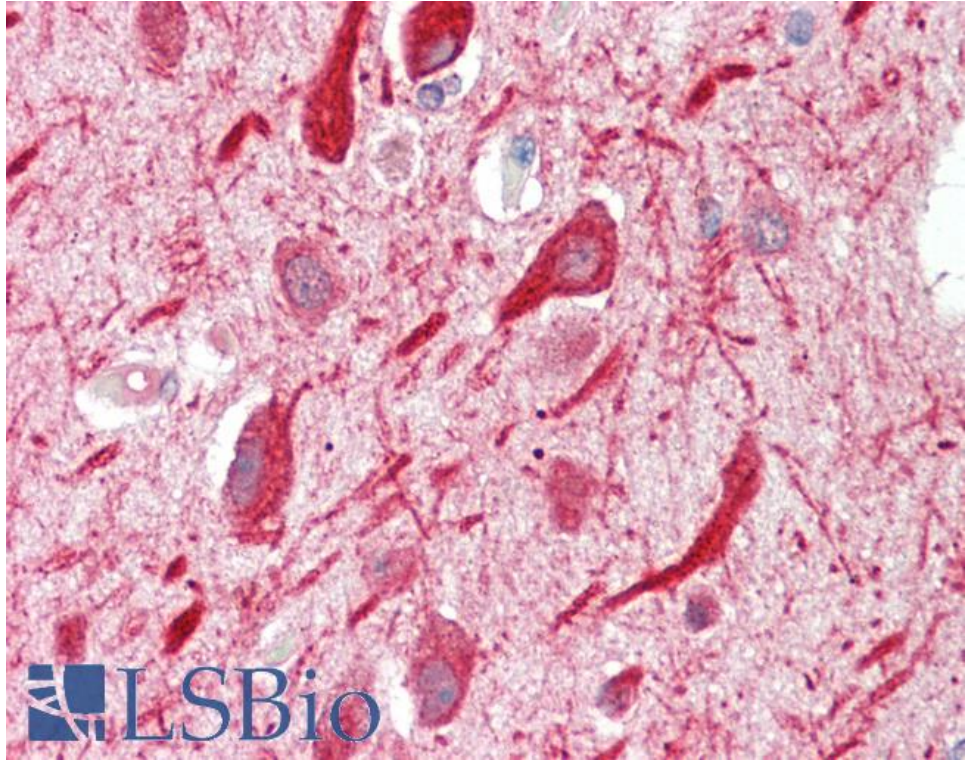
Expected from sequence similarity: Human, Rat, Dog, Pig, Cow



EB05234 staining (0.5 μ g/ml) of human muscle lysate (RIPA buffer, 35 μ g total protein per lane). Primary incubated for 1 hour. Detected by western blot using chemiluminescence.



EB05234 (5 μ g/ml) staining of paraffin embedded Human Heart. Steamed antigen retrieval with citrate buffer pH 6, AP-staining.



EB05234 (5µg/ml) staining of paraffin embedded Human Cortex. Steamed antigen retrieval with citrate buffer pH 6, AP-staining.