



## UK Office

### Everest Biotech Ltd

Cherwell Innovation Centre  
77 Heyford Park  
Upper Heyford  
Oxfordshire  
OX25 5HD  
UK

Enquiries:

[info@everestbiotech.com](mailto:info@everestbiotech.com)

Sales:

[sales@everestbiotech.com](mailto:sales@everestbiotech.com)

Tech support:

[support@everestbiotech.com](mailto:support@everestbiotech.com)

Tel: +44 (0)1869 238326

[www.everestbiotech.com](http://www.everestbiotech.com)

**Research Use Only. Not for  
diagnostic or therapeutic use.**

## EB10761 - Goat Anti-PRDM14 (aa414-427) Antibody

Size: 100µg specific antibody in 200µl



### Target Protein

**Principal Names:** PRDM14, PR domain containing 14, MGC59730, PFM11, PR domain zinc finger protein 14, PR domain-containing protein 14, PR-domain zinc finger protein 14

**Official Symbol:** PRDM14

**Accession Number(s):** NP\_078780.1

**Human GeneID(s):** [63978](#)

**Non-Human GeneID(s):** 383491 (mouse), 100365184 (rat)

### Immunogen

Peptide with sequence YRDKHLKYTPCVDK, from the internal region of the protein sequence according to NP\_078780.1.

Please note the [peptide](#) is available for sale.

### Purification and Storage

Purified from goat serum by ammonium sulphate precipitation followed by antigen affinity chromatography using the immunizing peptide.

Supplied at 0.5 mg/ml in Tris saline, 0.02% sodium azide, pH7.3 with 0.5% bovine serum albumin.

Aliquot and store at -20°C. Minimize freezing and thawing.

### Applications Tested

**Peptide ELISA:** antibody detection limit dilution 1:16000.

**Western blot:** Preliminary experiments gave an approx 40kDa band in Human Heart lysates after 0.1-1µg/ml antibody staining and this band was successfully blocked by incubation with the immunizing peptide. Preliminary experiments also gave an approx an approx 48-50kDa band in Human Lung and Kidney lysates and in nuclear lysates of cell lines Jurkat, HEK293 and MCF7. Please note that currently we cannot find an explanation in the literature for these bands we observe given the calculated size of 64.1kDa according to Human NP\_078780.1.

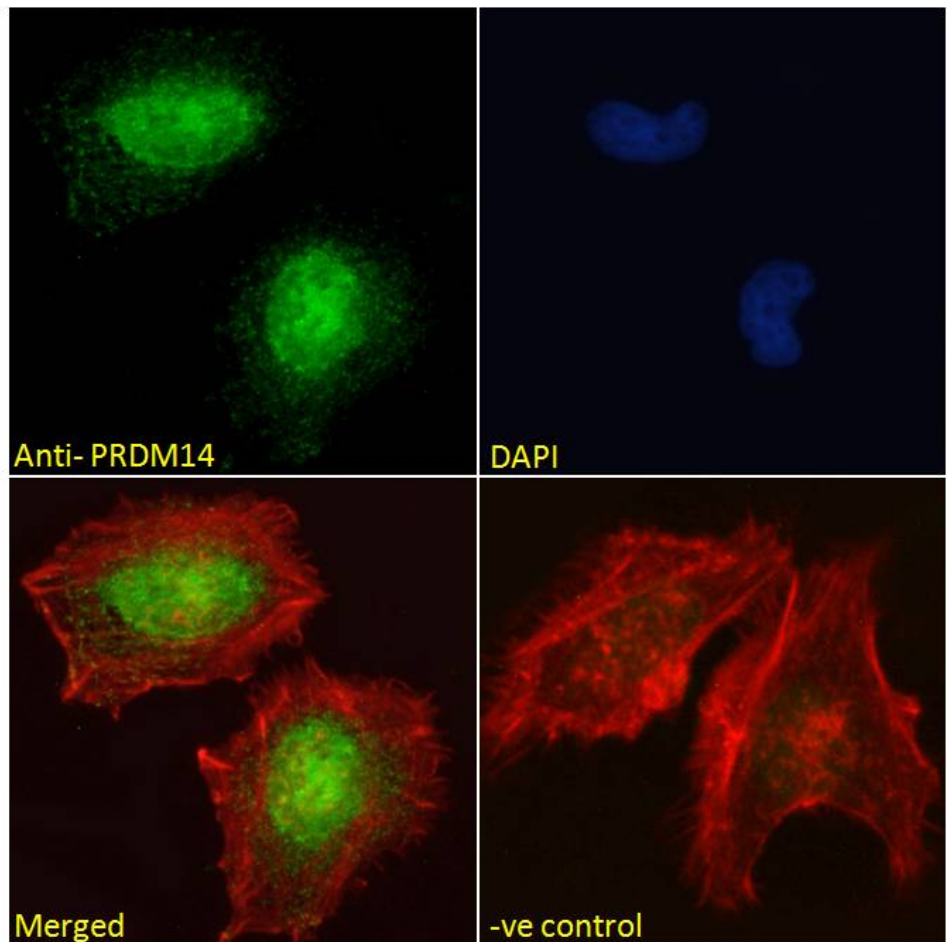
**Immunofluorescence:** Strong expression of the protein seen in the nuclei of HeLa cells. Recommended concentration: 10µg/ml.

**Flow Cytometry:** Flow cytometric analysis of HeLa cells. Recommended concentration: 10ug/ml.

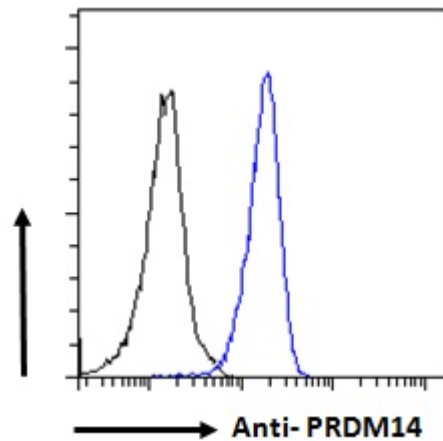
### Species Reactivity

**Tested:** Human

**Expected from sequence similarity:** Human, Mouse, Rat, Dog, Pig, Cow



EB10761 Immunofluorescence analysis of paraformaldehyde fixed HeLa cells, permeabilized with 0.15% Triton. Primary incubation 1hr (10ug/ml) followed by Alexa Fluor 488 secondary antibody (2ug/ml), showing nuclear staining. Actin filaments were stained with phalloidin (red) and the nuclear stain is DAPI (blue). Negative control: Unimmunized goat IgG (10ug/ml) followed by Alexa Fluor 488 secondary antibody (2ug/ml).



EB10761 Flow cytometric analysis of paraformaldehyde fixed HeLa cells (blue line), permeabilized with 0.5% Triton. Primary incubation 1hr (10ug/ml) followed by Alexa Fluor 488 secondary antibody (1ug/ml). IgG control: Unimmunized goat IgG (black line) followed by Alexa Fluor 488 secondary antibody.