



UK Office

Everest Biotech Ltd

Cherwell Innovation Centre
77 Heyford Park
Upper Heyford
Oxfordshire
OX25 5HD
UK

Enquiries:

info@everestbiotech.com

Sales:

sales@everestbiotech.com

Tech support:

support@everestbiotech.com

Tel: +44 (0)1869 238326

Fax: +44 (0)1869 238327

US Office

Everest Biotech c/o Abcore

405 Maple Street, Suite A106
Ramona,
CA 92065
USA

Inquiries:

info@everestbiotech.com

Sales:

usasales@everestbiotech.com

Tech support:

support@everestbiotech.com

Tel: 888-320-4628 (toll-free)

Fax: 888-841-9041

www.everestbiotech.com

**Research Use Only. Not for
diagnostic or therapeutic use.**

EB09549 - Goat Anti-PREX1 Antibody

Size: 100µg specific antibody in 200µl



Target Protein

Principal Names: PREX1, phosphatidylinositol-3,4,5-trisphosphate-dependent Rac exchange factor 1, KIAA1415, P-REX1, OTTHUMP00000031228, phosphatidylinositol 3,4,5-trisphosphate-dependent Rac exchanger 1

Official Symbol: PREX1

Accession Number(s): NP_065871.2

Human GeneID(s): [57580](#)

Non-Human GeneID(s): 277360 (mouse), 311647 (rat)

Immunogen

Peptide with sequence C-ERSNLPTDASTTA, from the internal region of the protein sequence according to NP_065871.2.

Please note the [peptide](#) is available for sale.

Purification and Storage

Purified from goat serum by ammonium sulphate precipitation followed by antigen affinity chromatography using the immunizing peptide.

Supplied at 0.5 mg/ml in Tris saline, 0.02% sodium azide, pH7.3 with 0.5% bovine serum albumin.

Aliquot and store at -20°C. Minimize freezing and thawing.

Applications Tested

Peptide ELISA: antibody detection limit dilution 1:16000.

Western blot: Approx 150kDa band observed in Human Brain (Temporal Cortex) lysates (calculated MW of 186kDa according to NP_065871.2). Recommended concentration: 1-3µg/ml.

IHC: Paraffin embedded Human Testis. Recommended concentration: 10µg/ml.

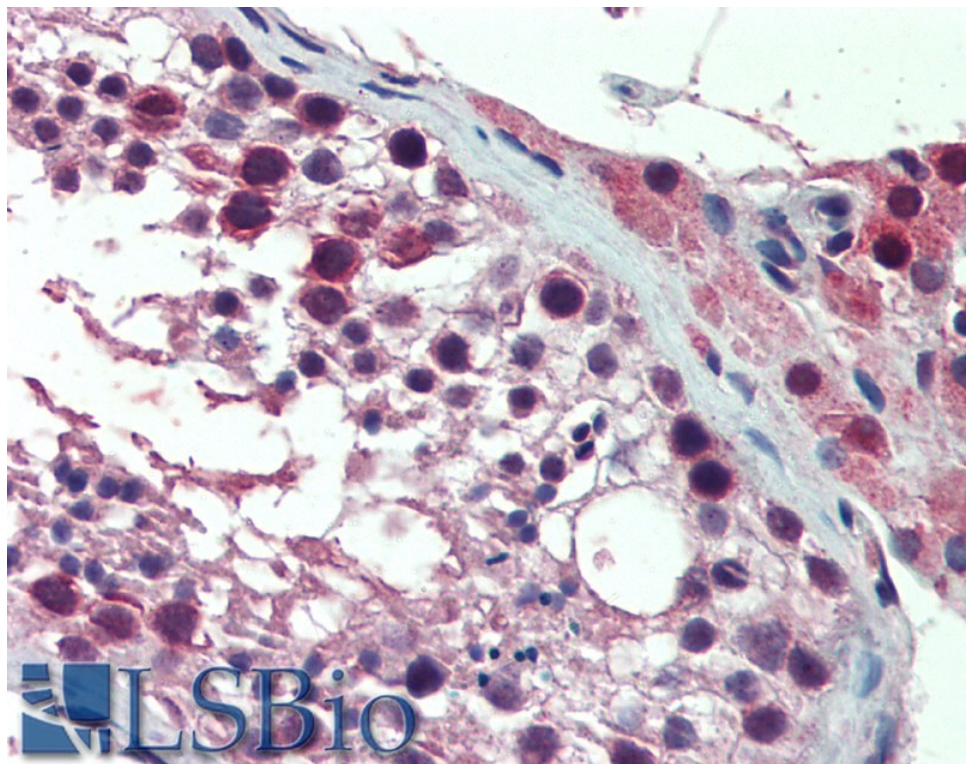
Species Reactivity

Tested: Human

Expected from sequence similarity: Human, Mouse, Rat, Dog, Cow



EB09549 (1µg/ml) staining of Human Temporal Cortex lysate (35µg protein in RIPA buffer). Primary incubation was 1 hour. Detected by chemiluminescence.



EB09549 (10µg/ml) staining of paraffin embedded Human Testis. Steamed antigen retrieval with citrate buffer pH 6, AP-staining.