



UK Office

Everest Biotech Ltd

Cherwell Innovation Centre
77 Heyford Park
Upper Heyford
Oxfordshire
OX25 5HD
UK

Enquiries:

info@everestbiotech.com

Sales:

sales@everestbiotech.com

Tech support:

support@everestbiotech.com

Tel: +44 (0)1869 238326

www.everestbiotech.com

**Research Use Only. Not for
diagnostic or therapeutic use.**

EB07297-T - Goat Anti-Prion Protein (143-153) Antibody - Trial

Size: 20µg specific antibody in 40µl



Target Protein

Principal Names: PRNP, prion protein (p27-30) (Creutzfeldt-Jakob disease, Gerstmann-Strausler-Scheinker syndrome, fatal familial insomnia), ASCR, CD230, CJD, GSS, MGC26679, PRIP, PrP, PrP27-30, PrP33-35C, PrPc, CD230 antigen, major prion protein, prion protein, prion protein (p27-30) (Creutzfeldt-Jakob disease Gerstmann-Strausler-Scheinker syndrome, fatal familial insomnia), prion protein PrP, prion-related protein

Official Symbol: PRNP

Accession Number(s): NP_000302.1

Human GeneID(s): [5621](#)

Non-Human GeneID(s): 19122 (mouse), 24686 (rat)

Important Comments: Reported variants represent identical protein (NP_000302.1; NP_898902.1; NP_001073590.1; NP_001073591.1; NP_001073592.1).

Immunogen

Peptide with sequence C-SDYEDRYREN, from the internal region of the protein sequence according to NP_000302.1.

Please note the [peptide](#) is available for sale.

Purification and Storage

Purified from goat serum by ammonium sulphate precipitation followed by antigen affinity chromatography using the immunizing peptide.

Supplied at 0.5 mg/ml in Tris saline, 0.02% sodium azide, pH7.3 with 0.5% bovine serum albumin.

Aliquot and store at -20°C. Minimize freezing and thawing.

Applications Tested

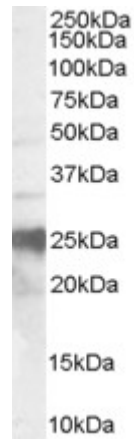
Peptide ELISA: antibody detection limit dilution 1:64000.

Western blot: Approx 25kDa band observed in Human Brain lysates (calculated MW of 27.7kDa according to NP_000302.1 and NP_898902.1). Recommended concentration: 0.3-1µg/ml.

Species Reactivity

Tested: Human

Expected from sequence similarity: Human, Pig, Cow



EB07297 (0.3µg/ml) staining of Human Brain lysate (35µg protein in RIPA buffer). Primary incubation was 1 hour. Detected by chemiluminescence.