



## UK Office

### Everest Biotech Ltd

Cherwell Innovation Centre  
77 Heyford Park  
Upper Heyford  
Oxfordshire  
OX25 5HD  
UK

Enquiries:

[info@everestbiotech.com](mailto:info@everestbiotech.com)

Sales:

[sales@everestbiotech.com](mailto:sales@everestbiotech.com)

Tech support:

[support@everestbiotech.com](mailto:support@everestbiotech.com)

Tel: +44 (0)1869 238326

Fax: +44 (0)1869 238327

## US Office

### Everest Biotech c/o Abcore

405 Maple Street, Suite A106  
Ramona,  
CA 92065  
USA

Inquiries:

[info@everestbiotech.com](mailto:info@everestbiotech.com)

Sales:

[usasales@everestbiotech.com](mailto:usasales@everestbiotech.com)

Tech support:

[support@everestbiotech.com](mailto:support@everestbiotech.com)

Tel: 888-320-4628 (toll-free)

Fax: 888-841-9041

[www.everestbiotech.com](http://www.everestbiotech.com)

**Research Use Only. Not for  
diagnostic or therapeutic use.**

## EB07297-T - Goat Anti-Prion Protein (143-153) Antibody - Trial

Size: 20µg specific antibody in 40µl



### Target Protein

**Principal Names:** PRNP, prion protein (p27-30) (Creutzfeldt-Jakob disease, Gerstmann-Strausler-Scheinker syndrome, fatal familial insomnia), ASCR, CD230, CJD, GSS, MGC26679, PRIP, PrP, PrP27-30, PrP33-35C, PrPc, CD230 antigen, major prion protein, prion protein, prion protein (p27-30) (Creutzfeldt-Jakob disease Gerstmann-Strausler-Scheinker syndrome, fatal familial insomnia), prion protein PrP, prion-related protein

**Official Symbol:** PRNP

**Accession Number(s):** NP\_000302.1

**Human GeneID(s):** [5621](#)

**Non-Human GeneID(s):** 19122 (mouse), 24686 (rat)

**Important Comments:** Reported variants represent identical protein (NP\_000302.1; NP\_898902.1; NP\_001073590.1; NP\_001073591.1; NP\_001073592.1).

### Immunogen

Peptide with sequence C-SDYEDRYREN, from the internal region of the protein sequence according to NP\_000302.1.

Please note the [peptide](#) is available for sale.

### Purification and Storage

Purified from goat serum by ammonium sulphate precipitation followed by antigen affinity chromatography using the immunizing peptide.

Supplied at 0.5 mg/ml in Tris saline, 0.02% sodium azide, pH7.3 with 0.5% bovine serum albumin.

Aliquot and store at -20°C. Minimize freezing and thawing.

### Applications Tested

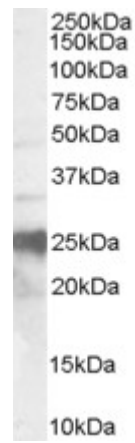
**Peptide ELISA:** antibody detection limit dilution 1:64000.

**Western blot:** Approx 25kDa band observed in Human Brain lysates (calculated MW of 27.7kDa according to NP\_000302.1 and NP\_898902.1). Recommended concentration: 0.3-1µg/ml.

### Species Reactivity

**Tested:** Human

**Expected from sequence similarity:** Human, Pig, Cow



EB07297 (0.3µg/ml) staining of Human Brain lysate (35µg protein in RIPA buffer). Primary incubation was 1 hour. Detected by chemiluminescence.