



## International Office

### Everest Biotech Ltd

Vector Laboratories, Inc.  
6737 Mowry Ave  
Newark, CA 94560  
United States

Customer Service:

[customerservice@vectorlabs.com](mailto:customerservice@vectorlabs.com)

Technical Service:

[technical@vectorlabs.com](mailto:technical@vectorlabs.com)

Tel: +1 (800) 227-6666

[www.everestbiotech.com](http://www.everestbiotech.com)

**Research Use Only. Not for  
diagnostic or therapeutic use.**

## EB12864 - Goat Anti-PRKACA Antibody

Size: 100µg specific antibody in 200µl



### Target Protein

**Principal Names:** PRKACA, protein kinase, cAMP-dependent, catalytic, alpha, PKACA, PPNAD4, PKA C-alpha, cAMP-dependent protein kinase catalytic subunit alpha, protein kinase A catalytic subunit

**Official Symbol:** PRKACA

**Accession Number(s):** NP\_002721.1; NP\_997401.1; NP\_001291278.1

**Human GeneID(s):** [5566](#)

**Important Comments:** This antibody is expected to recognize all three reported isoforms (NP\_002721.1; NP\_997401.1; NP\_001291278.1). Based on the choice of the immunizing peptide there is no expected cross-reactivity with the other subunits.

### Immunogen

Peptide with sequence C-ESPAQNTAHLQ, from the internal region (near N Terminus) of the protein sequence according to NP\_002721.1; NP\_997401.1; NP\_001291278.1.

Please note the [peptide](#) is available for sale.

### Purification and Storage

Purified from goat serum by ammonium sulphate precipitation followed by antigen affinity chromatography using the immunizing peptide.

Supplied at 0.5 mg/ml in Tris saline, 0.02% sodium azide, pH7.3 with 0.5% bovine serum albumin.

Aliquot and store at -20°C. Minimize freezing and thawing.

### Applications Tested

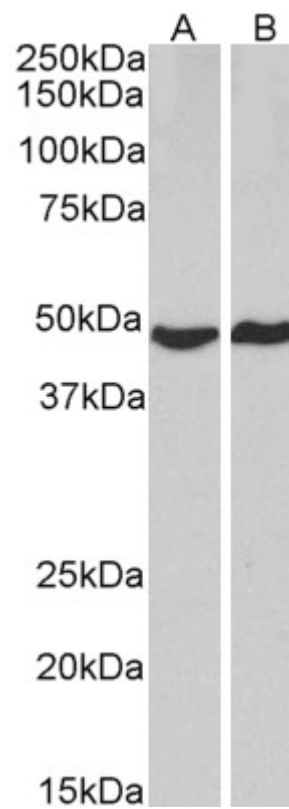
**Peptide ELISA:** antibody detection limit dilution 1:8000.

**Western blot:** Approx 48kDa band observed in lysates of cell line HeLa and MCF7 (calculated MW of 49.1kDa according to NP\_002721.1). Recommended concentration: 1-3µg/ml.

### Species Reactivity

**Tested:** Human

**Expected from sequence similarity:** Human



EB12864 (2 $\mu$ g/ml) staining of HeLa (A) and MCF7 (B) lysates (35 $\mu$ g protein in RIPA buffer). Primary incubation was 1 hour. Detected by chemiluminescence.