



UK Office

Everest Biotech Ltd

Cherwell Innovation Centre
77 Heyford Park
Upper Heyford
Oxfordshire
OX25 5HD
UK

Enquiries:

info@everestbiotech.com

Sales:

sales@everestbiotech.com

Tech support:

support@everestbiotech.com

Tel: +44 (0)1869 238326

www.everestbiotech.com

**Research Use Only. Not for
diagnostic or therapeutic use.**

EB11585-B - Goat Anti-PRKCB, Biotinylated Antibody

Size: 100µg specific antibody in 200µl



Target Protein

Principal Names: MGC41878, OTTHUMP00000162377, OTTHUMP00000162378, PKCB, PKC-B, PKC-beta, PRKCB, PRKCB1, PRKCB2, protein kinase C beta type, protein kinase C, beta, protein kinase C, beta 1 polypeptide

Official Symbol: PRKCB

Accession Number(s): NP_997700.1

Human GeneID(s): [5579](#)

Important Comments: This antibody is expected to recognize isoform 1 (NP_997700.1) only.

Immunogen

Peptide with sequence C-DKEFTRQPVELT., from the internal region (near C terminus) of the protein sequence according to NP_997700.1.

Please note the [peptide](#) is available for sale.

Purification and Storage

Purified from goat serum by ammonium sulphate precipitation followed by antigen affinity chromatography using the immunizing peptide.

Supplied at 0.5 mg/ml in Tris saline, 0.02% sodium azide, pH7.3 with 0.5% bovine serum albumin.

Aliquot and store at -20°C. Minimize freezing and thawing.

Applications Tested

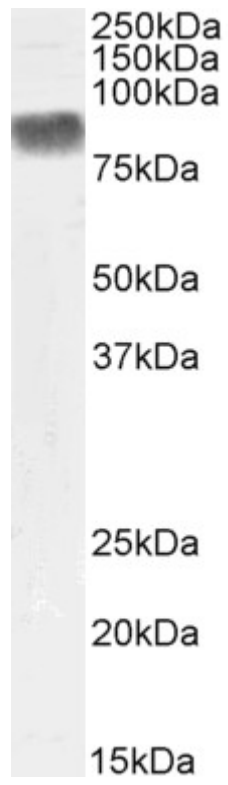
Peptide ELISA: antibody detection limit dilution 1:128000.

Western blot: Approx 80kDa band observed in lysates of Human Placenta (calculated MW of 76.9kDa according to NP_997700.1). Recommended concentration: 0.1-0.3µg/ml.

Species Reactivity

Tested: Human

Expected from sequence similarity: Human, Rat, Dog



Biotinylated EB11585 (0.3ug/ml) staining of Human Placenta lysate (35µg protein in RIPA buffer). Primary incubation was 1 hour. Detected by chemiluminescence, using streptavidin-HRP and using NAP blocker as a substitute for skimmed milk.