

## UK Office

### Everest Biotech Ltd

Cherwell Innovation Centre  
77 Heyford Park  
Upper Heyford  
Oxfordshire  
OX25 5HD  
UK

Enquiries:

[info@everestbiotech.com](mailto:info@everestbiotech.com)

Sales:

[sales@everestbiotech.com](mailto:sales@everestbiotech.com)

Tech support:

[support@everestbiotech.com](mailto:support@everestbiotech.com)

Tel: +44 (0)1869 238326

[www.everestbiotech.com](http://www.everestbiotech.com)

**Research Use Only. Not for  
diagnostic or therapeutic use.**

## EB09572 - Goat Anti-PRKCDBP Antibody

Size: 100µg specific antibody in 200µl



### Target Protein

**Principal Names:** PRKCDBP, protein kinase C, delta binding protein, HSRBC, MGC20400, SRBC, sdr-related gene product that binds to c-kinase

**Official Symbol:** CAVIN3

**Accession Number(s):** NP\_659477.2

**Human GeneID(s):** [112464](#)

**Non-Human GeneID(s):** 109042 (mouse), 85332 (rat)

### Immunogen

Peptide with sequence C-RRTGLQKVQSLR, from the internal region of the protein sequence according to NP\_659477.2.

Please note the [peptide](#) is available for sale.

### Purification and Storage

Purified from goat serum by ammonium sulphate precipitation followed by antigen affinity chromatography using the immunizing peptide.

Supplied at 0.5 mg/ml in Tris saline, 0.02% sodium azide, pH7.3 with 0.5% bovine serum albumin.

Aliquot and store at -20°C. Minimize freezing and thawing.

### Applications Tested

**Peptide ELISA:** antibody detection limit dilution 1:32000.

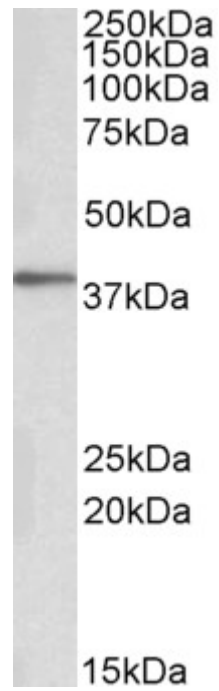
**Western blot:** Approx 38kDa band observed in Human Adipose, in Mouse Ovary and Rat Uterus and in NIH3T3 lysates (calculated MW of 27.7kDa according to Human NP\_659477.2, of 27.8kDa according to Mouse NP\_082720.1 and of 27.9kDa according to Rat NP\_604444.1). The observed molecular weight corresponds to earlier findings in literature with different antibodies (Bastiani M, J Cell Biol. 2009 Jun 29;185(7):1259-73. PMID: 19546242 ). Recommended concentration: 0.1-1µg/ml. Primary incubation was 1 hour.

**IHC:** Paraffin embedded Human Uterus. Recommended concentration: 3.75µg/ml.

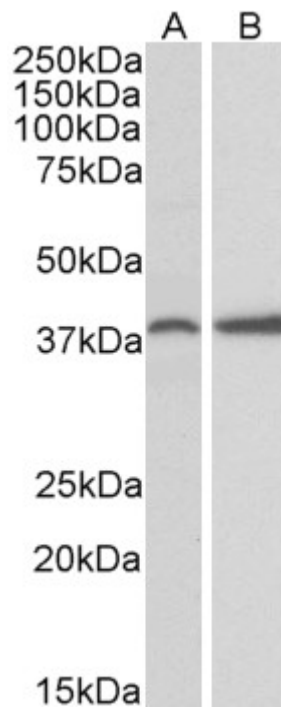
### Species Reactivity

**Tested:** Human, Mouse, Rat

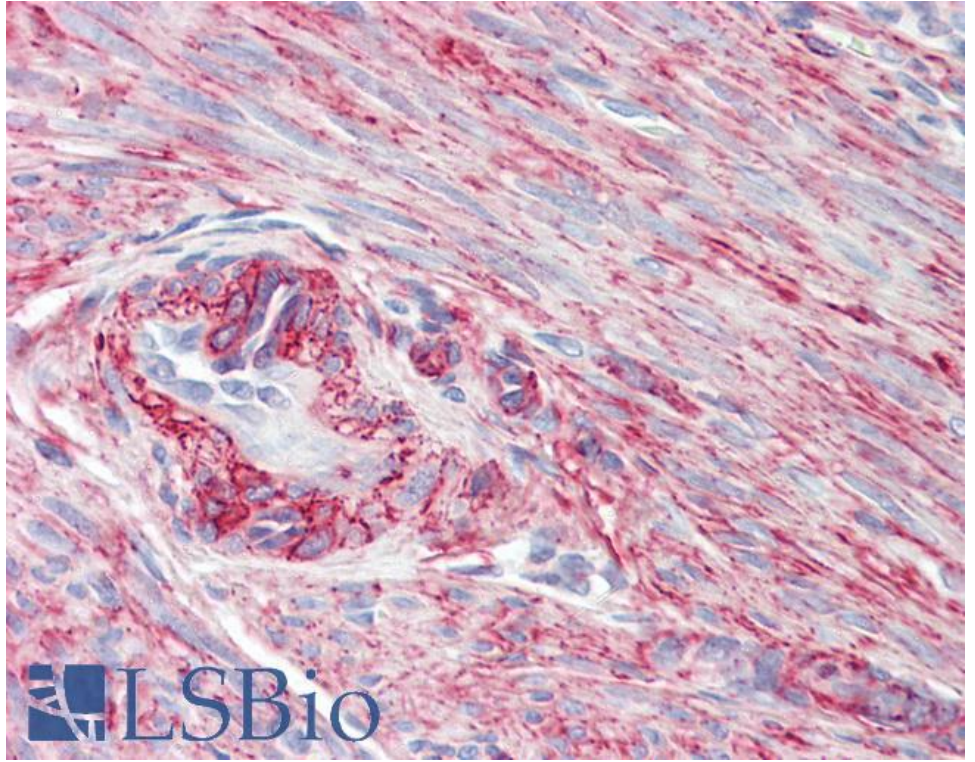
**Expected from sequence similarity:** Human, Mouse, Rat, Dog, Cow



EB09572 (0.1 $\mu$ g/ml) staining of Human Adipose cell lysate (35 $\mu$ g protein in RIPA buffer). Detected by chemiluminescence.



EB09572 (0.3 $\mu$ g/ml) staining of Mouse Ovary (A) and Rat Uterus (B) lysate (35 $\mu$ g protein in RIPA buffer). Detected by chemiluminescence.



EB09572 (3.75µg/ml) staining of paraffin embedded Human Uterus. Steamed antigen retrieval with citrate buffer pH 6, AP-staining.