



UK Office

Everest Biotech Ltd

Cherwell Innovation Centre
77 Heyford Park
Upper Heyford
Oxfordshire
OX25 5HD
UK

Enquiries:

info@everestbiotech.com

Sales:

sales@everestbiotech.com

Tech support:

support@everestbiotech.com

Tel: +44 (0)1869 238326

Fax: +44 (0)1869 238327

US Office

Everest Biotech c/o Abcore

405 Maple Street, Suite A106
Ramona,
CA 92065
USA

Inquiries:

info@everestbiotech.com

Sales:

usasales@everestbiotech.com

Tech support:

support@everestbiotech.com

Tel: 888-320-4628 (toll-free)

Fax: 888-841-9041

www.everestbiotech.com

**Research Use Only. Not for
diagnostic or therapeutic use.**

EB09572 - Goat Anti-PRKCDBP Antibody

Size: 100µg specific antibody in 200µl



Target Protein

Principal Names: PRKCDBP, protein kinase C, delta binding protein, HSRBC, MGC20400, SRBC, sdr-related gene product that binds to c-kinase

Official Symbol: CAVIN3

Accession Number(s): NP_659477.2

Human GeneID(s): [112464](#)

Non-Human GeneID(s): 109042 (mouse), 85332 (rat)

Immunogen

Peptide with sequence C-RRTGLQKVQSLR, from the internal region of the protein sequence according to NP_659477.2.

Please note the [peptide](#) is available for sale.

Purification and Storage

Purified from goat serum by ammonium sulphate precipitation followed by antigen affinity chromatography using the immunizing peptide.

Supplied at 0.5 mg/ml in Tris saline, 0.02% sodium azide, pH7.3 with 0.5% bovine serum albumin.

Aliquot and store at -20°C. Minimize freezing and thawing.

Applications Tested

Peptide ELISA: antibody detection limit dilution 1:32000.

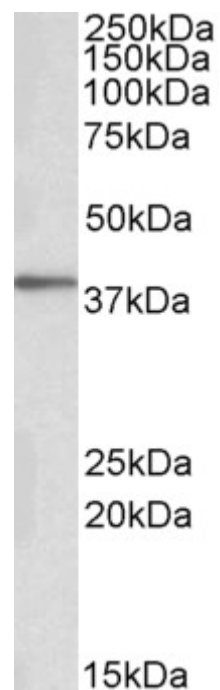
Western blot: Approx 38kDa band observed in Human Adipose, in Mouse Ovary and Rat Uterus and in NIH3T3 lysates (calculated MW of 27.7kDa according to Human NP_659477.2, of 27.8kDa according to Mouse NP_082720.1 and of 27.9kDa according to Rat NP_604444.1). The observed molecular weight corresponds to earlier findings in literature with different antibodies (Bastiani M, J Cell Biol. 2009 Jun 29;185(7):1259-73. PMID: 19546242). Recommended concentration: 0.1-1µg/ml. Primary incubation was 1 hour.

IHC: Paraffin embedded Human Uterus. Recommended concentration: 3.75µg/ml.

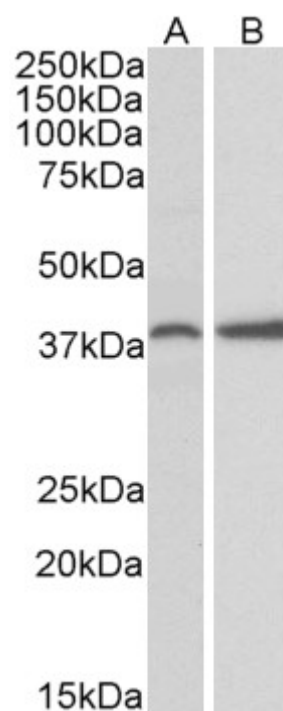
Species Reactivity

Tested: Human, Mouse, Rat

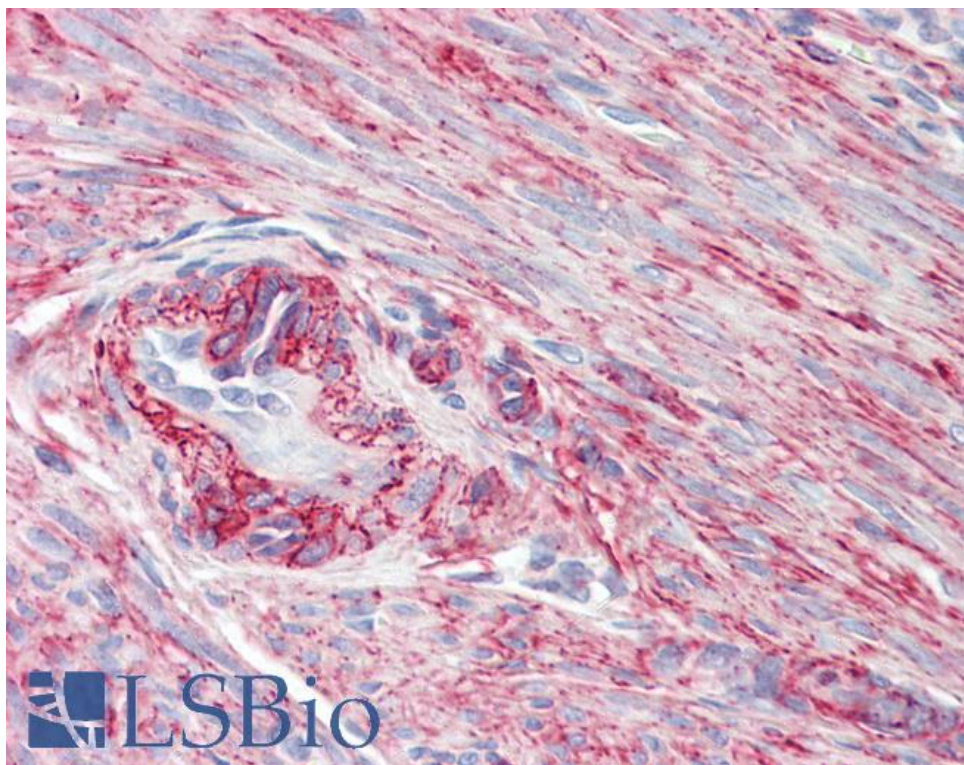
Expected from sequence similarity: Human, Mouse, Rat, Dog, Cow



EB09572 (0.1 μ g/ml) staining of Human Adipose cell lysate (35 μ g protein in RIPA buffer). Detected by chemiluminescence.



EB09572 (0.3 μ g/ml) staining of Mouse Ovary (A) and Rat Uterus (B) lysate (35 μ g protein in RIPA buffer). Detected by chemiluminescence.



EB09572 (3.75µg/ml) staining of paraffin embedded Human Uterus. Steamed antigen retrieval with citrate buffer pH 6, AP-staining.