



## UK Office

### Everest Biotech Ltd

Cherwell Innovation Centre  
77 Heyford Park  
Upper Heyford  
Oxfordshire  
OX25 5HD  
UK

Enquiries:

[info@everestbiotech.com](mailto:info@everestbiotech.com)

Sales:

[sales@everestbiotech.com](mailto:sales@everestbiotech.com)

Tech support:

[support@everestbiotech.com](mailto:support@everestbiotech.com)

Tel: +44 (0)1869 238326

[www.everestbiotech.com](http://www.everestbiotech.com)

**Research Use Only. Not for  
diagnostic or therapeutic use.**

## EB11556 - Goat Anti-PRMT3 (aa468-421) Antibody

Size: 100µg specific antibody in 200µl



### Target Protein

**Principal Names:** heterogeneous nuclear ribonucleoprotein methyltransferase-like 3, heterogeneous nuclear ribonucleoprotein methyltransferase-like protein 3, HMT1 hnRNP methyltransferase-like 3, HRMT1L3, OTTHUMP00000231732, OTTHUMP00000231735, PRMT3, protein arginine methyltransferase 3, protein arginine N-methyltransferase 3

**Official Symbol:** PRMT3

**Accession Number(s):** NP\_005779.1; NP\_001138638.1; NP\_001138639.1

**Human GeneID(s):** [10196](#)

**Important Comments:** This antibody is expected to recognize all reported isoforms (NP\_005779.1; NP\_001138638.1; NP\_001138639.1).

### Immunogen

Peptide with sequence DPKTLISEPCGIKH, from the internal region of the protein sequence according to NP\_005779.1; NP\_001138638.1; NP\_001138639.1.

Please note the [peptide](#) is available for sale.

### Purification and Storage

Purified from goat serum by ammonium sulphate precipitation followed by antigen affinity chromatography using the immunizing peptide.

Supplied at 0.5 mg/ml in Tris saline, 0.02% sodium azide, pH7.3 with 0.5% bovine serum albumin.

Aliquot and store at -20°C. Minimize freezing and thawing.

### Applications Tested

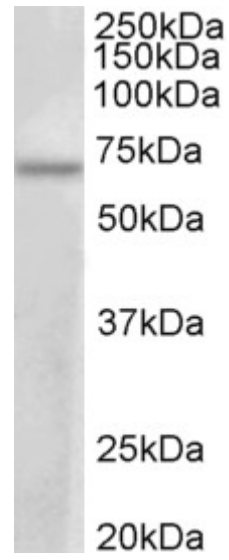
**Peptide ELISA:** antibody detection limit dilution 1:16000.

**Western blot:** Approx 70kDa band observed in lysates of cell line MCF7 (calculated MW of 59.9kDa according to NP\_005779.1). The observed molecular weight corresponds to earlier findings in literature with different antibodies (Swiercz et al, J Biol Chem. 2007 Jun 8;282(23):16917-23. PMID: 17439947). Recommended concentration: 1-3µg/ml.

### Species Reactivity

**Tested:** Human

**Expected from sequence similarity:** Human



EB11556 (1µg/ml) staining of MCF7 lysate (35µg protein in RIPA buffer). Primary incubation was 1 hour.  
Detected by chemiluminescence.