

UK Office

Everest Biotech Ltd

Cherwell Innovation Centre
77 Heyford Park
Upper Heyford
Oxfordshire
OX25 5HD
UK

Enquiries:

info@everestbiotech.com

Sales:

sales@everestbiotech.com

Tech support:

support@everestbiotech.com

Tel: +44 (0)1869 238326

www.everestbiotech.com

**Research Use Only. Not for
diagnostic or therapeutic use.**

EB11752 - Goat Anti-Pro-EGF Antibody

Size: 100µg specific antibody in 200µl



Target Protein

Principal Names: beta-urogastrone, EGF, epidermal growth factor, HOMG4, OTTHUMP00000162922, OTTHUMP00000219721, OTTHUMP00000219722, pro-epidermal growth factor, URG

Official Symbol: EGF

Accession Number(s): NP_001954.2; NP_001171601.1; NP_001171602.1

Human GeneID(s): [1950](#)

Important Comments: This antibody is expected to recognize all reported isoforms (NP_001954.2; NP_001171601.1; NP_001171602.1), but not the mature form. The immunizing peptide represents part of the extracellular domain.

Immunogen

Peptide with sequence SRQERVCNIEKNVS, from the internal region (near the N terminus) of the protein sequence according to NP_001954.2; NP_001171601.1; NP_001171602.1.

Please note the [peptide](#) is available for sale.

Purification and Storage

Purified from goat serum by ammonium sulphate precipitation followed by antigen affinity chromatography using the immunizing peptide.

Supplied at 0.5 mg/ml in Tris saline, 0.02% sodium azide, pH7.3 with 0.5% bovine serum albumin.

Aliquot and store at -20°C. Minimize freezing and thawing.

Applications Tested

Peptide ELISA: antibody detection limit dilution 1:128000.

Western blot: Approx 160kDa double band observed in Human Prostate lysates (calculated MW of 134kDa according to NP_001954.2). The two bands represent glycosylated forms of the mature protein. Recommended concentration: 1-3µg/ml. Primary incubation was 1 hour.

IHC: Paraffin embedded Human Skin. Recommended concentration: 5µg/ml.

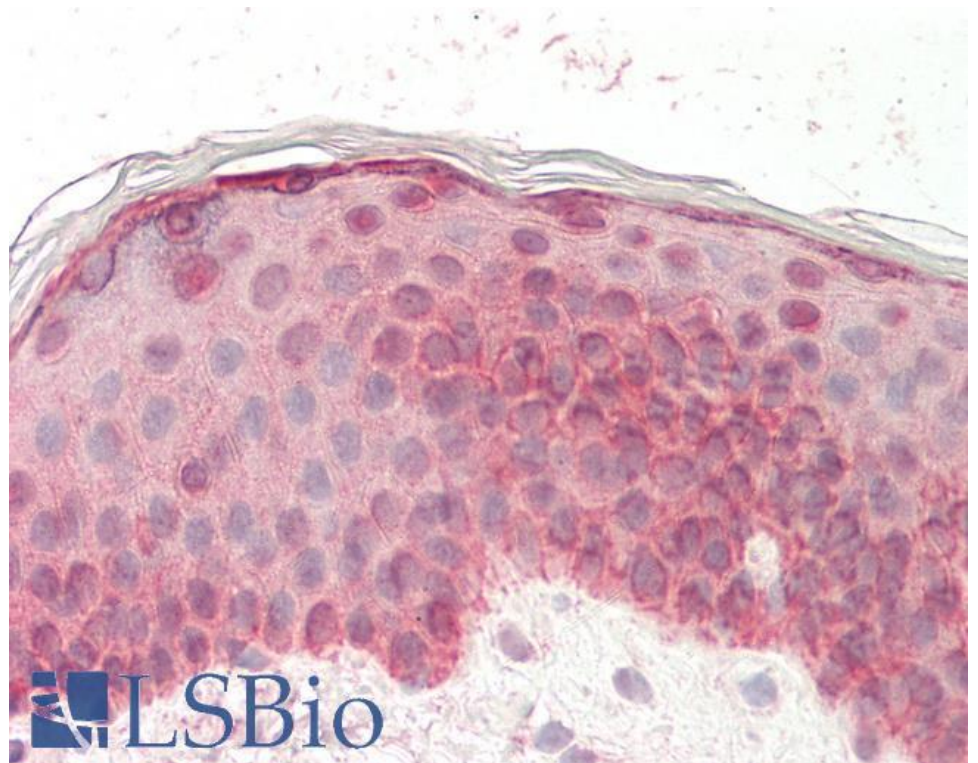
Species Reactivity

Tested: Human

Expected from sequence similarity: Human, Dog



EB11752 (1 μ g/ml) staining of Human Prostate lysate (35 μ g protein in RIPA buffer). Detected by chemiluminescence.



EB11752 (5 μ g/ml) staining of paraffin embedded Human Skin. Steamed antigen retrieval with citrate buffer pH 6, AP-staining.