



UK Office

Everest Biotech Ltd

Cherwell Innovation Centre
77 Heyford Park
Upper Heyford
Oxfordshire
OX25 5HD
UK

Enquiries:

info@everestbiotech.com

Sales:

sales@everestbiotech.com

Tech support:

support@everestbiotech.com

Tel: +44 (0)1869 238326

Fax: +44 (0)1869 238327

US Office

Everest Biotech c/o Abcore

405 Maple Street, Suite A106
Ramona,
CA 92065
USA

Inquiries:

info@everestbiotech.com

Sales:

usasales@everestbiotech.com

Tech support:

support@everestbiotech.com

Tel: 888-320-4628 (toll-free)

Fax: 888-841-9041

www.everestbiotech.com

**Research Use Only. Not for
diagnostic or therapeutic use.**

EB09682 - Goat Anti-PROKR2 Antibody

Size: 100µg specific antibody in 200µl



Target Protein

Principal Names: PROKR2, prokineticin receptor 2, GPR73L1, GPR73b, GPRg2, KAL3, PKR2, dJ680N4.3, G protein-coupled receptor 73-like 1, OTTHUMP00000030192

Official Symbol: PROKR2

Accession Number(s): NP_658986.1

Human GeneID(s): [128674](#)

Non-Human GeneID(s): 192649 (rat)

Immunogen

Peptide with sequence C-NGNTSFTPNFN, from the internal region of the protein sequence according to NP_658986.1.

Please note the [peptide](#) is available for sale.

Purification and Storage

Purified from goat serum by ammonium sulphate precipitation followed by antigen affinity chromatography using the immunizing peptide.

Supplied at 0.5 mg/ml in Tris saline, 0.02% sodium azide, pH7.3 with 0.5% bovine serum albumin.

Aliquot and store at -20°C. Minimize freezing and thawing.

Applications Tested

Peptide ELISA: antibody detection limit dilution 1:32000.

Western blot: Approx 45kDa band observed in Human Brain (Cerebellum), Testis and Thyroid Gland and in Rat Brain, Stomach and Testis lysates (calculated MW of 44.0kDa according to Human NP_658986.1 and 47.9kDa according to Rat NP_620434.1).

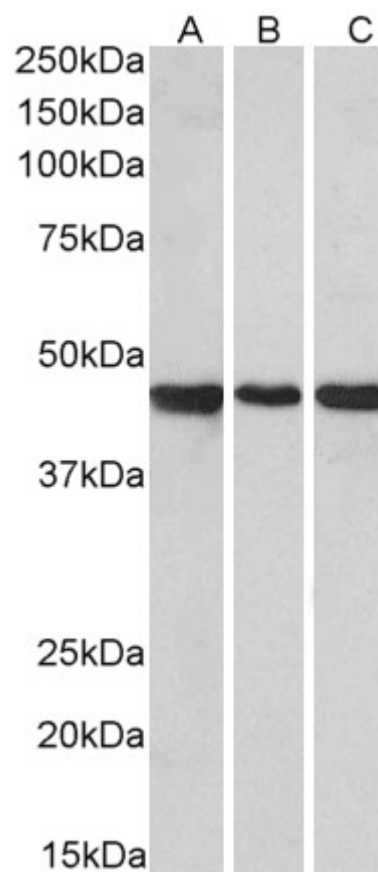
Recommended concentration: 0.3-1µg/ml. Primary incubation was 1 hour.

IHC: Paraffin embedded Human Brain (Cortex). Recommended concentration: 3.75µg/ml.

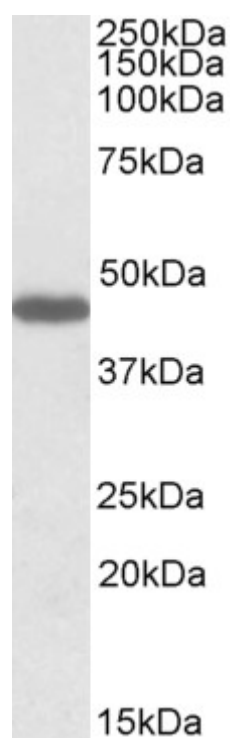
Species Reactivity

Tested: Human, Rat

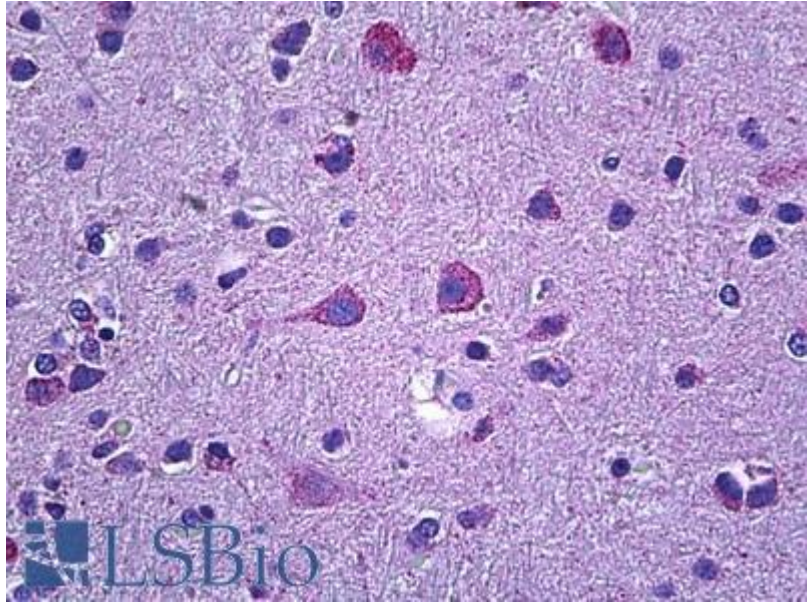
Expected from sequence similarity: Human, Rat



EB09682 (0.1µg/ml) staining of Human Cerebellum (A), Rat Brain (B) and Rat Testis (C) lysate (35µg protein in RIPA buffer). Detected by chemiluminescence.



EB09682 (1µg/ml) staining of Rat Stomach lysate (35µg protein in RIPA buffer). Detected by chemiluminescence.



EB09682 (3.75µg/ml) staining of paraffin embedded Human Cortex. Steamed antigen retrieval with citrate buffer pH 6, AP-staining.