



## International Office

### Everest Biotech Ltd

Vector Laboratories, Inc.  
6737 Mowry Ave  
Newark, CA 94560  
United States

Customer Service:

[customerservice@vectorlabs.com](mailto:customerservice@vectorlabs.com)

Technical Service:

[technical@vectorlabs.com](mailto:technical@vectorlabs.com)

Tel: +1 (800) 227-6666

[www.everestbiotech.com](http://www.everestbiotech.com)

**Research Use Only. Not for  
diagnostic or therapeutic use.**

## EB11822 - Goat Anti-PROM1 / CD133 (aa310-322) Antibody

Size: 100µg specific antibody in 200µl



### Target Protein

**Principal Names:** AC133, antigen AC133, CD133, CORD12, hematopoietic stem cell antigen, hPROMinin, MCDR2, OTTHUMP00000217744, OTTHUMP00000217745, OTTHUMP00000217746, PROM1, prominin 1, prominin-1, prominin-like 1, prominin-like protein 1, PROML1, RP41, STGD4

**Official Symbol:** PROM1

**Accession Number(s):** NP\_006008.1; NP\_001139319.1; NP\_001139324.1;  
NP\_001139323.1; NP\_001139322.1; NP\_001139321.1

**Human GenelD(s):** [8842](#)

**Important Comments:** This antibody is expected to recognize all reported isoforms (NP\_006008.1; NP\_001139319.1; NP\_001139324.1; NP\_001139323.1; NP\_001139322.1; NP\_001139321.1). Reported variants represent identical protein: NP\_001139320.1, NP\_001139319.1

### Immunogen

Peptide with sequence HPSSETCNSIRLS, from the internal region of the protein sequence according to NP\_006008.1; NP\_001139319.1; NP\_001139324.1; NP\_001139323.1; NP\_001139322.1; NP\_001139321.1.

Please note the [peptide](#) is available for sale.

### Purification and Storage

Purified from goat serum by ammonium sulphate precipitation followed by antigen affinity chromatography using the immunizing peptide.

Supplied at 0.5 mg/ml in Tris saline, 0.02% sodium azide, pH7.3 with 0.5% bovine serum albumin.

Aliquot and store at -20°C. Minimize freezing and thawing.

### Applications Tested

**Peptide ELISA:** antibody detection limit dilution 1:32000.

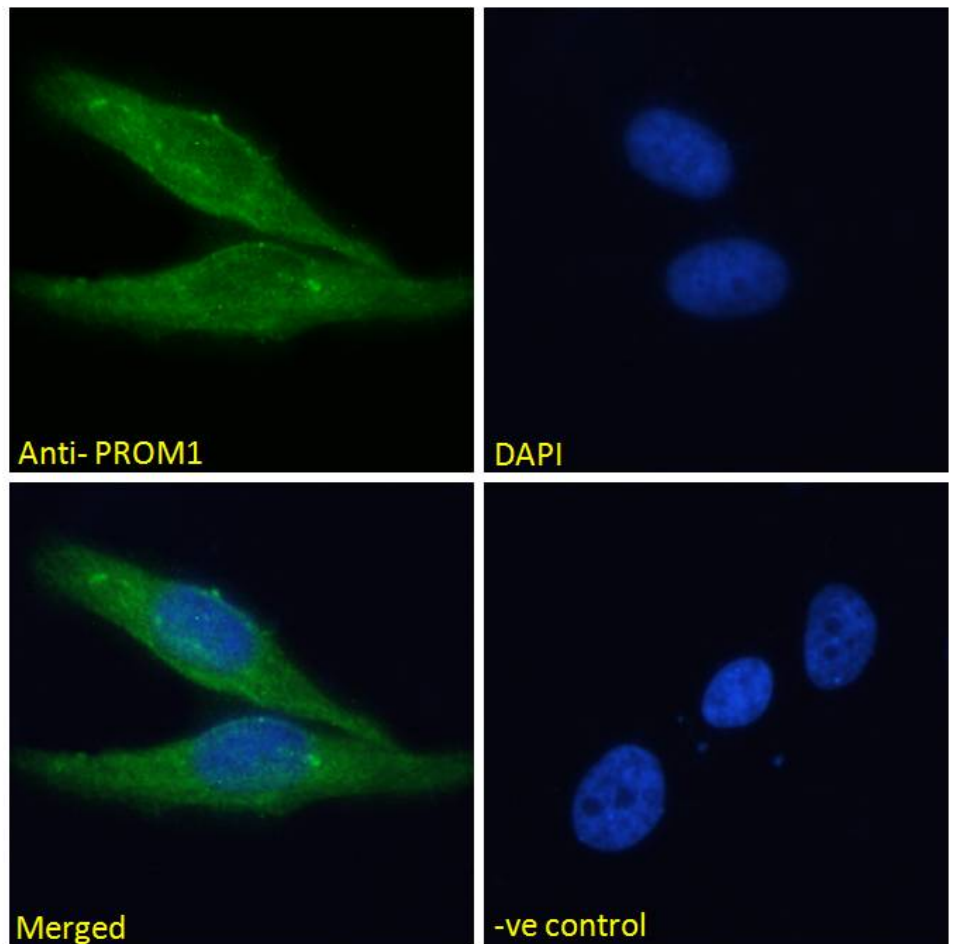
**Immunofluorescence:** Strong expression of the protein seen in the cytoplasm of HeLa and U2OS cells. Recommended concentration: 10µg/ml.

**Flow Cytometry:** Flow cytometric analysis of HeLa cells. Recommended concentration: 10ug/ml.

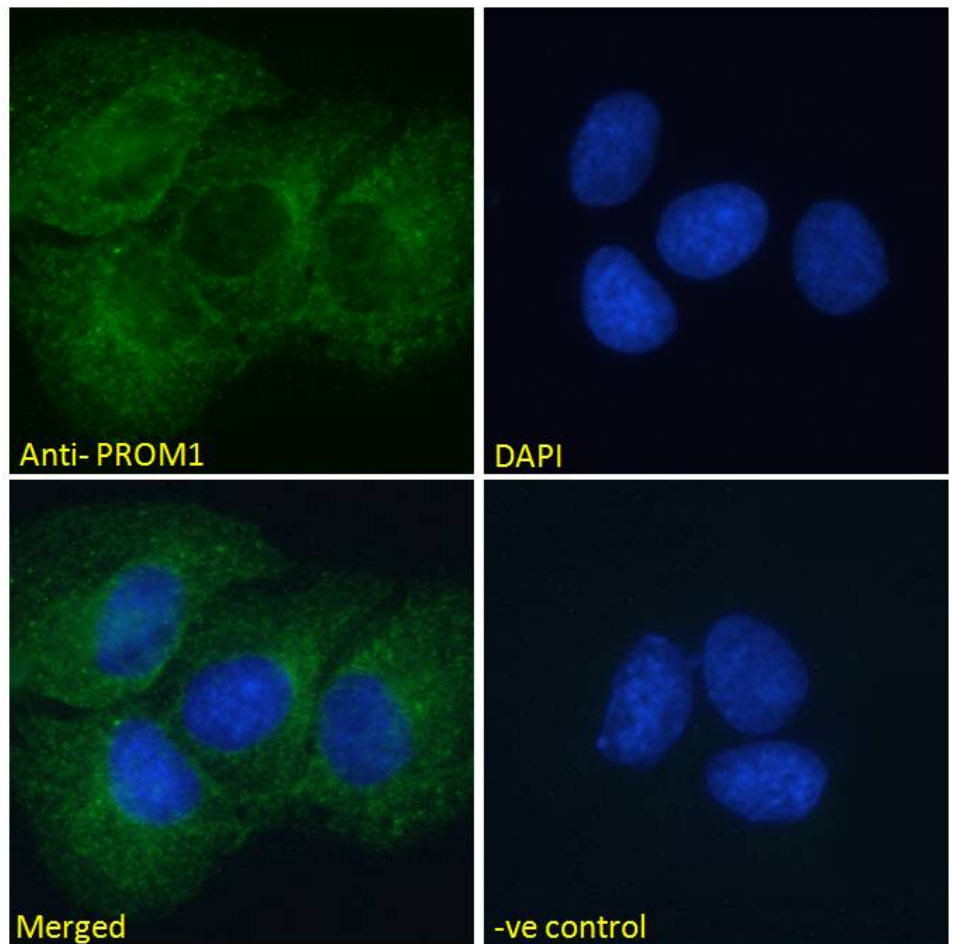
### Species Reactivity

**Tested:** Human

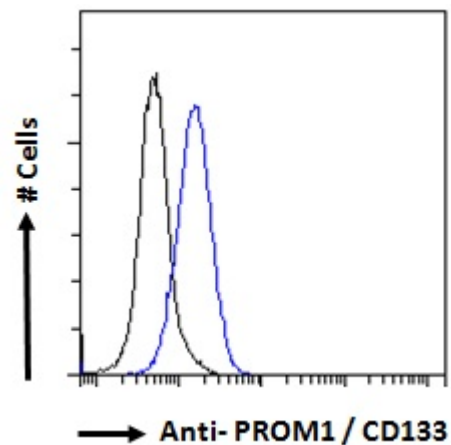
**Expected from sequence similarity:** Human



EB11822 Immunofluorescence analysis of paraformaldehyde fixed HeLa cells, permeabilized with 0.15% Triton. Primary incubation 1hr (10ug/ml) followed by Alexa Fluor 488 secondary antibody (2ug/ml), showing cytoplasmic/membrane staining. The nuclear stain is DAPI (blue). Negative control: Unimmunized goat IgG (10ug/ml) followed by Alexa Fluor 488 secondary antibody (2ug/ml).



EB11822 Immunofluorescence analysis of paraformaldehyde fixed U2OS cells, permeabilized with 0.15% Triton. Primary incubation 1hr (10ug/ml) followed by Alexa Fluor 488 secondary antibody (2ug/ml), showing cytoplasmic staining. The nuclear stain is DAPI (blue). Negative control: Unimmunized goat IgG (10ug/ml) followed by Alexa Fluor 488 secondary antibody (2ug/ml).



EB11822 Flow cytometric analysis of paraformaldehyde fixed HeLa cells (blue line), permeabilized with 0.5% Triton. Primary incubation overnight (10ug/ml) followed by Alexa Fluor 488 secondary antibody (1ug/ml). IgG control: Unimmunized goat IgG (black line) followed by Alexa Fluor 488 secondary antibody.