



International Office

Everest Biotech Ltd

Vector Laboratories, Inc.
6737 Mowry Ave
Newark, CA 94560
United States

Customer Service:

customerservice@vectorlabs.com

Technical Service:

technical@vectorlabs.com

Tel: +1 (800) 227-6666

www.everestbiotech.com

**Research Use Only. Not for
diagnostic or therapeutic use.**

EB06727 - Goat Anti-Proopiomelanocortin / POMC Antibody

Size: 100µg specific antibody in 200µl



Target Protein

Principal Names: POMC, proopiomelanocortin, Precursor of MSH, POC, ACTH, CLIP, adrenocorticotropin/ beta-lipotropin/ alpha-melanocyte stimulating hormone/ beta-melanocyte stimulating hormone/ beta-endorphin, LPH, NPP, OTTHUMP00000119991, OTTHUMP00000200964, adrenocorticotrophic hormone, adrenocorticotropin, alpha-melanocyte-stimulating hormone, beta-LPH, beta-MSH, beta-melanocyte-stimulating hormone, corticotropin-like intermediary peptide, gamma-LPH, gamma-MSH, lipotropin beta, lipotropin gamma, melanotropin alpha, melanotropin beta, melanotropin gamma, met-enkephalin, pro-ACTH-endorphin, proopiomelanocortin preproprotein

Official Symbol: POMC

Accession Number(s): NP_000930.1; NP_001030333.1

Human GenelD(s): [5443](#)

Immunogen

Peptide with sequence C-NAIIKNAYKKGE, from the C Terminus of the protein sequence according to NP_000930.1; NP_001030333.1.

Please note the [peptide](#) is available for sale.

Purification and Storage

Purified from goat serum by ammonium sulphate precipitation followed by antigen affinity chromatography using the immunizing peptide.

Supplied at 0.5 mg/ml in Tris saline, 0.02% sodium azide, pH7.3 with 0.5% bovine serum albumin.

Aliquot and store at -20°C. Minimize freezing and thawing.

Applications Tested

Peptide ELISA: antibody detection limit dilution 1:128000.

Western blot: Preliminary testing showed a band at approx 30kDa in A431 cell lysate after 1µg/ml antibody staining (calculated MW of 29.4kDa according to NP_000930.1). Primary incubation 1 hour at room temperature.

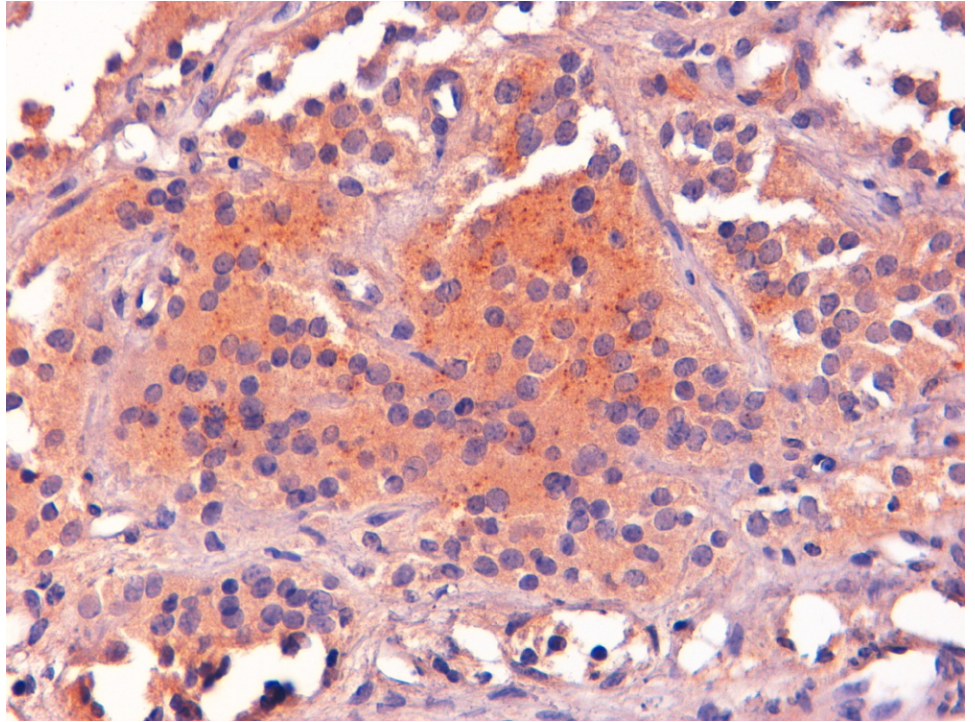
IHC: In paraffin embedded Human Anterior Pituitary Gland shows vesilulate staining in glandular cells. Recommended concentration: 2-4µg/ml.

Flow Cytometry: Flow cytometric analysis of A431 cells. Recommended concentration: 10ug/ml.

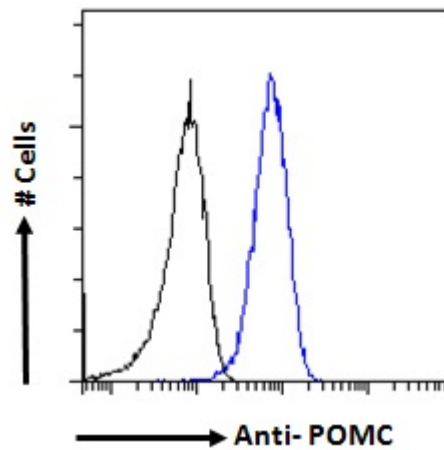
Species Reactivity

Tested: Human

Expected from sequence similarity: Human



EB06727 (2µg/ml) staining of paraffin embedded Human Pituitary Gland. Steamed antigen retrieval with Tris/EDTA buffer pH 9, HRP-staining.



EB06727 Flow cytometric analysis of paraformaldehyde fixed A431 cells (blue line), permeabilized with 0.5% Triton. Primary incubation 1hr (10µg/ml) followed by Alexa Fluor 488 secondary antibody (1µg/ml). IgG control: Unimmunized goat IgG (black line) followed by Alexa Fluor 488 secondary antibody.