



UK Office

Everest Biotech Ltd

Cherwell Innovation Centre
77 Heyford Park
Upper Heyford
Oxfordshire
OX25 5HD
UK

Enquiries:

info@everestbiotech.com

Sales:

sales@everestbiotech.com

Tech support:

support@everestbiotech.com

Tel: +44 (0)1869 238326

www.everestbiotech.com

**Research Use Only. Not for
diagnostic or therapeutic use.**

EB06566 - Goat Anti-Prostaglandin dehydrogenase 1 Antibody

Size: 100µg specific antibody in 200µl



Target Protein

Principal Names: Prostaglandin dehydrogenase 1, HPGD, PGDH1, 15-PGDH, hydroxyprostaglandin dehydrogenase 15-(NAD)

Official Symbol: HPGD

Accession Number(s): NP_000851.2

Human GeneID(s): [3248](#)

Immunogen

Peptide with sequence C-DYDTTPFQAKTQ, from the C Terminus of the protein sequence according to NP_000851.2.

Please note the [peptide](#) is available for sale.

Purification and Storage

Purified from goat serum by ammonium sulphate precipitation followed by antigen affinity chromatography using the immunizing peptide.

Supplied at 0.5 mg/ml in Tris saline, 0.02% sodium azide, pH7.3 with 0.5% bovine serum albumin.

Aliquot and store at -20°C. Minimize freezing and thawing.

Applications Tested

Peptide ELISA: antibody detection limit dilution 1:128000.

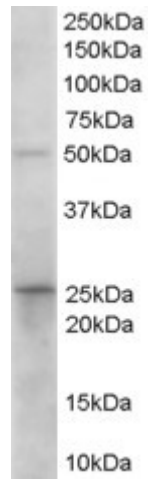
Western blot: Experiments gave bands at approx 26kDa and 50kDa in Human Duodenum lysates after 0.1µg/ml antibody staining. These bands correspond to earlier findings in literature with different antibodies (PMID: 11889207). This protein has a calculated MW of 29.0kDa according to NP_000851. Recommended concentration: 0.1-1µg/ml. Primary incubation was 1 hour.

IHC: Paraffin embedded Human Colon and Liver. Recommended concentration: 2.5µg/ml.

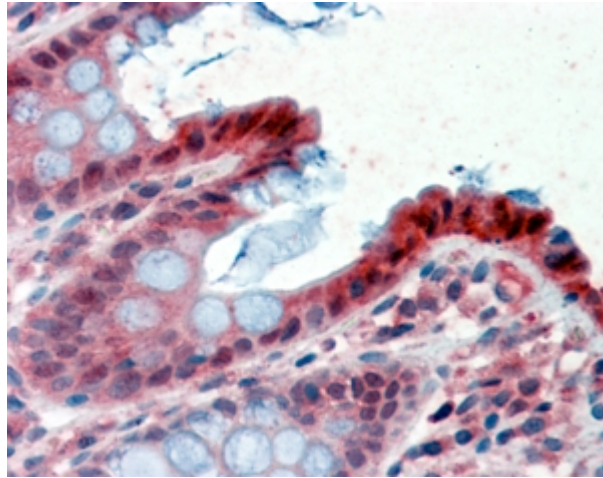
Species Reactivity

Tested: Human

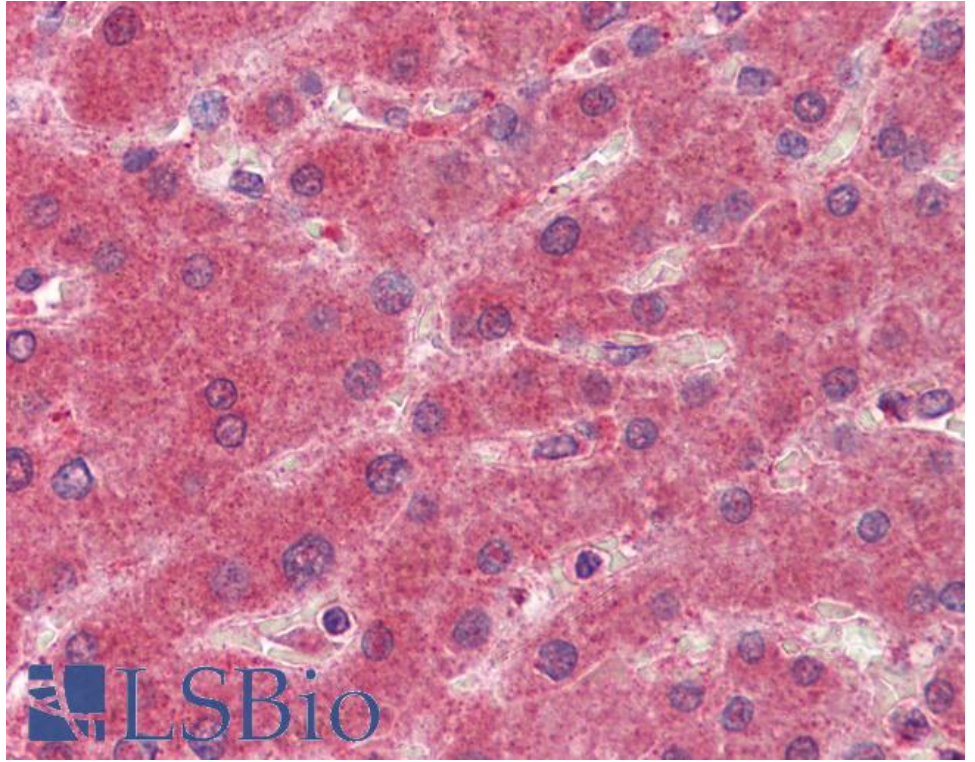
Expected from sequence similarity: Human



EB06566 (0.1µg/ml) staining of Human Duodenum lysate (35µg protein in RIPA buffer). Detected by chemiluminescence.



EB06566 (2.5µg/ml) staining of paraffin embedded Human Colon. Steamed antigen retrieval with citrate buffer pH 6, AP-staining.



EB06566 (2.5µg/ml) staining of paraffin embedded Human Liver. Steamed antigen retrieval with citrate buffer pH 6, AP-staining.