

UK Office

Everest Biotech Ltd

Cherwell Innovation Centre
77 Heyford Park
Upper Heyford
Oxfordshire
OX25 5HD
UK

Enquiries:

info@everestbiotech.com

Sales:

sales@everestbiotech.com

Tech support:

support@everestbiotech.com

Tel: +44 (0)1869 238326

www.everestbiotech.com

**Research Use Only. Not for
diagnostic or therapeutic use.**

EB09694 - Goat Anti-PRPF6 Antibody

Size: 100µg specific antibody in 200µl



Target Protein

Principal Names: PRPF6, PRP6 pre-mRNA processing factor 6 homolog (*S. cerevisiae*), ANT-1, C20orf14, TOM, U5-102K, hPrp6, OTTHUMP00000031625, PRP6 pre-mRNA processing factor 6 homolog, U5 snRNP-associated 102 kDa protein, androgen receptor N-terminal domain transactivating protein-1, p102 U5 small nuclear ribonucleoprotein particle-binding protein, putative mitochondrial outer membrane protein import receptor

Official Symbol: PRPF6

Accession Number(s): NP_036601.2

Human GeneID(s): [24148](#)

Non-Human GeneID(s): 68879 (mouse), 366276 (rat)

Immunogen

Peptide with sequence C-TGENHTSVDPRQTQ, from the Internal region of the protein sequence according to NP_036601.2.

Please note the [peptide](#) is available for sale.

Purification and Storage

Purified from goat serum by ammonium sulphate precipitation followed by antigen affinity chromatography using the immunizing peptide.

Supplied at 0.5 mg/ml in Tris saline, 0.02% sodium azide, pH7.3 with 0.5% bovine serum albumin.

Aliquot and store at -20°C. Minimize freezing and thawing.

Applications Tested

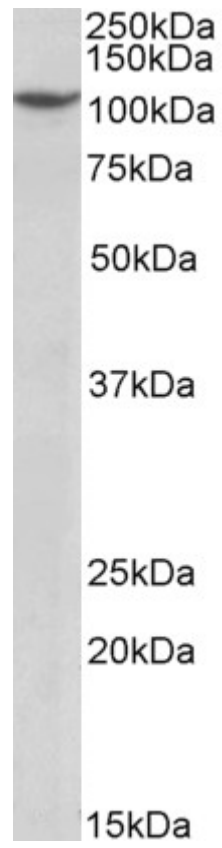
Peptide ELISA: antibody detection limit dilution 1:16000.

Western blot: Approx 110kDa band observed in nuclear lysates of cell line Jurkat (calculated MW of 107kDa according to NP_036601.2). Recommended concentration: 1-3µg/ml.

Species Reactivity

Tested: Human

Expected from sequence similarity: Human, Mouse, Rat, Dog, Cow



EB09694 (1 μ g/ml) staining of Jurkat nuclear lysate (35 μ g protein in RIPA buffer). Primary incubation was 1 hour.
Detected by chemiluminescence.