



UK Office

Everest Biotech Ltd

Cherwell Innovation Centre
77 Heyford Park
Upper Heyford
Oxfordshire
OX25 5HD
UK

Enquiries:

info@everestbiotech.com

Sales:

sales@everestbiotech.com

Tech support:

support@everestbiotech.com

Tel: +44 (0)1869 238326

www.everestbiotech.com

**Research Use Only. Not for
diagnostic or therapeutic use.**

EB08144 - Goat Anti-PRRX1 Antibody

Size: 100µg specific antibody in 200µl



Target Protein

Principal Names: PRRX1, paired related homeobox 1, PHOX1, PMX1, PRX1, homeobox protein PHOX1, paired mesoderm homeo box 1, paired mesoderm homeobox 1

Official Symbol: PRRX1

Accession Number(s): NP_008833.1; NP_073207.1

Human GeneID(s): [5396](#)

Important Comments: This antibody is expected to recognise both reported isoforms (NP_008833.1; NP_073207.1);

Immunogen

Peptide with sequence C-QADENVGEAGRS, from the internal region of the protein sequence according to NP_008833.1; NP_073207.1.

Please note the [peptide](#) is available for sale.

Purification and Storage

Purified from goat serum by ammonium sulphate precipitation followed by antigen affinity chromatography using the immunizing peptide.

Supplied at 0.5 mg/ml in Tris saline, 0.02% sodium azide, pH7.3 with 0.5% bovine serum albumin.

Aliquot and store at -20°C. Minimize freezing and thawing.

Applications Tested

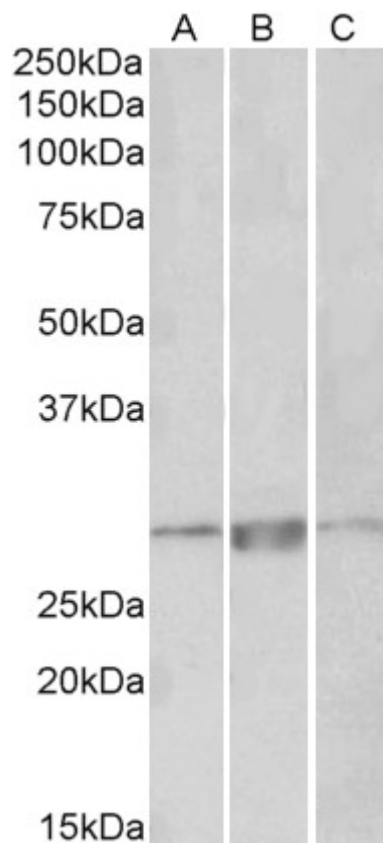
Peptide ELISA: antibody detection limit dilution 1:2000.

Western blot: Approx 28kDa band observed in Human, Mouse and Rat Heart lysates (calculated MW of 27.3kDa according to NP_073207.1). Recommended concentration: 1-3µg/ml.

Species Reactivity

Tested: Human, Mouse, Rat

Expected from sequence similarity: Human, Mouse, Rat



EB08144 (1 μ g/ml) staining of Human Heart lysate (35 μ g protein in RIPA buffer). Primary incubation was 1 hour.
Detected by chemiluminescence.