



UK Office

Everest Biotech Ltd

Cherwell Innovation Centre
77 Heyford Park
Upper Heyford
Oxfordshire
OX25 5HD
UK

Enquiries:

info@everestbiotech.com

Sales:

sales@everestbiotech.com

Tech support:

support@everestbiotech.com

Tel: +44 (0)1869 238326

www.everestbiotech.com

**Research Use Only. Not for
diagnostic or therapeutic use.**

EB07820 - Goat Anti-PRUNE2 / BMCC1 Antibody

Size: 100µg specific antibody in 200µl



Target Protein

Principal Names: PRUNE2, BMCC1, prune homolog 2 (Drosophila), RP11-214N16.3, A214N16.3, BNIPXL, C9orf65, DKFZp762K117, KIAA0367, RP11-58J3.2, bA214N16.3, BCH motif-containing molecule at the carboxyl terminal region 1, BNIP2 motif containing molecule at the carboxyl terminal region 1, prune homolog 2

Official Symbol: PRUNE2

Accession Number(s): NP_620173.1

Human GeneID(s): [158471](#)

Immunogen

Peptide with sequence C-MESEKISEKQEE, from the internal region of the protein sequence according to NP_620173.1.

Please note the [peptide](#) is available for sale.

Purification and Storage

Purified from goat serum by ammonium sulphate precipitation followed by antigen affinity chromatography using the immunizing peptide.

Supplied at 0.5 mg/ml in Tris saline, 0.02% sodium azide, pH7.3 with 0.5% bovine serum albumin.

Aliquot and store at -20°C. Minimize freezing and thawing.

Applications Tested

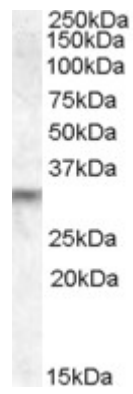
Peptide ELISA: antibody detection limit dilution 1:32000.

Western blot: Approx 30kDa band observed in Human Brain (Cerebellum) lysates (calculated MW of 29.5kDa according to NP_620173.1). Recommended concentration: 1-3µg/ml.

Species Reactivity

Tested: Human

Expected from sequence similarity: Human, Dog



EB07820 (1 μ g/ml) staining of Human Brain lysate (35 μ g protein in RIPA buffer). Primary incubation was 1 hour.
Detected by chemiluminescence.