



UK Office

Everest Biotech Ltd

Cherwell Innovation Centre
77 Heyford Park
Upper Heyford
Oxfordshire
OX25 5HD
UK

Enquiries:

info@everestbiotech.com

Sales:

sales@everestbiotech.com

Tech support:

support@everestbiotech.com

Tel: +44 (0)1869 238326

www.everestbiotech.com

**Research Use Only. Not for
diagnostic or therapeutic use.**

EB06893 - Goat Anti-PSA (isoform 1) / KLK3 Antibody

Size: 100µg specific antibody in 200µl



Target Protein

Principal Names: KLK3, APS, PSA, hK3, KLK2A1, kallikrein 3, (prostate specific antigen), seminin, P-30 antigen, semenogelase, gamma-seminoprotein, prostate specific antigen

Official Symbol: KLK3

Accession Number(s): NP_001639.1

Human GeneID(s): [354](#)

Important Comments: This antibody is expected to recognise isoform 1 (NP_001639.1) only.

Immunogen

Peptide with sequence C-TKVVHYRKWIKD, from the C Terminus of the protein sequence according to NP_001639.1.

Please note the [peptide](#) is available for sale.

Purification and Storage

Purified from goat serum by ammonium sulphate precipitation followed by antigen affinity chromatography using the immunizing peptide.

Supplied at 0.5 mg/ml in Tris saline, 0.02% sodium azide, pH7.3 with 0.5% bovine serum albumin.

Aliquot and store at -20°C. Minimize freezing and thawing.

Applications Tested

Peptide ELISA: antibody detection limit dilution 1:32000.

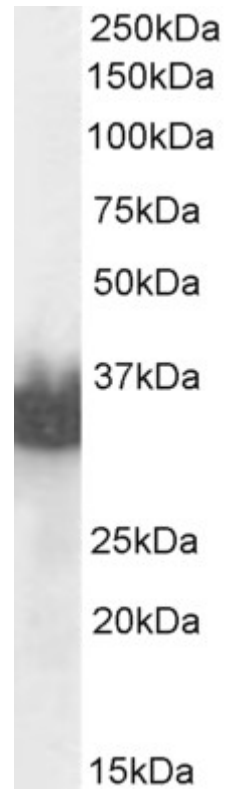
Western blot: Approx 30-35kDa band observed in Human Prostate lysates (calculated MW of 28.7kDa according to NP_001639.1). Recommended concentration: 0.003-0.01 µg/ml. Primary incubation 1 hour at room temperature.

IHC: Paraffin embedded Human Prostate. Recommended concentration: 2.5µg/ml.

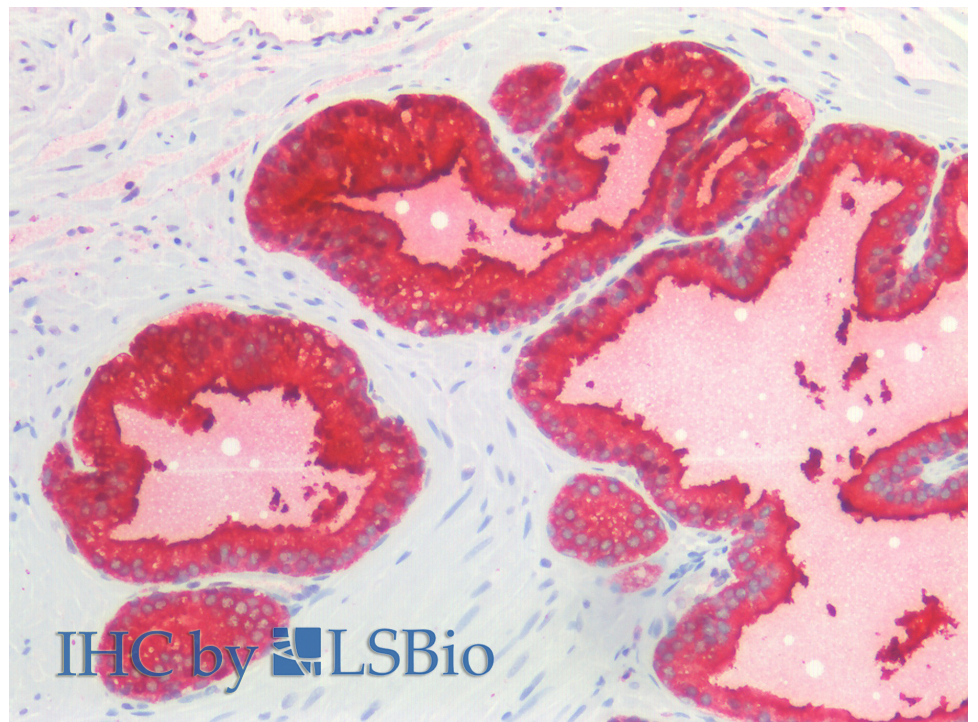
Species Reactivity

Tested: Human

Expected from sequence similarity: Human



EB06893 (0.01 μ g/ml) staining of Human Prostate lysate (35 μ g protein in RIPA buffer). Detected by chemiluminescence.



EB06893 (2.5 μ g/ml) staining of paraffin embedded Human Prostate. Steamed antigen retrieval with citrate buffer pH 6, AP-staining.