



## UK Office

### Everest Biotech Ltd

Cherwell Innovation Centre  
77 Heyford Park  
Upper Heyford  
Oxfordshire  
OX25 5HD  
UK

Enquiries:

[info@everestbiotech.com](mailto:info@everestbiotech.com)

Sales:

[sales@everestbiotech.com](mailto:sales@everestbiotech.com)

Tech support:

[support@everestbiotech.com](mailto:support@everestbiotech.com)

Tel: +44 (0)1869 238326

Fax: +44 (0)1869 238327

## US Office

### Everest Biotech c/o Abcore

405 Maple Street, Suite A106  
Ramona,  
CA 92065  
USA

Inquiries:

[info@everestbiotech.com](mailto:info@everestbiotech.com)

Sales:

[usasales@everestbiotech.com](mailto:usasales@everestbiotech.com)

Tech support:

[support@everestbiotech.com](mailto:support@everestbiotech.com)

Tel: 888-320-4628 (toll-free)

Fax: 888-841-9041

[www.everestbiotech.com](http://www.everestbiotech.com)

**Research Use Only. Not for  
diagnostic or therapeutic use.**

## EB06893 - Goat Anti-PSA (isoform 1) / KLK3 Antibody

Size: 100µg specific antibody in 200µl



### Target Protein

**Principal Names:** KLK3, APS, PSA, hK3, KLK2A1, kallikrein 3, (prostate specific antigen), seminin, P-30 antigen, semenogelase, gamma-seminoprotein, prostate specific antigen

**Official Symbol:** KLK3

**Accession Number(s):** NP\_001639.1

**Human GeneID(s):** [354](#)

**Important Comments:** This antibody is expected to recognise isoform 1 (NP\_001639.1) only.

### Immunogen

Peptide with sequence C-TKVVHYRKWIKD, from the C Terminus of the protein sequence according to NP\_001639.1.

Please note the [peptide](#) is available for sale.

### Purification and Storage

Purified from goat serum by ammonium sulphate precipitation followed by antigen affinity chromatography using the immunizing peptide.

Supplied at 0.5 mg/ml in Tris saline, 0.02% sodium azide, pH7.3 with 0.5% bovine serum albumin.

Aliquot and store at -20°C. Minimize freezing and thawing.

### Applications Tested

**Peptide ELISA:** antibody detection limit dilution 1:32000.

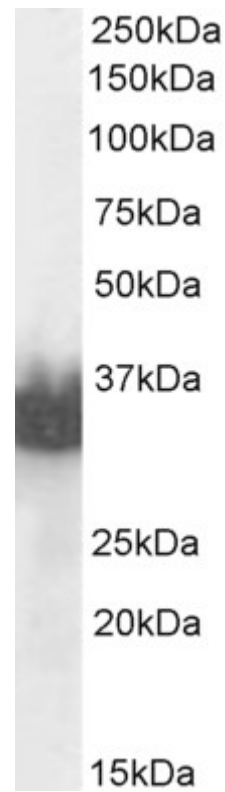
**Western blot:** Approx 30-35kDa band observed in Human Prostate lysates (calculated MW of 28.7kDa according to NP\_001639.1). Recommended concentration: 0.003-0.01 µg/ml. Primary incubation 1 hour at room temperature.

**IHC:** Paraffin embedded Human Prostate. Recommended concentration: 2.5µg/ml.

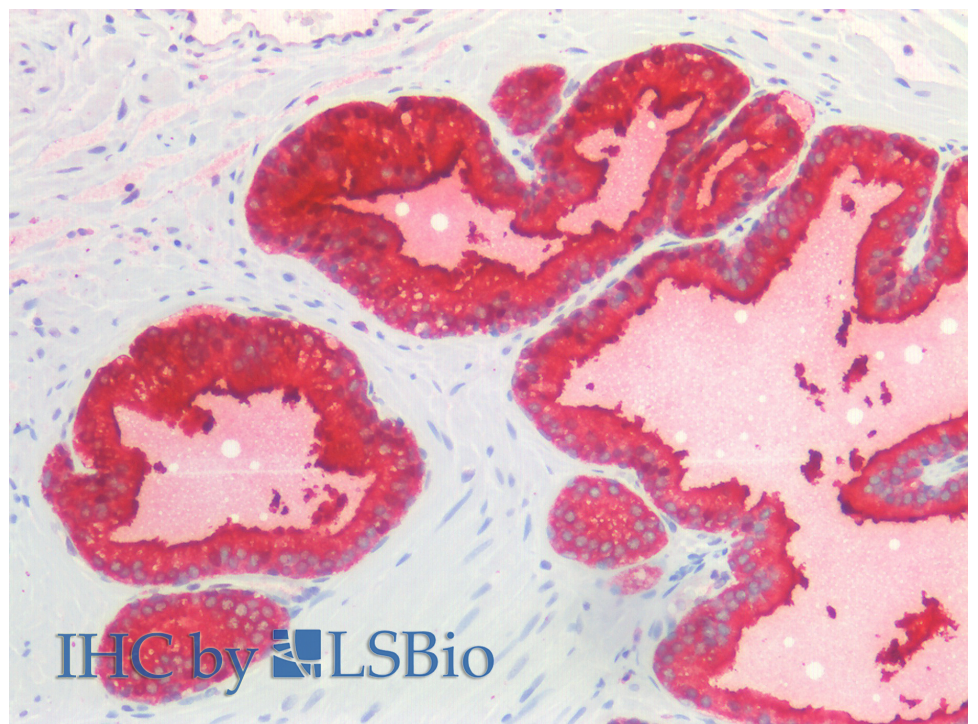
### Species Reactivity

**Tested:** Human

**Expected from sequence similarity:** Human



EB06893 (0.01 $\mu$ g/ml) staining of Human Prostate lysate (35 $\mu$ g protein in RIPA buffer). Detected by chemiluminescence.



EB06893 (2.5 $\mu$ g/ml) staining of paraffin embedded Human Prostate. Steamed antigen retrieval with citrate buffer pH 6, AP-staining.