



UK Office

Everest Biotech Ltd
Cherwell Innovation Centre
77 Heyford Park
Upper Heyford
Oxfordshire
OX25 5HD
UK

Enquiries:

info@everestbiotech.com

Sales:

sales@everestbiotech.com

Tech support:

support@everestbiotech.com

Tel: +44 (0)1869 238326

www.everestbiotech.com

**Research Use Only. Not for
diagnostic or therapeutic use.**

EB08994 - Goat Anti-PSCA (aa27-40) Antibody

Size: 100µg specific antibody in 200µl



Target Protein

Principal Names: PSCA, prostate stem cell antigen, PRO232

Official Symbol: PSCA

Accession Number(s): NP_005663.2

Human GeneID(s): [8000](#)

Immunogen

Peptide with sequence KAQVSNEDCLQVEN, from the internal region of the protein sequence according to NP_005663.2.

Please note the [peptide](#) is available for sale.

Purification and Storage

Purified from goat serum by ammonium sulphate precipitation followed by antigen affinity chromatography using the immunizing peptide.

Supplied at 0.5 mg/ml in Tris saline, 0.02% sodium azide, pH7.3 with 0.5% bovine serum albumin.

Aliquot and store at -20°C. Minimize freezing and thawing.

Applications Tested

Peptide ELISA: antibody detection limit dilution 1:1000.

Western blot: Preliminary testing showed a band at <15kDa in Human Colon lysate at a concentration of 2ug/ml (calculated Mwt.of 12.9kDa according to NP_005663.2). Primary incubation 1 hour at room temperature.

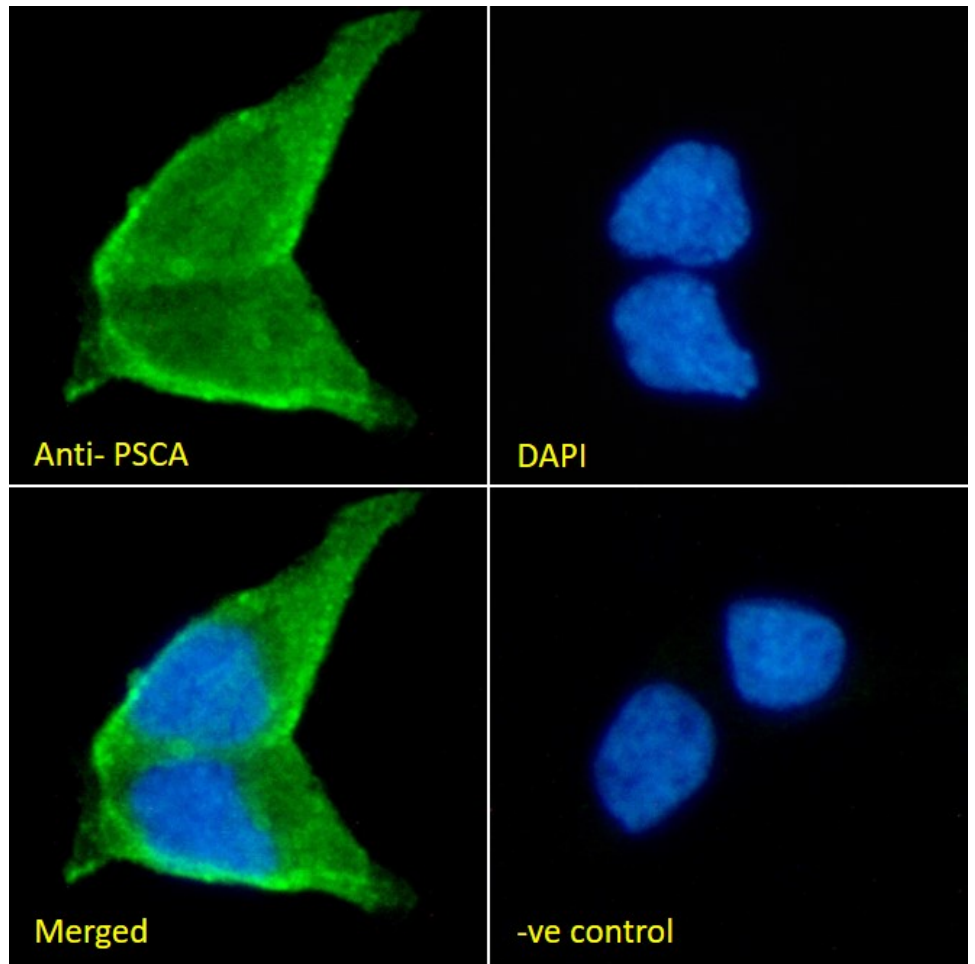
Immunofluorescence: Strong expression of the protein seen in the membranes of LNCaP cells. Recommended concentration: 10µg/ml.

Flow Cytometry: Flow cytometric analysis of LNCaP cells. Recommended concentration: 10ug/ml.

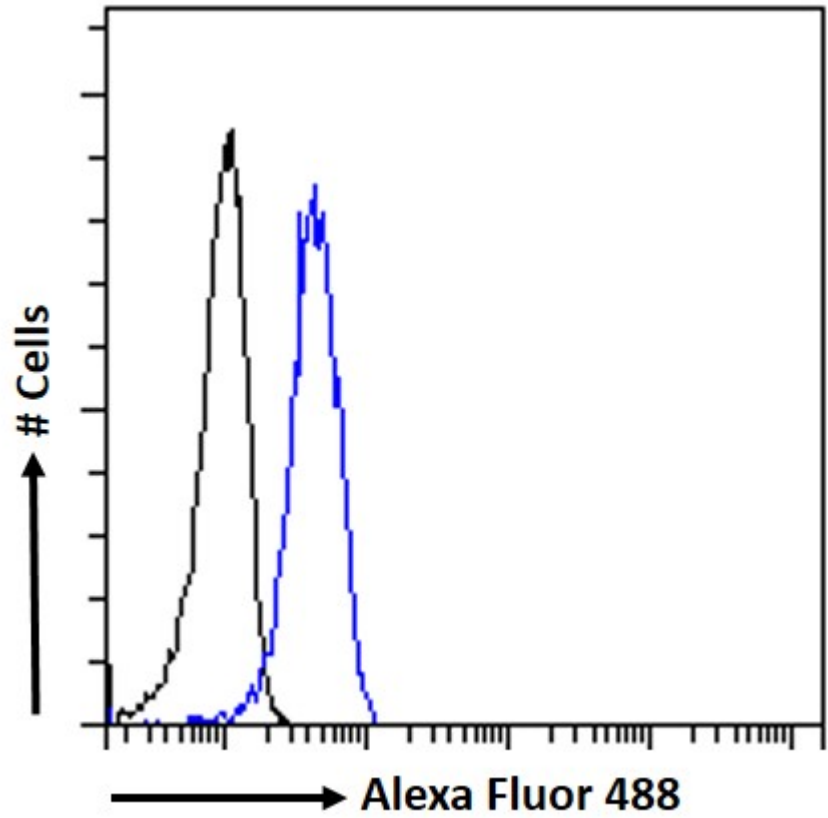
Species Reactivity

Tested: Human

Expected from sequence similarity: Human



EB08994 Immunofluorescence analysis of paraformaldehyde fixed LNCaP cells, permeabilized with 0.15% Triton. Primary incubation 1hr (10ug/ml) followed by Alexa Fluor 488 secondary antibody (2ug/ml), showing membrane staining. The nuclear stain is DAPI (blue). Negative control: Unimmunized goat IgG (10ug/ml) followed by Alexa Fluor 488 secondary antibody (2ug/ml).



EB08994 Flow cytometric analysis of paraformaldehyde fixed LNCaP cells (blue line), permeabilized with 0.5% Triton. Primary incubation 1hr (10ug/ml) followed by Alexa Fluor 488 secondary antibody (1ug/ml). IgG control: Unimmunized goat IgG (black line) followed by Alexa Fluor 488 secondary antibody.