



## UK Office

### Everest Biotech Ltd

Cherwell Innovation Centre  
77 Heyford Park  
Upper Heyford  
Oxfordshire  
OX25 5HD  
UK

Enquiries:

[info@everestbiotech.com](mailto:info@everestbiotech.com)

Sales:

[sales@everestbiotech.com](mailto:sales@everestbiotech.com)

Tech support:

[support@everestbiotech.com](mailto:support@everestbiotech.com)

Tel: +44 (0)1869 238326

[www.everestbiotech.com](http://www.everestbiotech.com)

**Research Use Only. Not for  
diagnostic or therapeutic use.**

## EB09523 - Goat Anti-PSF / SFPQ Antibody

Size: 100µg specific antibody in 200µl



### Target Protein

**Principal Names:** SFPQ, splicing factor proline/glutamine-rich (polypyrimidine tract binding protein associated), POMP100, PSF, OTTHUMP0000004329, PTB-associated splicing factor, polypyrimidine tract-binding protein-associated splicing factor, splicing factor proline/glutamine rich (polypyrimidine tract binding protein associated), splicing factor proline/glutamine rich (polypyrimidine tract-binding protein-associated)

**Official Symbol:** SFPQ

**Accession Number(s):** NP\_005057.1

**Human GeneID(s):** [6421](#)

**Non-Human GeneID(s):** 71514 (mouse), 252855 (rat)

### Immunogen

Peptide with sequence C-RGREEYEGPNKKPR, from the C Terminus of the protein sequence according to NP\_005057.1.

Please note the [peptide](#) is available for sale.

### Purification and Storage

Purified from goat serum by ammonium sulphate precipitation followed by antigen affinity chromatography using the immunizing peptide.

Supplied at 0.5 mg/ml in Tris saline, 0.02% sodium azide, pH7.3 with 0.5% bovine serum albumin.

Aliquot and store at -20°C. Minimize freezing and thawing.

### Applications Tested

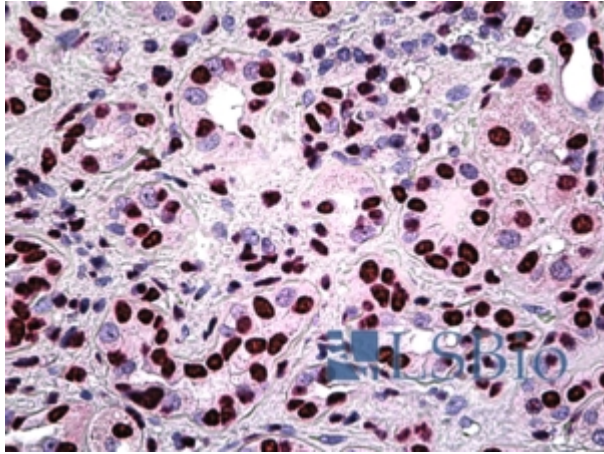
**Peptide ELISA:** antibody detection limit dilution 1:16000.

**IHC:** In paraffin embedded Human Kidney shows strong nuclear staining in PCT cells. Recommended concentration, 3-6µg/ml.

### Species Reactivity

**Tested:** Human

**Expected from sequence similarity:** Human, Mouse, Rat, Dog, Cow



EB09523 (3.8 $\mu$ g/ml) staining of paraffin embedded Human Kidney. Steamed antigen retrieval with citrate buffer pH 6, AP-staining.