

## UK Office

### Everest Biotech Ltd

Cherwell Innovation Centre  
77 Heyford Park  
Upper Heyford  
Oxfordshire  
OX25 5HD  
UK

Enquiries:

[info@everestbiotech.com](mailto:info@everestbiotech.com)

Sales:

[sales@everestbiotech.com](mailto:sales@everestbiotech.com)

Tech support:

[support@everestbiotech.com](mailto:support@everestbiotech.com)

Tel: +44 (0)1869 238326

[www.everestbiotech.com](http://www.everestbiotech.com)

**Research Use Only. Not for  
diagnostic or therapeutic use.**

## EB10277 - Goat Anti-PSMA4 Antibody

Size: 100µg specific antibody in 200µl



### Target Protein

**Principal Names:** HC9, HsT17706, macropain subunit C9, MGC111191, MGC12467, MGC24813, multicatalytic endopeptidase complex subunit C9, proteasome (prosome, macropain) subunit, alpha type, 4, proteasome alpha 4 subunit, proteasome component C9, proteasome subun, PSC9, PSMA4

**Official Symbol:** PSMA4

**Accession Number(s):** NP\_002780.1; NP\_001096138.1

**Human GeneID(s):** [5685](#)

**Non-Human GeneID(s):** 26441 (mouse), 29671 (rat)

**Important Comments:** This antibody is expected to recognize both reported isoforms (NP\_002780.1; NP\_001096138.1). Reported variants represent identical protein: NP\_002780.1, NP\_001096137.1

### Immunogen

Peptide with sequence C-SDANVLTNELR, from the internal region of the protein sequence according to NP\_002780.1; NP\_001096138.1.

Please note the [peptide](#) is available for sale.

### Purification and Storage

Purified from goat serum by ammonium sulphate precipitation followed by antigen affinity chromatography using the immunizing peptide.

Supplied at 0.5 mg/ml in Tris saline, 0.02% sodium azide, pH7.3 with 0.5% bovine serum albumin.

Aliquot and store at -20°C. Minimize freezing and thawing.

### Applications Tested

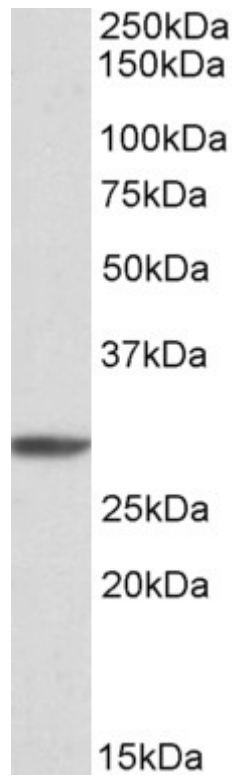
**Peptide ELISA:** antibody detection limit dilution 1:4000.

**Western blot:** Approx 28kDa band observed in lysates of cell lines K562, NIH3T3 and in lysates of Human Tonsil, Human Peripheral Blood Mononucleocytes and in Mouse and Rat Spleen (calculated MW of 29.5kDa according to NP\_002780.1). Recommended concentration: 0.3-1µg/ml.

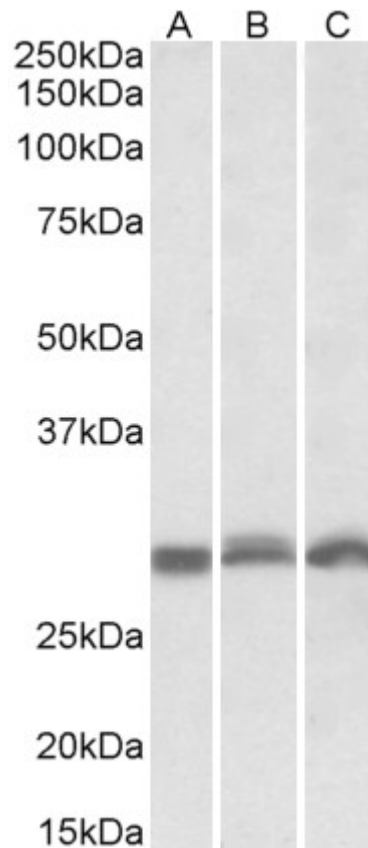
### Species Reactivity

**Tested:** Human, Mouse, Rat

**Expected from sequence similarity:** Human, Mouse, Rat, Dog



EB010277 (1µg/ml) staining of K562 cell lysate (35µg protein in RIPA buffer). Primary incubation was 1 hour. Detected by chemiluminescence.



EB010277 (0.3µg/ml) staining of NIH3T3 (A), Mouse Spleen (B), Rat Spleen (C) lysates (35µg protein in RIPA buffer). Primary incubation was 1 hour. Detected by chemiluminescence.