



UK Office

Everest Biotech Ltd

Cherwell Innovation Centre
77 Heyford Park
Upper Heyford
Oxfordshire
OX25 5HD
UK

Enquiries:

info@everestbiotech.com

Sales:

sales@everestbiotech.com

Tech support:

support@everestbiotech.com

Tel: +44 (0)1869 238326

www.everestbiotech.com

**Research Use Only. Not for
diagnostic or therapeutic use.**

EB10294 - Goat Anti-PSMB3 Antibody

Size: 100µg specific antibody in 200µl



Target Protein

Principal Names: HC10-II, MGC4147, proteasome (prosome, macropain) subunit, beta type, 3, proteasome beta 3 subunit, proteasome chain 13, proteasome component C10-II, proteasome theta chain, PSMB3

Official Symbol: PSMB3

Accession Number(s): NP_002786.2

Human GeneID(s): [5691](#)

Non-Human GeneID(s): 26446 (mouse), 29676 (rat)

Immunogen

Peptide with sequence C-NLYELKEGRQ, from the internal region of the protein sequence according to NP_002786.2.

Please note the [peptide](#) is available for sale.

Purification and Storage

Purified from goat serum by ammonium sulphate precipitation followed by antigen affinity chromatography using the immunizing peptide.

Supplied at 0.5 mg/ml in Tris saline, 0.02% sodium azide, pH7.3 with 0.5% bovine serum albumin.

Aliquot and store at -20°C. Minimize freezing and thawing.

Applications Tested

Peptide ELISA: antibody detection limit dilution 1:16000.

Western blot: Approx 24kDa band observed in lysates of cell line K562 (calculated MW of 22.9kDa according to NP_002786.2). Recommended concentration: 1-3µg/ml.

IHC: Paraffin embedded Human Lung. Recommended concentration: 10µg/ml.

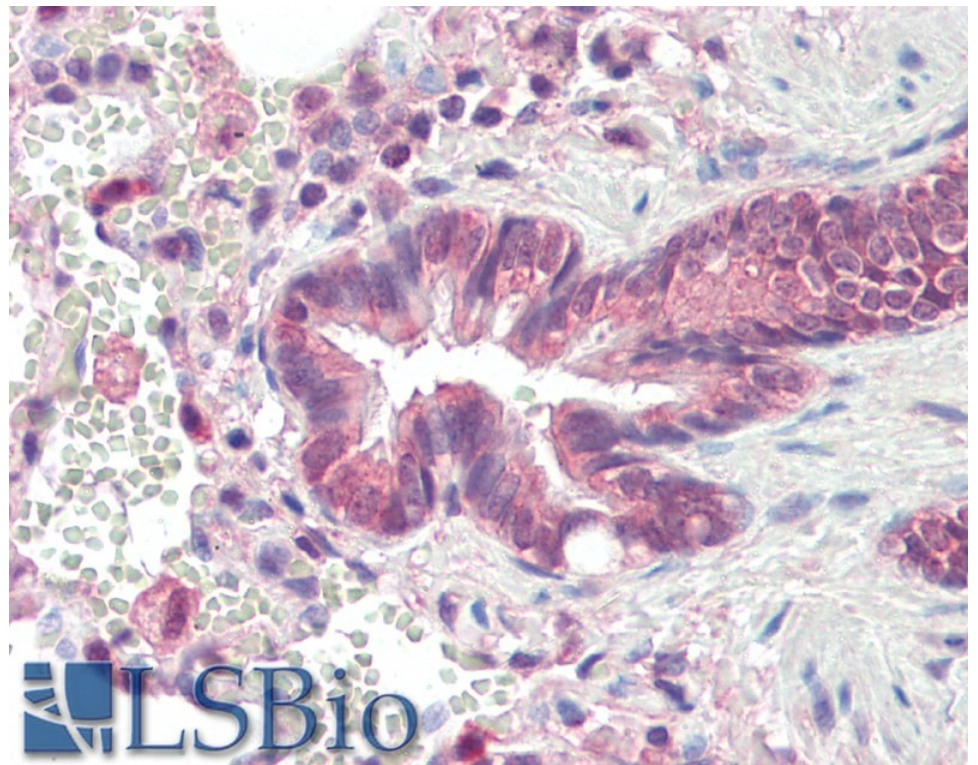
Species Reactivity

Tested: Human

Expected from sequence similarity: Human, Mouse, Rat, Dog, Cow, Pig



EB10294 (1 μ g/ml) staining of K562 lysate (35 μ g protein in RIPA buffer). Primary incubation was 1 hour. Detected by chemiluminescence.



EB10294 (10 μ g/ml) staining of paraffin embedded Human Lung. Steamed antigen retrieval with citrate buffer pH 6, AP-staining.