

## UK Office

### Everest Biotech Ltd

Cherwell Innovation Centre  
77 Heyford Park  
Upper Heyford  
Oxfordshire  
OX25 5HD  
UK

Enquiries:

[info@everestbiotech.com](mailto:info@everestbiotech.com)

Sales:

[sales@everestbiotech.com](mailto:sales@everestbiotech.com)

Tech support:

[support@everestbiotech.com](mailto:support@everestbiotech.com)

Tel: +44 (0)1869 238326

[www.everestbiotech.com](http://www.everestbiotech.com)

**Research Use Only. Not for  
diagnostic or therapeutic use.**

## EB10296 - Goat Anti-PSMB4 (aa230-239) Antibody

Size: 100µg specific antibody in 200µl



### Target Protein

**Principal Names:** HN3, HsN3, macropain beta chain, multicatalytic endopeptidase complex beta chain, PROS26, proteasome (prosome, macropain) subunit, beta type, 4, proteasome beta 4 subunit, proteasome beta chain, proteasome chain 3, proteasome subunit HsN3, PSMB4

**Official Symbol:** PSMB4

**Accession Number(s):** NP\_002787.2

**Human GeneID(s):** [5692](#)

**Non-Human GeneID(s):** 19172 (mouse), 58854 (rat)

### Immunogen

Peptide with sequence C-NRFQIATVTE, from the internal region of the protein sequence according to NP\_002787.2.

Please note the [peptide](#) is available for sale.

### Purification and Storage

Purified from goat serum by ammonium sulphate precipitation followed by antigen affinity chromatography using the immunizing peptide.

Supplied at 0.5 mg/ml in Tris saline, 0.02% sodium azide, pH7.3 with 0.5% bovine serum albumin.

Aliquot and store at -20°C. Minimize freezing and thawing.

### Applications Tested

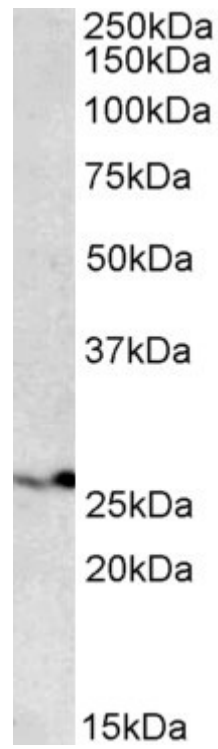
**Peptide ELISA:** antibody detection limit dilution 1:8000.

**Western blot:** Approx 25-26kDa band observed in lysates of cell lines HEK293, HeLa, and K562 and in Mouse and Rat Liver lysates (calculated MW of 29.1kDa according to NP\_002787.2). This molecular weight is routinely observed by other sources. Recommended concentration: 0.1-0.3µg/ml.

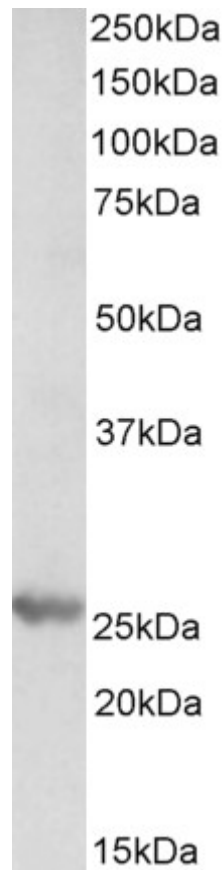
### Species Reactivity

**Tested:** Human, Mouse, Rat

**Expected from sequence similarity:** Human, Mouse, Rat, Dog, Cow



EB10296 (0.1 $\mu$ g/ml) staining of HEK293 lysate (35 $\mu$ g protein in RIPA buffer). Primary incubation was 1 hour.  
Detected by chemiluminescence.



EB10296 (0.3 $\mu$ g/ml) staining of Mouse Liver lysate (35 $\mu$ g protein in RIPA buffer). Primary incubation was 1 hour.  
Detected by chemiluminescence.