

## UK Office

### Everest Biotech Ltd

Cherwell Innovation Centre  
77 Heyford Park  
Upper Heyford  
Oxfordshire  
OX25 5HD  
UK

Enquiries:

[info@everestbiotech.com](mailto:info@everestbiotech.com)

Sales:

[sales@everestbiotech.com](mailto:sales@everestbiotech.com)

Tech support:

[support@everestbiotech.com](mailto:support@everestbiotech.com)

Tel: +44 (0)1869 238326

[www.everestbiotech.com](http://www.everestbiotech.com)

**Research Use Only. Not for  
diagnostic or therapeutic use.**

## EB10295 - Goat Anti-PSMB4 Antibody

Size: 100µg specific antibody in 200µl



### Target Protein

**Principal Names:** HN3, HsN3, macropain beta chain, multicatalytic endopeptidase complex beta chain, PROS26, proteasome (prosome, macropain) subunit, beta type, 4, proteasome beta 4 subunit, proteasome beta chain, proteasome chain 3, proteasome subunit HsN3, PSMB4

**Official Symbol:** PSMB4

**Accession Number(s):** NP\_002787.2

**Human GeneID(s):** [5692](#)

**Non-Human GeneID(s):** 19172 (mouse), 58854 (rat)

### Immunogen

Peptide with sequence C-QIATVTEKGVE, from the internal region of the protein sequence according to NP\_002787.2.

Please note the [peptide](#) is available for sale.

### Purification and Storage

Purified from goat serum by ammonium sulphate precipitation followed by antigen affinity chromatography using the immunizing peptide.

Supplied at 0.5 mg/ml in Tris saline, 0.02% sodium azide, pH7.3 with 0.5% bovine serum albumin.

Aliquot and store at -20°C. Minimize freezing and thawing.

### Applications Tested

**Peptide ELISA:** antibody detection limit dilution 1:16000.

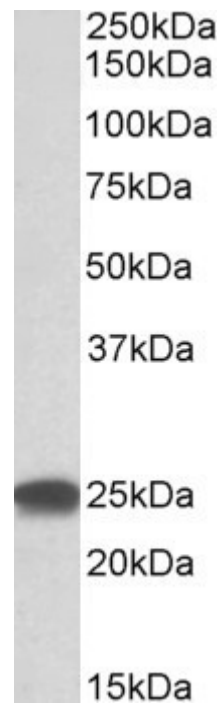
**Western blot:** Approx 25kDa band observed in lysates of cell lines NIH3T3, HEK293, HeLa, Jurkat and K562 (calculated MW of the mature protein 24.3kDa according to aa46-264 of NP\_002787.2). Recommended concentration: 0.3-1µg/ml. Primary incubation was 1 hour.

**IHC:** Paraffin embedded Human Skin. Recommended concentration: 3.75µg/ml.

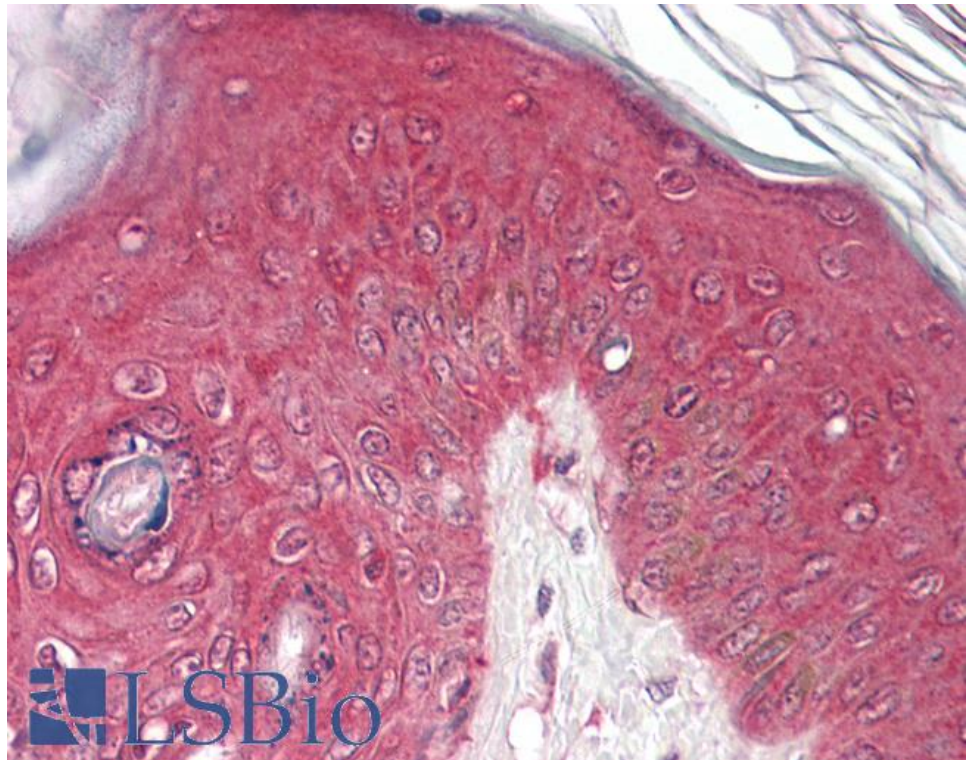
### Species Reactivity

**Tested:** Human, Mouse

**Expected from sequence similarity:** Human, Mouse, Rat, Dog, Cow



EB10295 (0.3 $\mu$ g/ml) staining of HEK293 lysate (35 $\mu$ g protein in RIPA buffer). Detected by chemiluminescence.



EB10295 (3.75 $\mu$ g/ml) staining of paraffin embedded Human Skin. Steamed antigen retrieval with citrate buffer Ph 6, AP-staining.