

## UK Office

### Everest Biotech Ltd

Cherwell Innovation Centre  
77 Heyford Park  
Upper Heyford  
Oxfordshire  
OX25 5HD  
UK

Enquiries:

[info@everestbiotech.com](mailto:info@everestbiotech.com)

Sales:

[sales@everestbiotech.com](mailto:sales@everestbiotech.com)

Tech support:

[support@everestbiotech.com](mailto:support@everestbiotech.com)

Tel: +44 (0)1869 238326

[www.everestbiotech.com](http://www.everestbiotech.com)

**Research Use Only. Not for  
diagnostic or therapeutic use.**

## EB07761 - Goat Anti-PSME1 (isoform 1) Antibody

Size: 100µg specific antibody in 200µl



### Target Protein

**Principal Names:** PSME1, proteasome (prosome, macropain) activator subunit 1 (PA28 alpha), IFI5111, MGC8628, PA28A, PA28alpha, REGalpha, 11S regulator complex alpha subunit, 29-kD MCP activator subunit, activator of multicatalytic protease subunit 1, interferon gamma up-regulated I-5111 protein, interferon-gamma IEF SSP 5111, interferon-gamma-inducible protein 5111, proteasome activator subunit 1, proteasome activator subunit-1

**Official Symbol:** PSME1

**Accession Number(s):** NP\_006254.1

**Human GeneID(s):** [5720](#)

**Non-Human GeneID(s):** 19186 (mouse), 29630 (rat)

**Important Comments:** This antibody is expected to recognise isoform 1 (NP\_006254.1).

### Immunogen

Peptide with sequence C-KNFEKCLKKPRGETK, from the C Terminus of the protein sequence according to NP\_006254.1.

Please note the [peptide](#) is available for sale.

### Purification and Storage

Purified from goat serum by ammonium sulphate precipitation followed by antigen affinity chromatography using the immunizing peptide.

Supplied at 0.5 mg/ml in Tris saline, 0.02% sodium azide, pH7.3 with 0.5% bovine serum albumin.

Aliquot and store at -20°C. Minimize freezing and thawing.

### Applications Tested

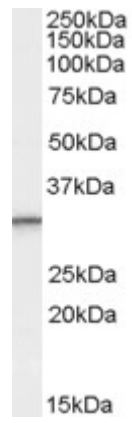
**Peptide ELISA:** antibody detection limit dilution 1:64000.

**Western blot:** Approx 30kDa band observed in Human Lymph Node, Spleen, Tonsil and Peripheral Blood Mononucleocyte lysates (calculated MW of 28.7kDa according to NP\_006254.1). Recommended concentration: 0.3-1µg/ml.

### Species Reactivity

**Tested:** Human

**Expected from sequence similarity:** Human, Mouse, Rat, Dog



EB07761 (0.3 $\mu$ g/ml) staining of Human Peripheral Blood Mononucleocyte lysate (35 $\mu$ g protein in RIPA buffer).  
Primary incubation was 1 hour. Detected by chemiluminescence.