

UK Office

Everest Biotech Ltd

Cherwell Innovation Centre
77 Heyford Park
Upper Heyford
Oxfordshire
OX25 5HD
UK

Enquiries:

info@everestbiotech.com

Sales:

sales@everestbiotech.com

Tech support:

support@everestbiotech.com

Tel: +44 (0)1869 238326

www.everestbiotech.com

**Research Use Only. Not for
diagnostic or therapeutic use.**

EB07762 - Goat Anti-PSME2 Antibody

Size: 100µg specific antibody in 200µl



Target Protein

Principal Names: PSME2, proteasome (prosome, macropain) activator subunit 2 (PA28 beta), PA28B, PA28beta, REGbeta, 11S regulator complex beta subunit, MCP activator, 31-kD subunit, activator of multicatalytic protease subunit 2, cell migration-inducing protein 22, proteasome activator 28-beta, proteasome activator hPA28 subunit beta, proteasome activator subunit 2

Official Symbol: PSME2

Accession Number(s): NP_002809.2

Human GeneID(s): [5721](#)

Non-Human GeneID(s): 19188 (mouse), 29614 (rat)

Immunogen

Peptide with sequence C-NLEKIVNPKGEEKP, from the C Terminus of the protein sequence according to NP_002809.2.

Please note the [peptide](#) is available for sale.

Purification and Storage

Purified from goat serum by ammonium sulphate precipitation followed by antigen affinity chromatography using the immunizing peptide.

Supplied at 0.5 mg/ml in Tris saline, 0.02% sodium azide, pH7.3 with 0.5% bovine serum albumin.

Aliquot and store at -20°C. Minimize freezing and thawing.

Applications Tested

Peptide ELISA: antibody detection limit dilution 1:32000.

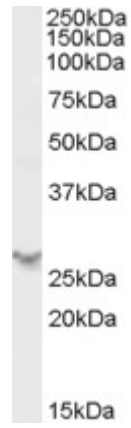
Western blot: Approx 27kDa band observed in Human Spleen lysates (calculated MW of 27.4kDa according to NP_002809.2). Recommended concentration: 0.5-1µg/ml.

IHC: Paraffin embedded Human Spleen. Recommended concentration: 5µg/ml.

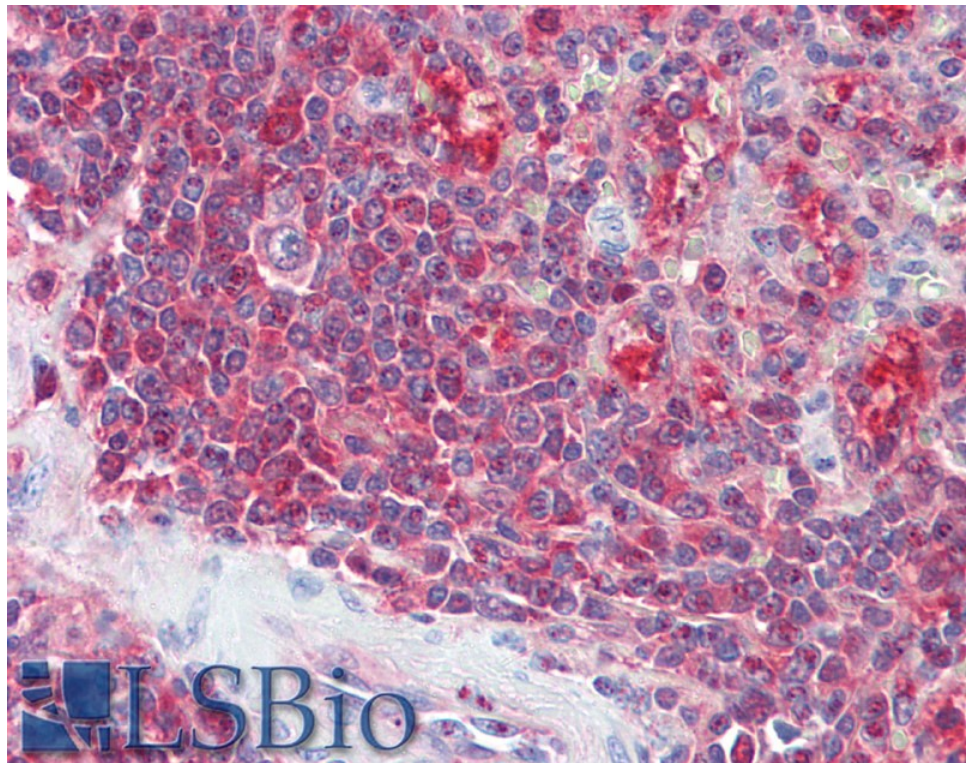
Species Reactivity

Tested: Human

Expected from sequence similarity: Human, Mouse, Rat, Dog



EB07762 (0.5 μ g/ml) staining of Human Spleen lysate (35 μ g protein in RIPA buffer). Primary incubation was 1 hour. Detected by chemiluminescence.



EB07762 (5 μ g/ml) staining of paraffin embedded Human Spleen. Steamed antigen retrieval with citrate buffer pH 6, AP-staining.