



International Office

Everest Biotech Ltd

Vector Laboratories, Inc.
6737 Mowry Ave
Newark, CA 94560
United States

Customer Service:

customerservice@vectorlabs.com

Technical Service:

technical@vectorlabs.com

Tel: +1 (800) 227-6666

www.everestbiotech.com

**Research Use Only. Not for
diagnostic or therapeutic use.**

EB09299 - Goat Anti-PSPH Antibody

Size: 100µg specific antibody in 200µl



Target Protein

Principal Names: PSPH, phosphoserine phosphatase, PSP, L-3-phosphoserine phosphatase, O-phosphoserine phosphohydrolase, OTTHUMP00000025059, PSPase

Official Symbol: PSPH

Accession Number(s): NP_004568.2

Human GeneID(s): [5723](#)

Non-Human GeneID(s): 100678 (mouse), 304429 (rat)

Immunogen

Peptide with sequence C-RQQVKDNAKWYITD, from the C Terminus of the protein sequence according to NP_004568.2.

Please note the [peptide](#) is available for sale.

Purification and Storage

Purified from goat serum by ammonium sulphate precipitation followed by antigen affinity chromatography using the immunizing peptide.

Supplied at 0.5 mg/ml in Tris saline, 0.02% sodium azide, pH7.3 with 0.5% bovine serum albumin.

Aliquot and store at -20°C. Minimize freezing and thawing.

Applications Tested

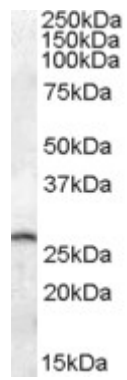
Peptide ELISA: antibody detection limit dilution 1:32000.

Western blot: Approx 26kDa band observed in Human Brain (Hippocampus) and in Mouse brain lysates (calculated MW of 25.0kDa according to Human NP_004568.2 and 25.1kDa according to Mouse NP_598661.1). Recommended concentration: 0.05-1µg/ml.

Species Reactivity

Tested: Human, Mouse

Expected from sequence similarity: Human, Mouse, Rat,



EB09299 (0.05µg/ml) staining of Mouse Brain lysate (35µg protein in RIPA buffer). Primary incubation was 1 hour. Detected by chemiluminescence.