

UK Office

Everest Biotech Ltd

Cherwell Innovation Centre
77 Heyford Park
Upper Heyford
Oxfordshire
OX25 5HD
UK

Enquiries:

info@everestbiotech.com

Sales:

sales@everestbiotech.com

Tech support:

support@everestbiotech.com

Tel: +44 (0)1869 238326

www.everestbiotech.com

**Research Use Only. Not for
diagnostic or therapeutic use.**

EB08108 - Goat Anti-PTBP2 Antibody

Size: 100µg specific antibody in 200µl



Target Protein

Principal Names: PTBP2, polypyrimidine tract binding protein 2, FLJ34897, MIBP, PTB, PTBLP, brPTB, nPTB, nPTB5, nPTB6, nPTB7, nPTB8, PTB-like, neural polypyrimidine tract binding protein, splicing regulator

Official Symbol: PTBP2

Accession Number(s): NP_001287914.1; NP_001287915.1; NP_001287916.1; NP_001287917.1; NP_001287918.1; NP_067013.1 ;

Human GeneID(s): [58155](#)

Non-Human GeneID(s): 56195 (mouse), 310820 (rat)

Important Comments: This antibody is expected to recognise NP_001287914.1 (isoform 1), NP_001287915.1 (isoform 2), NP_001287916.1 (isoform 3), NP_001287917.1 (isoform 4), NP_001287918.1 (isoform 5), and NP_067013.1 (isoform 6).

Immunogen

Peptide with sequence C-SKKFKGEDKMD, from the internal region of the protein sequence according to NP_001287914.1; NP_001287915.1; NP_001287916.1; NP_001287917.1; NP_001287918.1; NP_067013.1 ;

Please note the [peptide](#) is available for sale.

Purification and Storage

Purified from goat serum by ammonium sulphate precipitation followed by antigen affinity chromatography using the immunizing peptide.

Supplied at 0.5 mg/ml in Tris saline, 0.02% sodium azide, pH7.3 with 0.5% bovine serum albumin.

Aliquot and store at -20°C. Minimize freezing and thawing.

Applications Tested

Peptide ELISA: antibody detection limit dilution 1:1000.

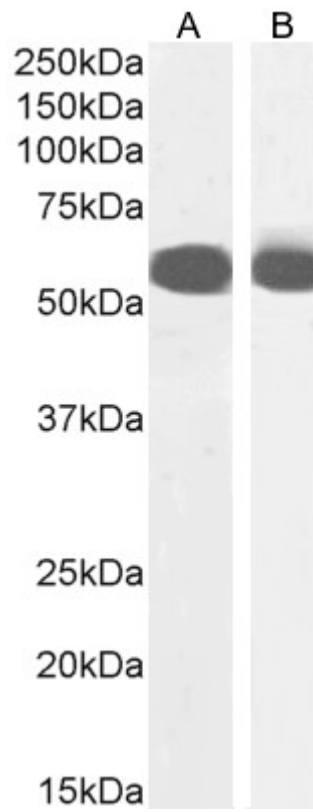
Western blot: Approx 55-60kDa band observed in Mouse Testis lysates and in nuclear lysates of cell line NIH3T3, and approx 55kDa in preliminary testing at Rat testes lysate (calculated MW of 57.6kDa according to Mouse NP_062423.1 and 57.5kDa according to NP_001297640.1). Recommended concentration: 2-3µg/ml. Primary incubation 1 hour at room temperature.

Immunofluorescence: Strong expression of the protein seen in the nuclei of A431 cells. Recommended concentration: 10µg/ml.

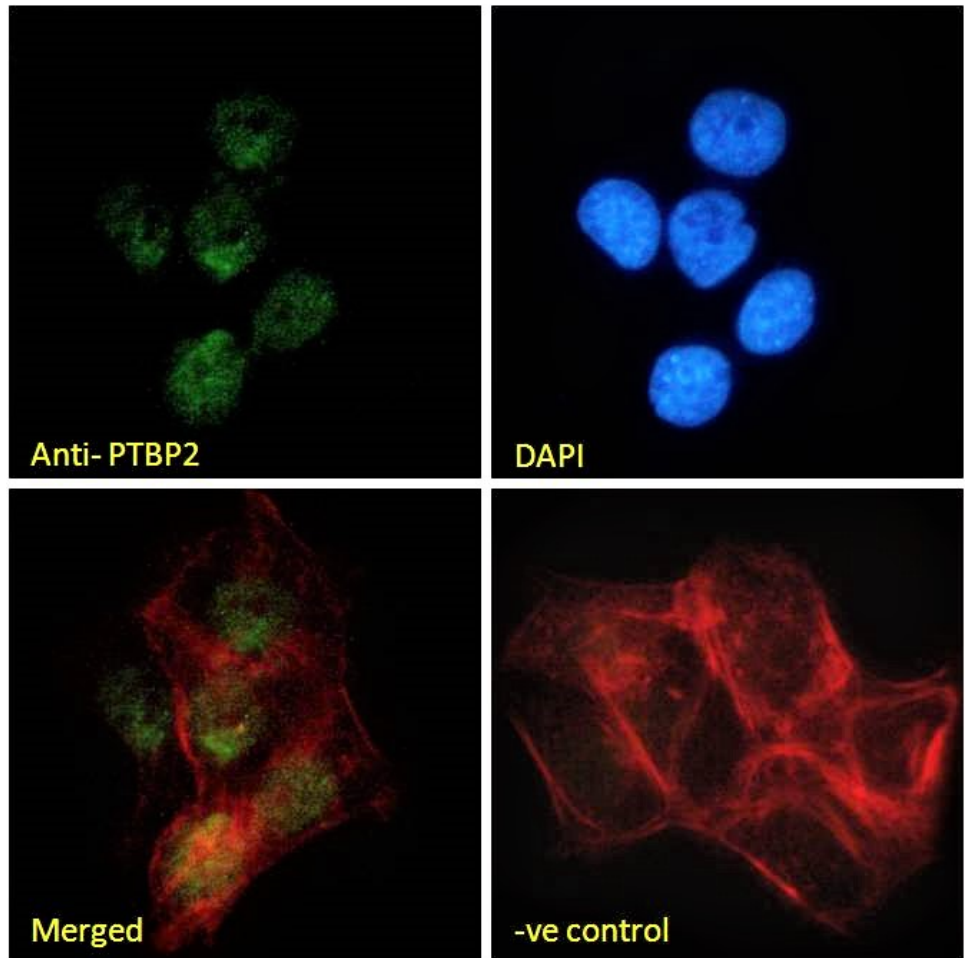
Species Reactivity

Tested: Human, Mouse

Expected from sequence similarity: Human, Mouse, Rat, Cow



EB08108 (3ug/ml) staining of Mouse Testes (A) lysate and nuclear NIH3T3 (B) cell lysate (35µg protein in RIPA buffer). Detected by chemiluminescence.



EB08108 Immunofluorescence analysis of paraformaldehyde fixed A431 cells, permeabilized with 0.15% Triton. Primary incubation 1hr (10ug/ml) followed by Alexa Fluor 488 secondary antibody (2ug/ml), showing nuclear staining. Actin filaments were stained with phalloidin (red) and the nuclear stain is DAPI (blue). Negative control: Unimmunized goat IgG (10ug/ml) followed by Alexa Fluor 488 secondary antibody (2ug/ml).