

International Office

Everest Biotech Ltd

Vector Laboratories, Inc.
6737 Mowry Ave
Newark, CA 94560
United States

Customer Service:

customerservice@vectorlabs.com

Technical Service:

technical@vectorlabs.com

Tel: +1 (800) 227-6666

www.everestbiotech.com

**Research Use Only. Not for
diagnostic or therapeutic use.**

EB07312 - Goat Anti-PTCH (Internal) Antibody

Size: 100µg specific antibody in 200µl



Target Protein

Principal Names: PTCH, patched homolog (Drosophila), RP11-435O5.3, BCNS, FLJ42602, HPE7, NBCCS, PTC, PTC1, PTCH1, PTCH protein +12b, PTCH protein +41, PTCH protein -10, patched, patched (Drosophila) homolog

Official Symbol: PTCH1

Accession Number(s): NP_000255.2; NP_001077072.1; NP_001077071.1; NP_001077075.1

Human GeneID(s): [5727](#)

Important Comments: This antibody is expected to recognise all four reported isoforms (NP_000255.2; NP_001077072.1; NP_001077071.1; NP_001077075.1). Reported variants represent identical protein (NP_001077075.1; NP_001077076.1; NP_001077073.1; NP_001077074.1).

Immunogen

Peptide with sequence C-HPESRHHPPSNPRQQ, from the internal region of the protein sequence according to NP_000255.2; NP_001077072.1; NP_001077071.1; NP_001077075.1.

Please note the [peptide](#) is available for sale.

Purification and Storage

Purified from goat serum by ammonium sulphate precipitation followed by antigen affinity chromatography using the immunizing peptide.

Supplied at 0.5 mg/ml in Tris saline, 0.02% sodium azide, pH7.3 with 0.5% bovine serum albumin.

Aliquot and store at -20°C. Minimize freezing and thawing.

Applications Tested

Peptide ELISA: antibody detection limit dilution 1:32000.

Western blot: Approx 150kDa band observed in Human Brain lysates (calculated MW of 153.9kDa according to NP_001077071.1). Recommended concentration: 1-3µg/ml.

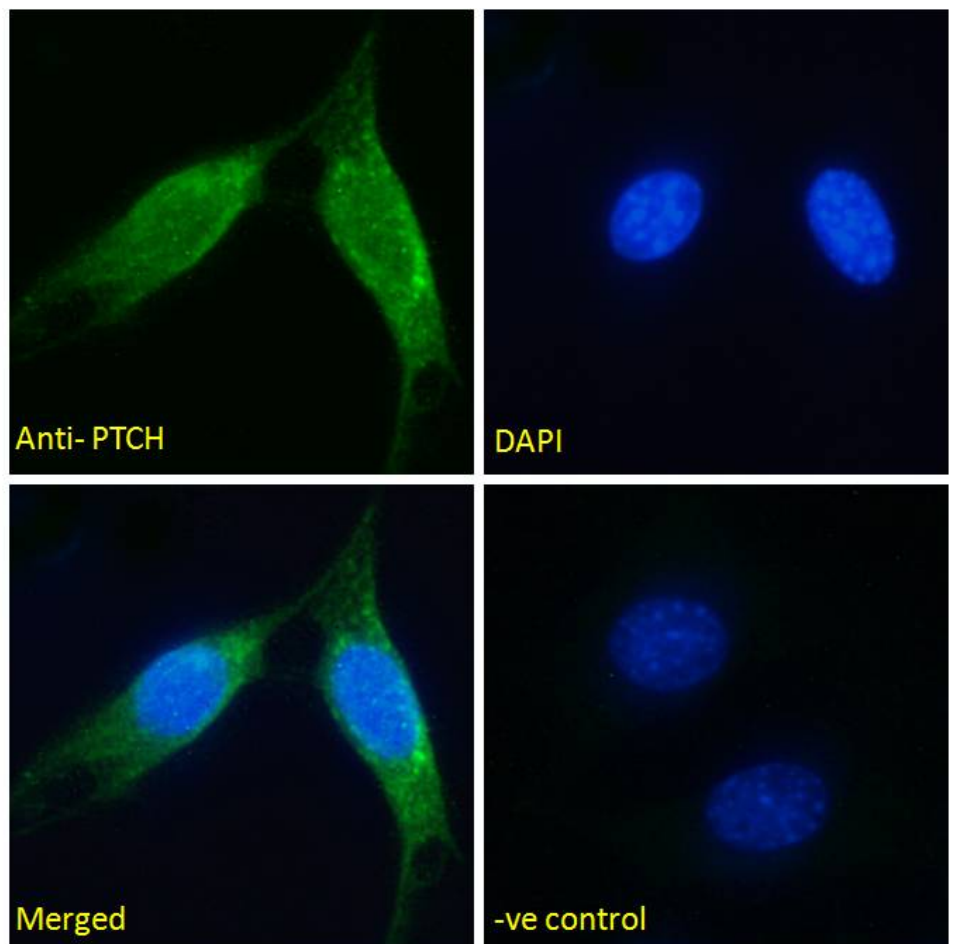
Primary incubation 1 hour at room temperature.

Immunofluorescence : Expression of the protein seen in the Golgi/membrane of NIH3T3 cells. Recommended concentration: 5µg/ml.

Species Reactivity

Tested: Human, Mouse

Expected from sequence similarity: Human, Dog, Pig, Cow



EB07312 Immunofluorescence analysis of paraformaldehyde fixed NIH3T3 cells, permeabilized with 0.15% Triton. Primary incubation 1hr (5ug/ml) followed by Alexa Fluor 488 secondary antibody (2ug/ml), showing Golgi/membrane staining. The nuclear stain is DAPI (blue). Negative control: Unimmunized goat IgG (5ug/ml) followed by Alexa Fluor 488 secondary antibody (2ug/ml).



EB07312 (1µg/ml) staining of Human Brain lysate (35µg protein in RIPA buffer). Detected by chemiluminescence.