

## UK Office

### Everest Biotech Ltd

Cherwell Innovation Centre  
77 Heyford Park  
Upper Heyford  
Oxfordshire  
OX25 5HD  
UK

Enquiries:

[info@everestbiotech.com](mailto:info@everestbiotech.com)

Sales:

[sales@everestbiotech.com](mailto:sales@everestbiotech.com)

Tech support:

[support@everestbiotech.com](mailto:support@everestbiotech.com)

Tel: +44 (0)1869 238326

[www.everestbiotech.com](http://www.everestbiotech.com)

**Research Use Only. Not for  
diagnostic or therapeutic use.**

## EB10888 - Goat Anti-PTCH1 (aa266-280) Antibody

Size: 100µg specific antibody in 200µl



### Target Protein

**Principal Names:** PTCH1, patched 1, BCNS, FLJ26746, FLJ42602, HPE7, NBCCS, PTC, PTC1, PTCH11, OTTHUMP00000021709, OTTHUMP00000021710, PTCH protein +12b, PTCH protein +4', PTCH protein -10, patched homolog 1, protein patched homolog 1

**Official Symbol:** PTCH1

**Accession Number(s):** NP\_000255.2; NP\_001077072.1; NP\_001077071.1; NP\_001077073.1

**Human GeneID(s):** [5727](#)

**Non-Human GeneID(s):** 19206 (mouse), 89830 (rat)

**Important Comments:** This antibody is expected to recognize all reported isoforms (NP\_000255.2; NP\_001077072.1; NP\_001077071.1; NP\_001077073.1). Reported variants represent identical protein: NP\_001077075.1, NP\_001077074.1, NP\_001077073.1, NP\_001077076.1

### Immunogen

Peptide with sequence C-EELKKINYQVDSWEE, from the internal region of the protein sequence according to NP\_000255.2; NP\_001077072.1; NP\_001077071.1; NP\_001077073.1.

Please note the [peptide](#) is available for sale.

### Purification and Storage

Purified from goat serum by ammonium sulphate precipitation followed by antigen affinity chromatography using the immunizing peptide.

Supplied at 0.5 mg/ml in Tris saline, 0.02% sodium azide, pH7.3 with 0.5% bovine serum albumin.

Aliquot and store at -20°C. Minimize freezing and thawing.

### Applications Tested

**Peptide ELISA:** antibody detection limit dilution 1:32000.

**Western blot:** Approx 140kDa band observed in Mouse fetal Kidney lysates (calculated MW of 159kDa according to NP\_032983.1). This molecular weight is routinely observed by other sources. Recommended concentration: 1-3µg/ml. Primary incubation was 1 hour.

**IHC:** Paraffin embedded Human Brain (Cortex). Recommended concentration: 8µg/ml.

**Immunofluorescence:** Strong expression of the protein seen in the cytoplasm of HeLa cells. Recommended concentration: 5µg/ml.

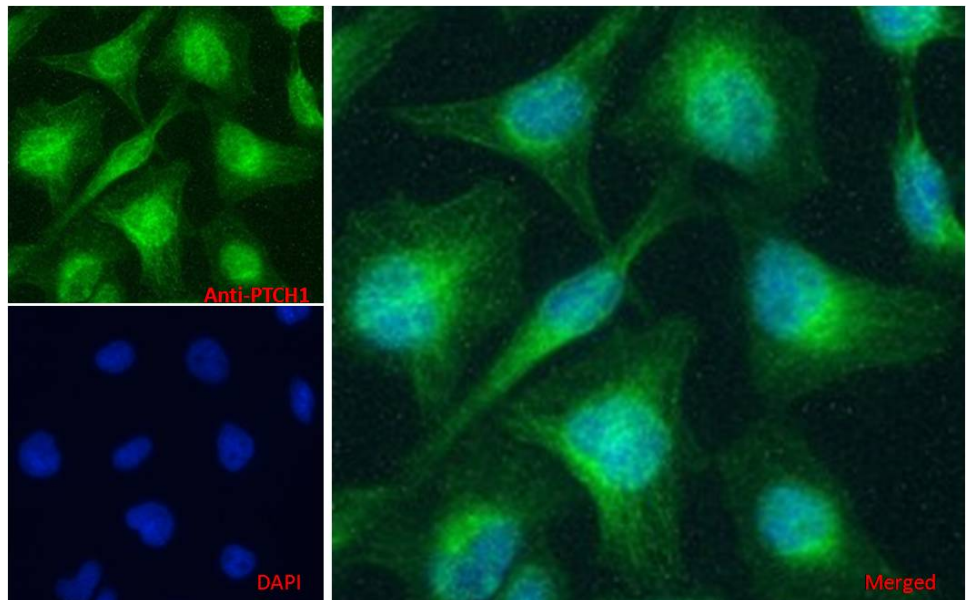
### Species Reactivity

**Tested:** Human, Mouse

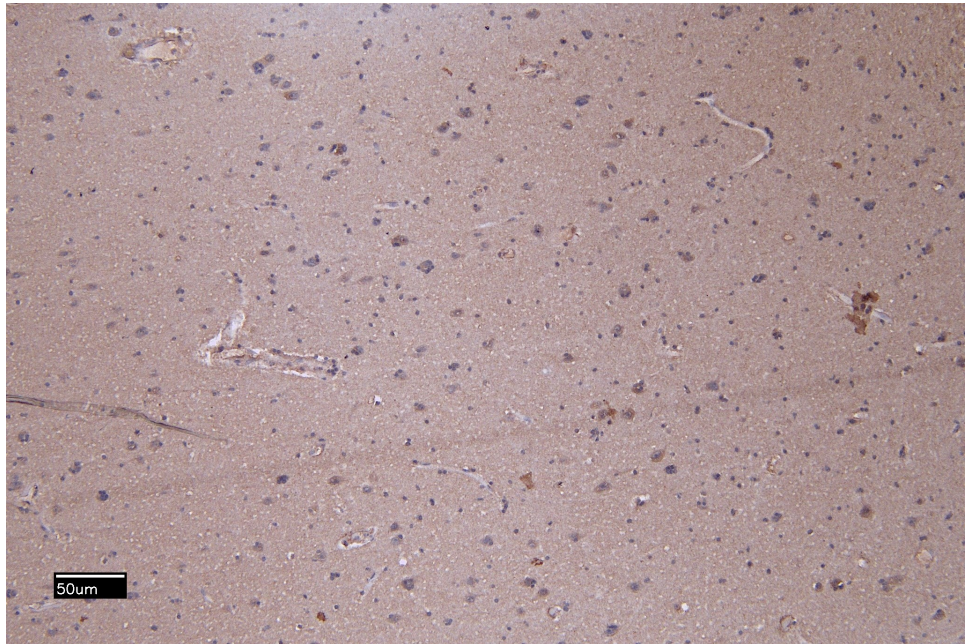
**Expected from sequence similarity:** Human, Mouse, Rat, Dog, Cow



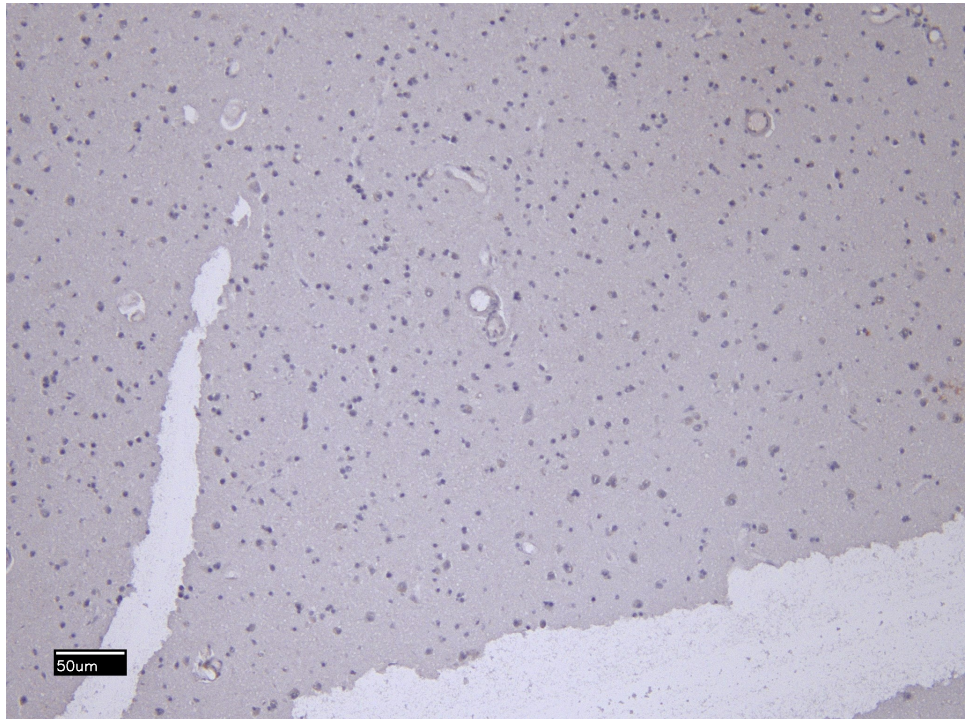
EB10888 (2 $\mu$ g/ml) staining of Mouse fetal Kidney lysate (35 $\mu$ g protein in RIPA buffer). Detected by chemiluminescence.



EB10888 Immunofluorescence analysis of paraformaldehyde fixed HeLa cells, permeabilized with 0.15% Triton. Primary incubation 1hr (5 $\mu$ g/ml) followed by Alexa Fluor 488 secondary antibody (1 $\mu$ g/ml), showing cytoplasmic and Golgi apparatus staining. The nuclear stain is DAPI (blue).



EB10888 (8µg/ml) staining of paraffin embedded Human Cortex. Heat induced antigen retrieval with citrate buffer pH 6, HRP-staining.



EB10888 Negative Control showing staining of paraffin embedded Human Cortex, with no primary antibody.