



International Office

Everest Biotech Ltd

Vector Laboratories, Inc.
6737 Mowry Ave
Newark, CA 94560
United States

Customer Service:

customerservice@vectorlabs.com

Technical Service:

technical@vectorlabs.com

Tel: +1 (800) 227-6666

www.everestbiotech.com

**Research Use Only. Not for
diagnostic or therapeutic use.**

EB06544 - Goat Anti-PTEN Antibody

Size: 100µg specific antibody in 200µl



Target Protein

Principal Names: PTEN, BZS, MHAM, TEP1, MMAC1, PTEN1, MGC11227, phosphatase and tensin homolog (mutated in multiple advanced cancers 1), tensin homolog, mutated in multiple advanced cancers 1, MMAC1 phosphatase and tension homolog deleted on chromosome 10

Official Symbol: PTEN

Accession Number(s): NP_000305.3

Human GeneID(s): [5728](#)

Immunogen

Peptide with sequence CNEPFDEQHTQIT, from the internal region (near the C Terminus) of the protein sequence according to NP_000305.3.

Please note the [peptide](#) is available for sale.

Purification and Storage

Purified from goat serum by ammonium sulphate precipitation followed by antigen affinity chromatography using the immunizing peptide.

Supplied at 0.5 mg/ml in Tris saline, 0.02% sodium azide, pH7.3 with 0.5% bovine serum albumin.

Aliquot and store at -20°C. Minimize freezing and thawing.

Applications Tested

Peptide ELISA: antibody detection limit dilution 1:32000.

Western blot: Approx 55kDa band observed in lysates of cell line A431 and 50kDa in lysates of cell line NIH3T3 (calculated MW of 47.1kDa according to Human NP_000305 and Mouse NP_032986.1). Recommended concentration: 1-3µg/ml.

Immunoprecipitation: This antibody was deemed fit for IP under native conditions (observations from a customer).

Additional validation: This antibody has been successfully used in the following paper: Sikorski et al. (2018) PMID: 30377371.

Species Reactivity

Tested: Human, Mouse

Expected from sequence similarity: Human, Mouse, Rat, Dog, Pig, Cow

Specific Reference

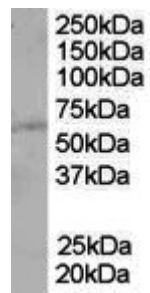
This antibody has been successfully used in the following paper:

Krzysztof Sikorski, Adi Mehta, Marit Inngjerdigen, Flourina Thakor, Simon Kling, Tomas Kalina, Tuula A. Nyman, Maria Ekman Stensland, Wei Zhou, Gustavo A. De Souza, Lars Holden, Jan Stuchly, Markus Templin and Fridtjof Lund-Johansen

A high-throughput pipeline for validation of antibodies

Nat Methods. 2018 Nov;15(11):909-912

PMID: 30377371



EB06544 (1µg/ml) staining of A431 lysate (35µg protein in RIPA buffer). Primary incubation was 1 hour.
Detected by chemiluminescence.