

UK Office

Everest Biotech Ltd

Cherwell Innovation Centre
77 Heyford Park
Upper Heyford
Oxfordshire
OX25 5HD
UK

Enquiries:

info@everestbiotech.com

Sales:

sales@everestbiotech.com

Tech support:

support@everestbiotech.com

Tel: +44 (0)1869 238326

www.everestbiotech.com

**Research Use Only. Not for
diagnostic or therapeutic use.**

EB12308 - Goat Anti-PTGDS Antibody

Size: 100µg specific antibody in 200µl



Target Protein

Principal Names: PTGDS, prostaglandin D2 synthase 21kDa (brain), L-PGDS, LPGDS, PDS, PGD2, PGDS, PGDS2, PGD2 synthase, beta-trace protein, cerebrin-28, glutathione-independent PGD synthase, glutathione-independent PGD synthetase, lipocalin-type prostaglandin D synthase, I

Official Symbol: PTGDS

Accession Number(s): NP_000945.3

Human GeneID(s): [5730](#)

Important Comments: The immunizing peptide represents the N terminus of the mature protein.

Immunogen

Peptide with sequence C-QVSVQPNFQQDK, from the internal region of the protein sequence according to NP_000945.3.

Please note the [peptide](#) is available for sale.

Purification and Storage

Purified from goat serum by ammonium sulphate precipitation followed by antigen affinity chromatography using the immunizing peptide.

Supplied at 0.5 mg/ml in Tris saline, 0.02% sodium azide, pH7.3 with 0.5% bovine serum albumin.

Aliquot and store at -20°C. Minimize freezing and thawing.

Applications Tested

Peptide ELISA: antibody detection limit dilution 1:128000.

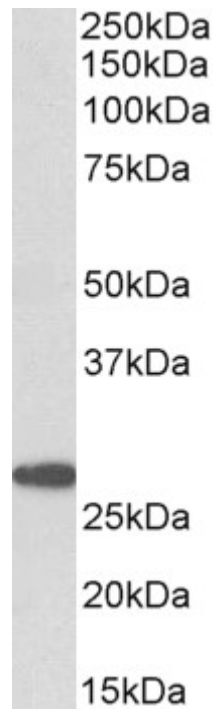
Western blot: Approx 27kDa band observed in Human Brain (Cerebellum, Frontal Cortex) lysates (calculated MW of 21.0kDa according to NP_000945.3). The observed molecular weight corresponds to the glycosylated form. Recommended concentration: 0.3-1µg/ml.

IHC: Paraffin embedded Human Brain (Cortex). Recommended concentration: 5µg/ml.

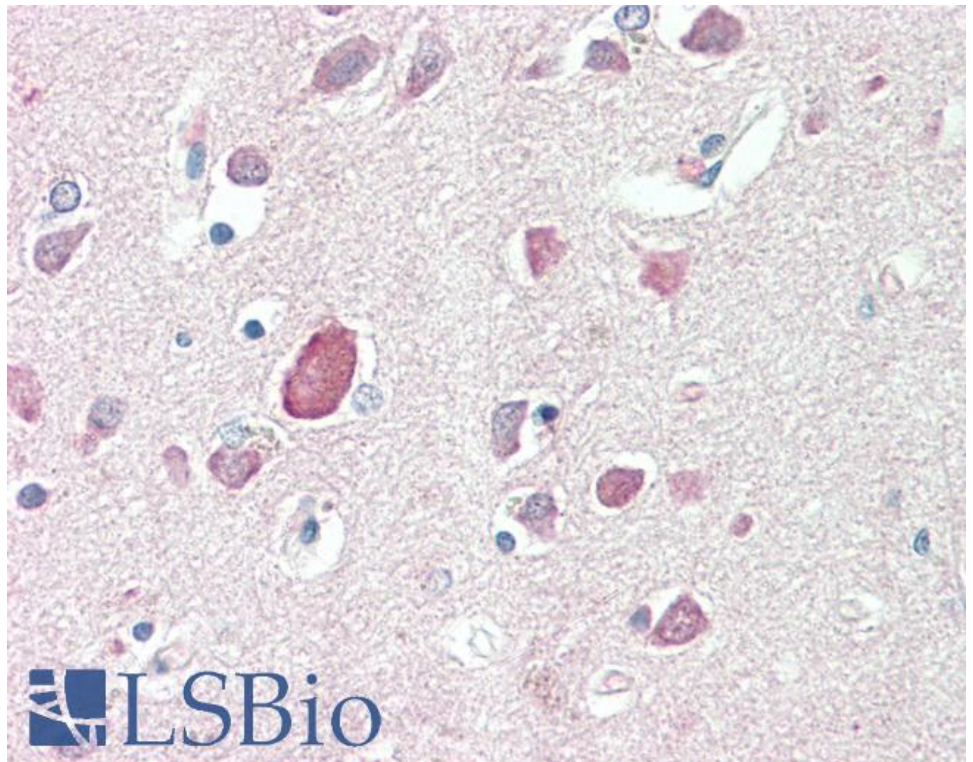
Species Reactivity

Tested: Human

Expected from sequence similarity: Human



EB12308 (0.3 μ g/ml) staining of Human Cerebellum lysate (35 μ g protein in RIPA buffer). Primary incubation was 1 hour. Detected by chemiluminescence.



EB12308 (5 μ g/ml) staining of paraffin embedded Human Cortex. Steamed antigen retrieval with citrate buffer pH 6, AP-staining.