

## UK Office

### Everest Biotech Ltd

Cherwell Innovation Centre  
77 Heyford Park  
Upper Heyford  
Oxfordshire  
OX25 5HD  
UK

Enquiries:

[info@everestbiotech.com](mailto:info@everestbiotech.com)

Sales:

[sales@everestbiotech.com](mailto:sales@everestbiotech.com)

Tech support:

[support@everestbiotech.com](mailto:support@everestbiotech.com)

Tel: +44 (0)1869 238326

[www.everestbiotech.com](http://www.everestbiotech.com)

**Research Use Only. Not for  
diagnostic or therapeutic use.**

## EB08205 - Goat Anti-PTGER3 / EP3 Antibody

Size: 100µg specific antibody in 200µl



### Target Protein

**Principal Names:** PTGER3, EP3, prostaglandin E receptor 3 (subtype EP3), EP3-I, EP3-II, EP3-III, EP3-IV, EP3e, MGC141828, MGC141829, MGC27302, PGE receptor, EP3 subtype, prostaglandin E receptor 3, subtype EP3, prostaglandin E2 receptor, prostaglandin receptor (PGE-2), pr

**Official Symbol:** PTGER3

**Accession Number(s):** NP\_000948.2; NP\_942005.2; NP\_942006.1

**Human GeneID(s):** [5733](#)

**Important Comments:** This antibody is expected to recognize isoforms 1, 2 and 3 (NP\_000948.2, NP\_942005.2 and NP\_942006.1).

### Immunogen

Peptide with sequence KLLREPCSVQLS, from the C Terminus of the protein sequence according to NP\_000948.2; NP\_942005.2; NP\_942006.1.

Please note the [peptide](#) is available for sale.

### Purification and Storage

Purified from goat serum by ammonium sulphate precipitation followed by antigen affinity chromatography using the immunizing peptide.

Supplied at 0.5 mg/ml in Tris saline, 0.02% sodium azide, pH7.3 with 0.5% bovine serum albumin.

Aliquot and store at -20°C. Minimize freezing and thawing.

### Applications Tested

**Peptide ELISA:** antibody detection limit dilution 1:2000.

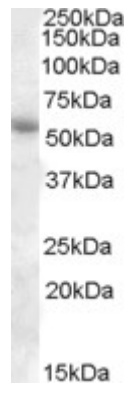
**Western blot:** Approx 55kDa band observed in Human Adipose, Kidney, Pancreas and Placenta lysates (calculated MW of 47.3kDa according to NP\_000948.2). The observed molecular weight corresponds to earlier findings in literature with different antibodies (Sung et al, , Cancer Res. 2005 Oct 15;65(20):9304-11; PMID: 16230392).

Recommended concentration: 1-3µg/ml.

### Species Reactivity

**Tested:** Human

**Expected from sequence similarity:** Human



EB08205 (1µg/ml) staining of Human Adipose lysate (35µg protein in RIPA buffer). Primary incubation was 1 hour. Detected by chemiluminescence.