



UK Office

Everest Biotech Ltd

Cherwell Innovation Centre
77 Heyford Park
Upper Heyford
Oxfordshire
OX25 5HD
UK

Enquiries:

info@everestbiotech.com

Sales:

sales@everestbiotech.com

Tech support:

support@everestbiotech.com

Tel: +44 (0)1869 238326

www.everestbiotech.com

**Research Use Only. Not for
diagnostic or therapeutic use.**

EB12928 - Goat Anti-PTGES2 (aa292-306) Antibody

Size: 100µg specific antibody in 200µl



Target Protein

Principal Names: PTGES2, prostaglandin E synthase 2, C9orf15, GBF-1, GBF1, PGES2, mPGES-2, GATE-binding factor 1, gamma-interferon-activated transcriptional element-binding factor 1, membrane-associated prostaglandin E synthase 2, microsomal prostaglandin E synthase-2

Official Symbol: PTGES2

Accession Number(s): NP_079348.1; NP_945176.1

Human GeneID(s): [80142](#)

Important Comments: This antibody is expected to recognize both reported isoforms (NP_079348.1; NP_945176.1). Reported variants represent identical protein: NP_001243264.1, NP_945176.1.

Immunogen

Peptide with sequence C-RLKSRHRLQDNVRED, from the internal region of the protein sequence according to NP_079348.1; NP_945176.1.

Please note the [peptide](#) is available for sale.

Purification and Storage

Purified from goat serum by ammonium sulphate precipitation followed by antigen affinity chromatography using the immunizing peptide.

Supplied at 0.5 mg/ml in Tris saline, 0.02% sodium azide, pH7.3 with 0.5% bovine serum albumin.

Aliquot and store at -20°C. Minimize freezing and thawing.

Applications Tested

Peptide ELISA: antibody detection limit dilution 1:128000.

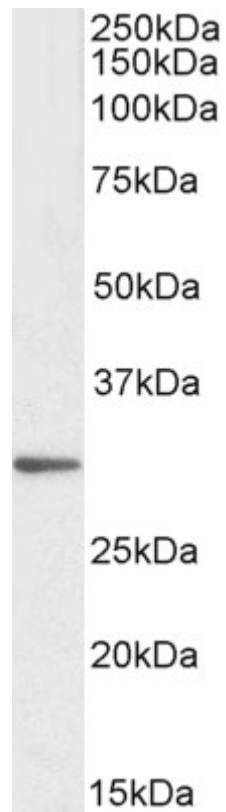
Western blot: Approx 30kDa band observed in lysates of cell line HeLa (calculated MW of 41.9kDa according to NP_079348.1). This molecular weight is routinely observed by other sources. Recommended concentration: 1-3µg/ml.

IHC: Paraffin embedded Human Brain (Cortex) and Heart. Recommended concentration: 5µg/ml.

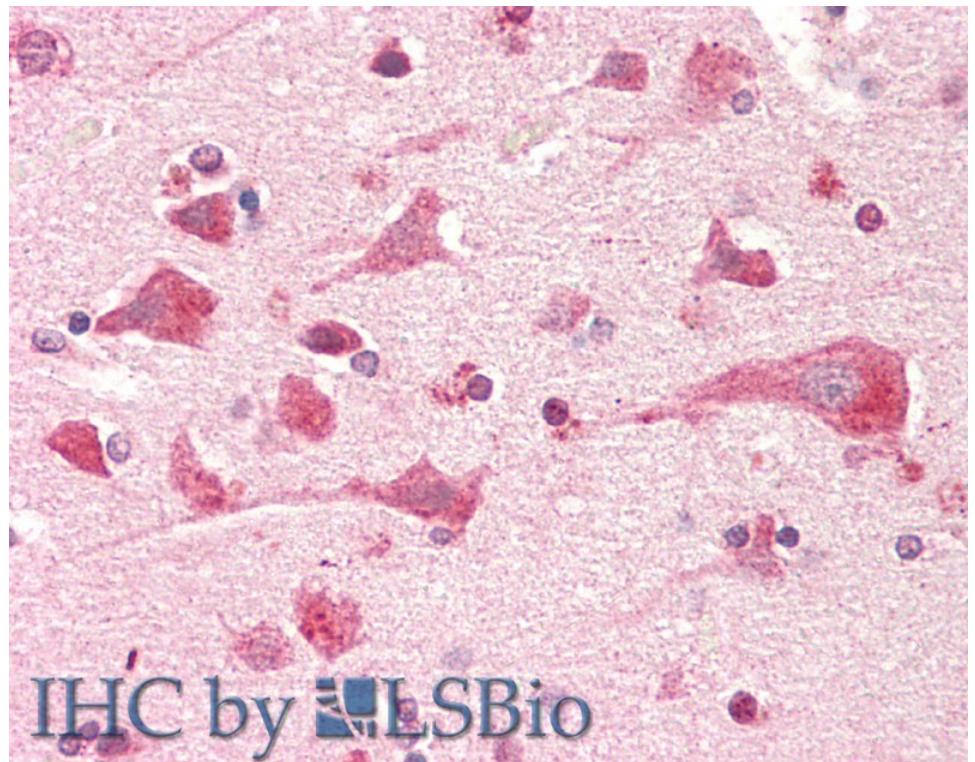
Species Reactivity

Tested: Human

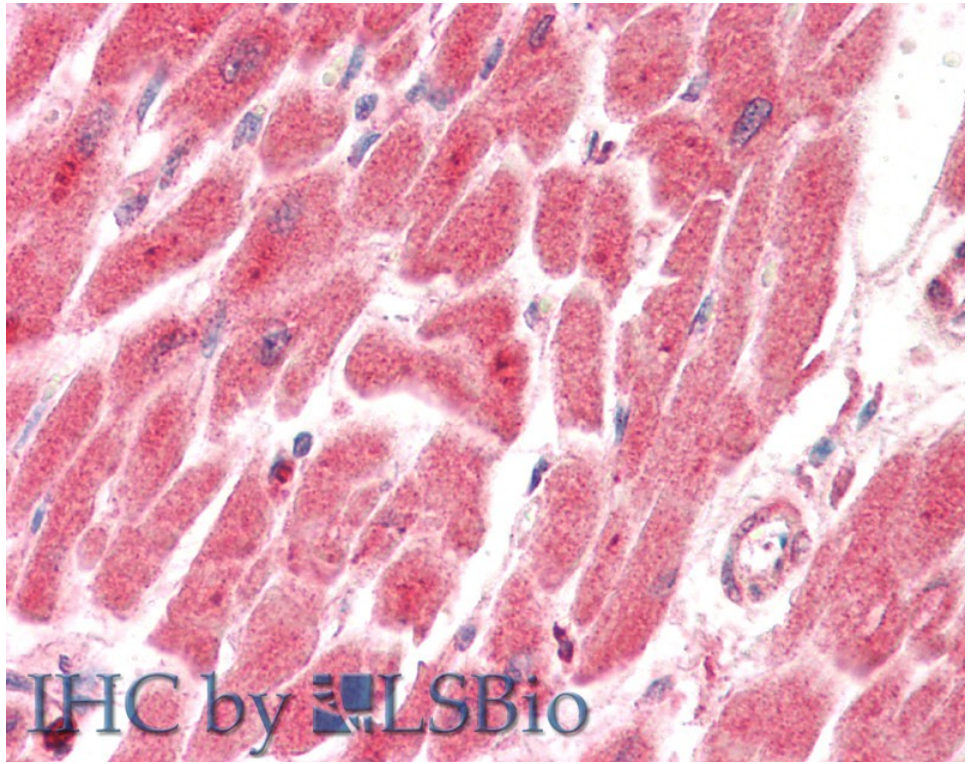
Expected from sequence similarity: Human



EB12989 (1 μ g/ml) staining of HeLa lysate (35 μ g protein in RIPA buffer). Primary incubation was 1 hour. Detected by chemiluminescence.



EB12928 (5 μ g/ml) staining of paraffin embedded Human Cortex. Steamed antigen retrieval with citrate buffer pH 6, AP-staining.



EB12928 (5µg/ml) staining of paraffin embedded Human Heart. Steamed antigen retrieval with citrate buffer pH 6, AP-staining.