



## UK Office

### Everest Biotech Ltd

Cherwell Innovation Centre  
77 Heyford Park  
Upper Heyford  
Oxfordshire  
OX25 5HD  
UK

Enquiries:

[info@everestbiotech.com](mailto:info@everestbiotech.com)

Sales:

[sales@everestbiotech.com](mailto:sales@everestbiotech.com)

Tech support:

[support@everestbiotech.com](mailto:support@everestbiotech.com)

Tel: +44 (0)1869 238326

[www.everestbiotech.com](http://www.everestbiotech.com)

**Research Use Only. Not for  
diagnostic or therapeutic use.**

## EB12919 - Goat Anti-PTGIS / CYP8A1 (aa248-258) Antibody

Size: 100µg specific antibody in 200µl



### Target Protein

**Principal Names:** PTGIS, prostaglandin I2 (prostacyclin) synthase, CYP8, CYP8A1, PGIS, PTGI, cytochrome P450, family 8, subfamily A, polypeptide 1, prostacyclin synthase, prostaglandin I2 synthase

**Official Symbol:** PTGIS

**Accession Number(s):** NP\_000952.1

**Human GeneID(s):** [5740](#)

### Immunogen

Peptide with sequence C-RRAHRSKWLES, from the internal region of the protein sequence according to NP\_000952.1.

Please note the [peptide](#) is available for sale.

### Purification and Storage

Purified from goat serum by ammonium sulphate precipitation followed by antigen affinity chromatography using the immunizing peptide.

Supplied at 0.5 mg/ml in Tris saline, 0.02% sodium azide, pH7.3 with 0.5% bovine serum albumin.

Aliquot and store at -20°C. Minimize freezing and thawing.

### Applications Tested

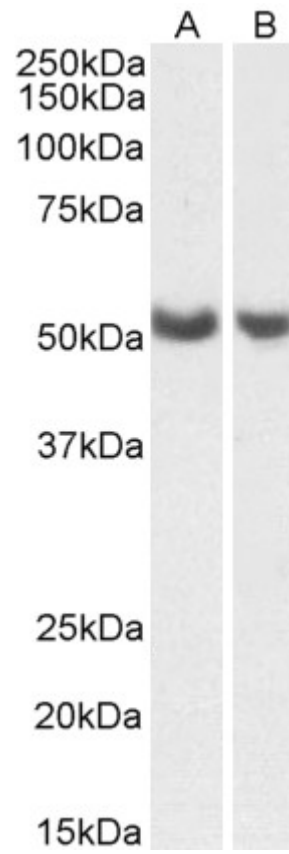
**Peptide ELISA:** antibody detection limit dilution 1:128000.

**Western blot:** Approx 55kDa band observed in Human Lung and Human Ovary lysates (calculated MW of 57.1kDa according to NP\_000952.1). Recommended concentration: 0.5-1.5µg/ml.

### Species Reactivity

**Tested:** Human

**Expected from sequence similarity:** Human, Pig



EB12919 (0.5 $\mu$ g/ml) staining of Human Lung (A) and Ovary (B) lysates (35 $\mu$ g protein in RIPA buffer). Primary incubation was 1 hour. Detected by chemiluminescence.