

## UK Office

### Everest Biotech Ltd

Cherwell Innovation Centre  
77 Heyford Park  
Upper Heyford  
Oxfordshire  
OX25 5HD  
UK

Enquiries:

[info@everestbiotech.com](mailto:info@everestbiotech.com)

Sales:

[sales@everestbiotech.com](mailto:sales@everestbiotech.com)

Tech support:

[support@everestbiotech.com](mailto:support@everestbiotech.com)

Tel: +44 (0)1869 238326

Fax: +44 (0)1869 238327

## US Office

### Everest Biotech c/o Abcore

405 Maple Street, Suite A106  
Ramona,  
CA 92065  
USA

Inquiries:

[info@everestbiotech.com](mailto:info@everestbiotech.com)

Sales:

[usasales@everestbiotech.com](mailto:usasales@everestbiotech.com)

Tech support:

[support@everestbiotech.com](mailto:support@everestbiotech.com)

Tel: 888-320-4628 (toll-free)

Fax: 888-841-9041

[www.everestbiotech.com](http://www.everestbiotech.com)

**Research Use Only. Not for  
diagnostic or therapeutic use.**

## EB07725-T - Goat Anti-PTPN6 / SHP1 (internal region) Antibody - Trial

Size: 20µg specific antibody in 40µl



### Target Protein

**Principal Names:** PTPN6, SHP1, protein tyrosine phosphatase, non-receptor type 6, HCP, HCPH, HPTP1C, PTP-1C, SH-PTP1, SHP-1, SHP-1L, 70 kda SHP-1L protein, hematopoietic cell phosphatase, hematopoietic cell protein-tyrosine phosphatase, protein-tyrosine phosphatase 1C

**Official Symbol:** PTPN6

**Accession Number(s):** NP\_536858.1; NP\_002822.2

**Human GeneID(s):** [5777](#)

**Non-Human GeneID(s):** 15170 (mouse), 116689 (rat)

**Important Comments:** This antibody is expected to recognise both reported isoforms (NP\_536858.1 and NP\_002822.2). Please note this antibody was designed using the mouse sequence, which differs by 1 amino acid from the human sequence.

### Immunogen

Peptide with sequence C-KASRTSSKHKEE, from the internal region of the protein sequence according to NP\_536858.1; NP\_002822.2.

Please note the [peptide](#) is available for sale.

### Purification and Storage

Purified from goat serum by ammonium sulphate precipitation followed by antigen affinity chromatography using the immunizing peptide.

Supplied at 0.5 mg/ml in Tris saline, 0.02% sodium azide, pH7.3 with 0.5% bovine serum albumin.

Aliquot and store at -20°C. Minimize freezing and thawing.

### Applications Tested

**Peptide ELISA:** antibody detection limit dilution 1:128000.

**Western blot:** Approx 70kDa band observed in Human Liver and Mouse Thymus lysates and approx 70-75kDa in Rat Thymus lysates (calculated MW of 67.6kDa according to Human NP\_536858.1 and Mouse NP\_038573.2, and 69.6kDa according to Rat NP\_446360.1). Recommended concentration: 0.01-0.1µg/ml. Primary incubation 1 hour at room temperature.

**IHC:** Paraffin embedded Human Thyroid. Recommended concentration: 5µg/ml.

### Species Reactivity

**Tested:** Human, Mouse, Rat

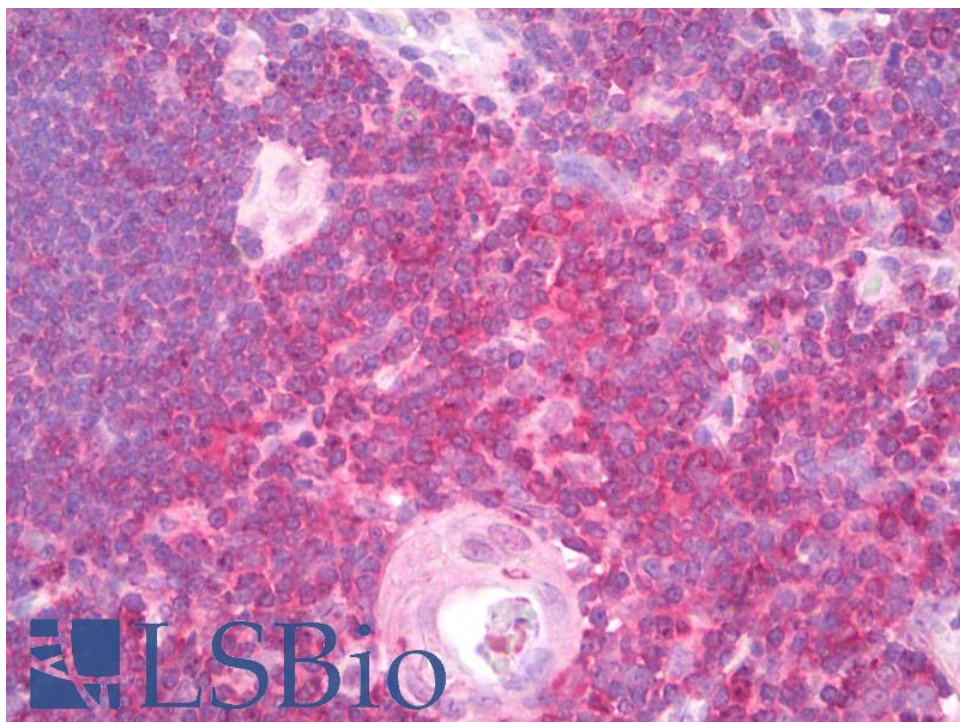
**Expected from sequence similarity:** Human, Mouse, Rat, Dog



EB07725 (0.1 $\mu$ g/ml) staining of Human Liver lysate (35 $\mu$ g protein in RIPA buffer). Detected by chemiluminescence.



EB07725 (0.01 $\mu$ g/ml) staining of Mouse Thymus (A) and (0.1 $\mu$ g/ml) Rat Thymus (B) lysate (35 $\mu$ g protein in RIPA buffer). Detected by chemiluminescence.



EB07725 (5µg/ml) staining of paraffin embedded Human Thyroid. Steamed antigen retrieval with citrate buffer pH 6, AP-staining.